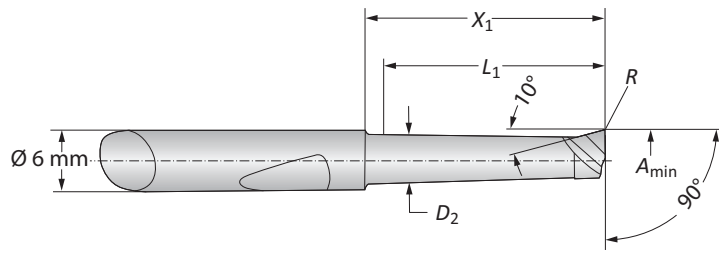


Mini Boring Bars

WHC05 | WHW04 | WBN150 | Diameter Range: 3.00 mm - 6.00 mm

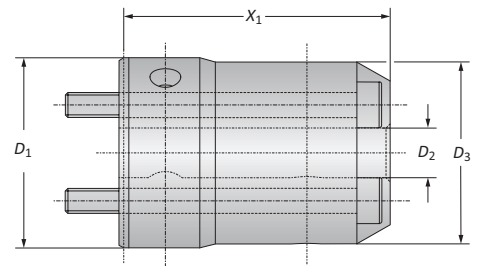


Mini Boring Bars

Boring Range	Boring Bar					Part No.		
	A_{min}	D_1	D_2	X_1	L_1	R	Coated Carbide	Uncoated Carbide
3.00	6.00	2.60	11.50	10.00	0.10	081306WHC05	–	081322WBN150
3.00	6.00	2.60	16.50	15.00	0.10	081307WHC05	081307WHW04	–
4.00	6.00	3.60	12.00	10.00	0.20	081308WHC05	–	081317WBN150
4.00	6.00	3.60	17.00	15.00	0.20	081309WHC05	–	081341WBN150
4.00	6.00	3.60	22.00	20.00	0.20	081310WHC05	081310WHW04	–
5.00	6.00	4.60	12.00	10.00	0.20	081311WHC05	–	081318WBN150
5.00	6.00	4.60	22.00	20.00	0.20	081312WHC05	–	081319WBN150
5.00	6.00	4.60	32.00	30.00	0.20	081313WHC05	081313WHW04	–
6.00	6.00	5.60	22.00	20.00	0.20	081314WHC05	–	081320WBN150
6.00	6.00	5.60	32.00	30.00	0.20	081315WHC05	–	081321WBN150
6.00	6.00	5.60	42.00	40.00	0.20	081316WHC05	081316WHW04	–

Adapter

Boring Head	Adapter				Part No.
	X_1	D_1	D_2	D_3	
248003	32.00	23.00	6.00	22.00	248071



B10-M: 12-13
Key on B10-A: 1

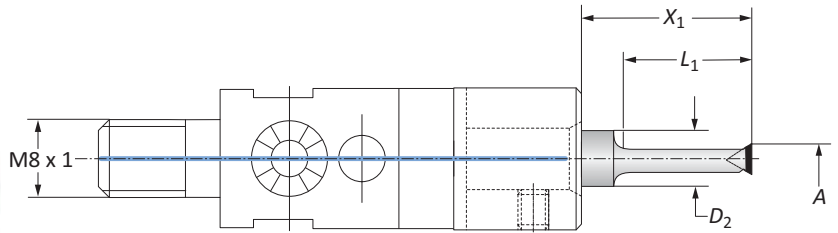
B10-A: 34

B10: VI-VII

 = Metric (mm)

Boring Bars

Diameter Range: 3.70 mm - 16.00 mm



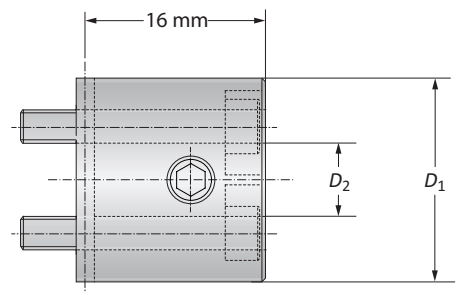
Boring Bars

Boring Range	Boring Bar				Insert Form	Part No.
	A	D ₂	X ₁	L ₁		
Ⓜ	3.70 - 5.00	8.00	20.80	18.00	325*	218074
	4.90 - 6.00	8.00	26.00	23.00	47*	218075
	5.90 - 8.00	8.00	27.00	25.00	211*	218076
	7.90 - 10.00	8.00	30.50	30.00	211*	218077
	9.90 - 12.00	8.00	35.00	35.00	20*	218079
	9.90 - 12.00	8.00	35.00	35.00	101	218082
	11.90 - 14.00	10.00	45.00	45.00	20*	218080
	11.90 - 14.00	10.00	45.00	45.00	101	218083
13.90 - 16.00	10.00	50.00	50.00	20*	218081	
13.90 - 16.00	10.00	50.00	50.00	101	218084	

*Not suitable for indexable inserts with a radius of 0.80 mm

Adapters

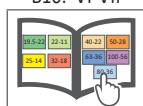
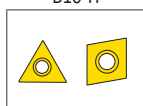
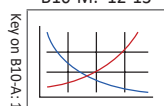
Boring Head	Adapter		Part No.
	D ₁	D ₂	
248002	18.00	8.00	248063
248003	23.00	8.00	248064
248003	23.00	10.00	248065



B10-M: 12-13

B10-H

B10: VI-VII



Ⓜ = Metric (mm)
Inserts sold separately