

Modulare Aggregatetechnik

Citizen

WF
&

Werkzeugtechnik
for professionals

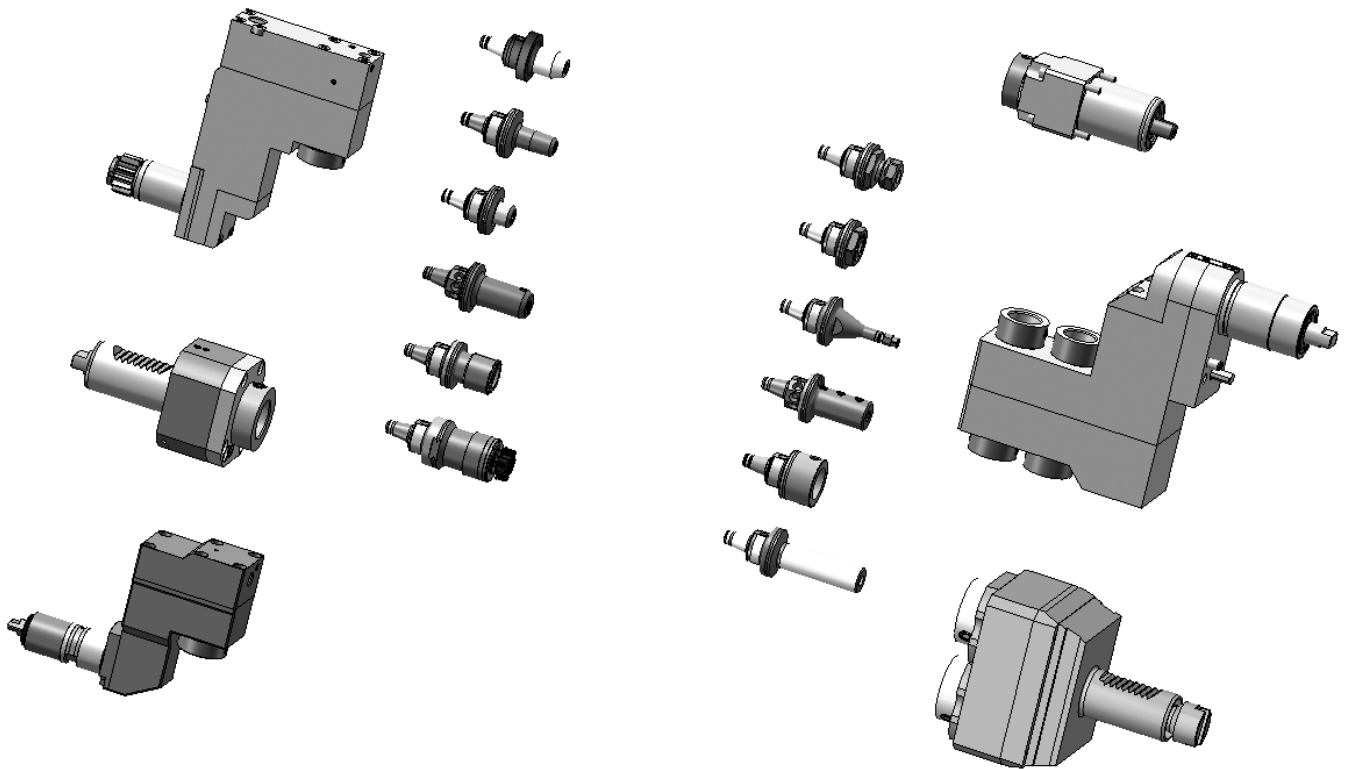


**Katalog
CI-02**



WFB-Adapterpool

Indications for the customer



Mit den Werkzeughaltern von W&F in statischer oder angetriebener Ausführung und dem WFB-Adaptersystem haben Sie die einzigartige Möglichkeit, für sämtliche Hersteller egal ob im Kurzdrehen, Langdrehen oder Mehrspindeldrehen ein durchgängiges modulares Werkzeugsystem einzusetzen.

The W&F tool holders are in static or driven performance and beyond that, the WFB-adapter system offers you an unique option to use it for every machine manufacturer whether you are manufacturer producing with swiss type lathes, standard turning machines or multispindle turning machines, WFB is suitable.

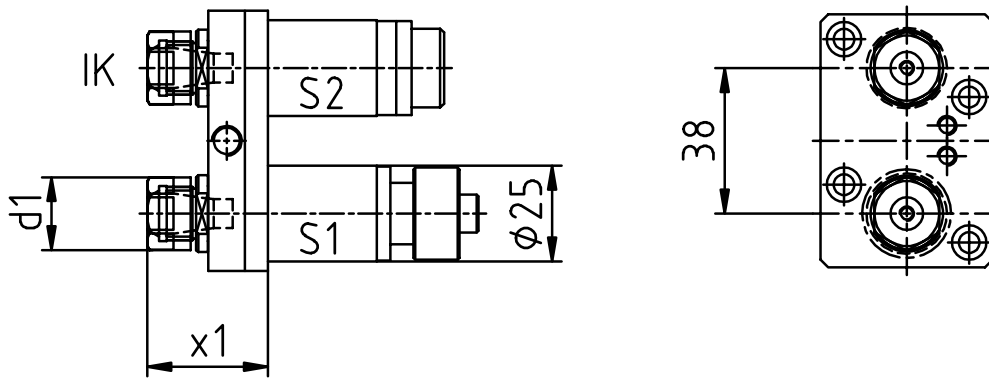
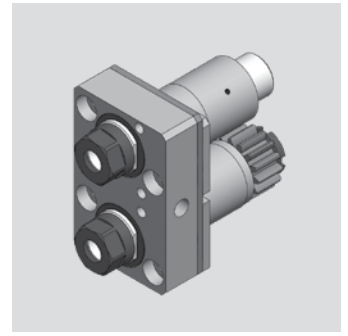
Citizen

Axial-Bohr- und Fräskopf

Axial drilling and milling head

Outil de perçage et de fraisage axiale

WG 35

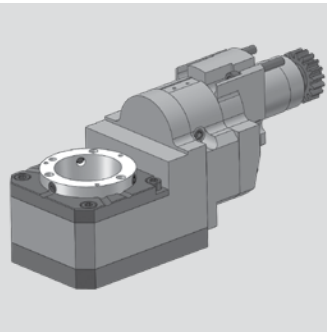


[mm]	[mm]	Spindle Broche Spindel	[Nm] T max	[rpm] n max	i	Outside cooling Lubrificat. ext. Aussenkühlung	Internal cooling Lubrificat. cent. Innenkühlung	[bar] p	Order no. N° de Code Bestellnummer
19	36,5	ER11	4*	6.000*	1:1*	x			MPU.Z25.E11.MA0.A20
19	36,5	ER11	4*	6.000*	1:1*	x	x	80	MPU.Z25.E11.ME0.A20

Passend für Maschine: A20
 suitable machines:
 approprié pour la machine:

Ähnlich OEM Nr.
 similar to OEM no.
 semblable au OEM nombre

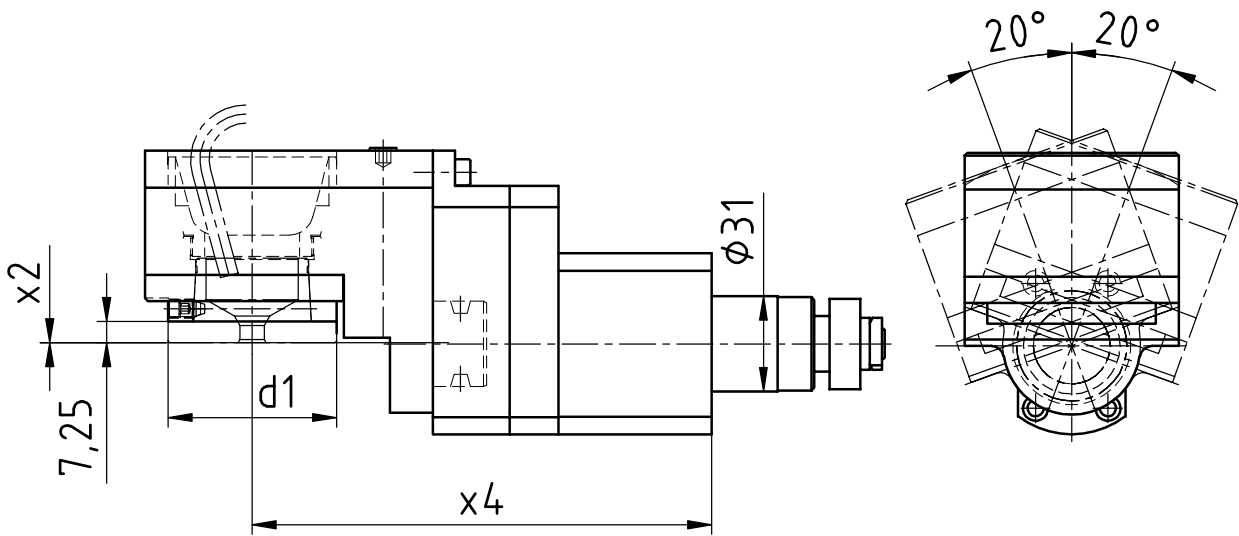
* S1: 4 Nm/6.000 rpm/i=1:1
 S2: 2 Nm/9.660 rpm/i=1:1,61



Citizen

Gewindewirbelapparat modular
 Thread whirling unit
 Unité de tourbillonnement

WG 35



[mm]	[mm]	[mm]	Spindle Broche Spindel	[Nm] T max	[rpm] n max		Outside cooling Lubrificat. ext. Aussenkühlung	Internal cooling Lubrificat. cent. Innenkühlung	[bar] p	Order no. N° de Code Bestellnummer
d1	x2	x4			i					
54	0	150	WFW 50	16	6.000	1:1				MPU.LSW.101.M0800.A20

Passend für Maschine: A20
 suitable machines:
 approprié pour la machine:

Ähnlich OEM Nr.
 similar to OEM no.
 semblable au OEM nombre

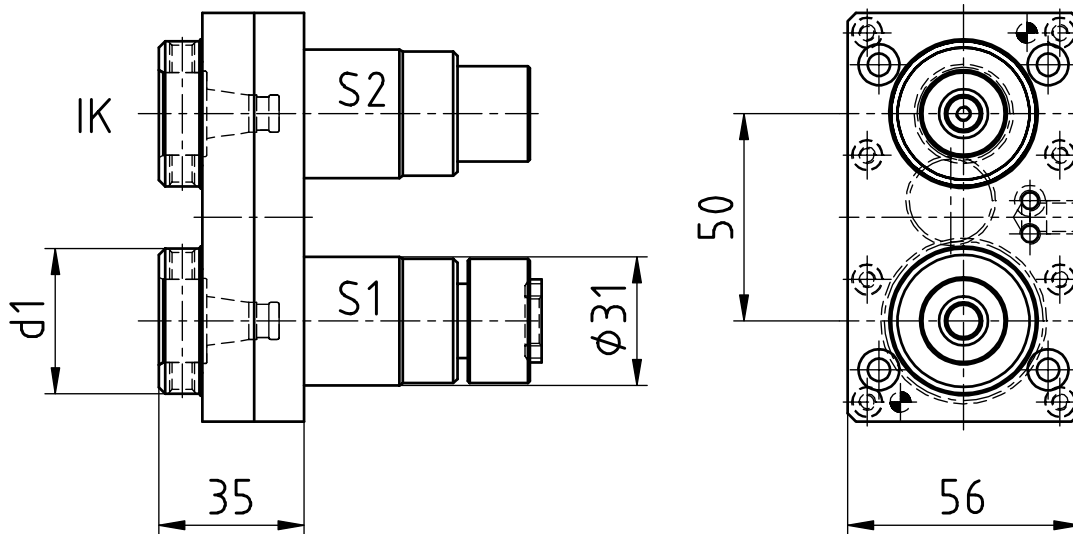
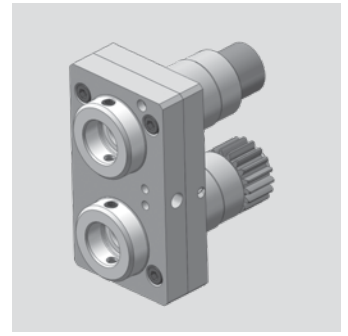
Citizen

Axial-Bohr- und Fräskopf

Axial drilling and milling head

Outil de perçage et de fraisage axiale

WG 35



[mm]	[mm]	Spindle Broche Spindel	[Nm] T max	[rpm] n max		Outside cooling Lubrificat. ext. Aussenkühlung	Internal cooling Lubrificat. cent. Innenkühlung	[bar] p	Order no. N° de Code Bestellnummer
d1	x1			i					
35	35	WFB 20-12	6*	6.000*	1:1*	x			MPU.Z31.B20.MA0.A32
35	35	WFB 20-12	6*	6.000*	1:1*	x	x	80	MPU.Z31.B20.ME0.A32

Passend für Maschine: A32
 suitable machines:
 approprié pour la machine:

Ähnlich OEM Nr.
 similar to OEM no.
 semblable au OEM nombre

* S1: 6 Nm/6.000 rpm/i=1:1
 S2: 3 Nm/10.260 rpm/i=1:1,71



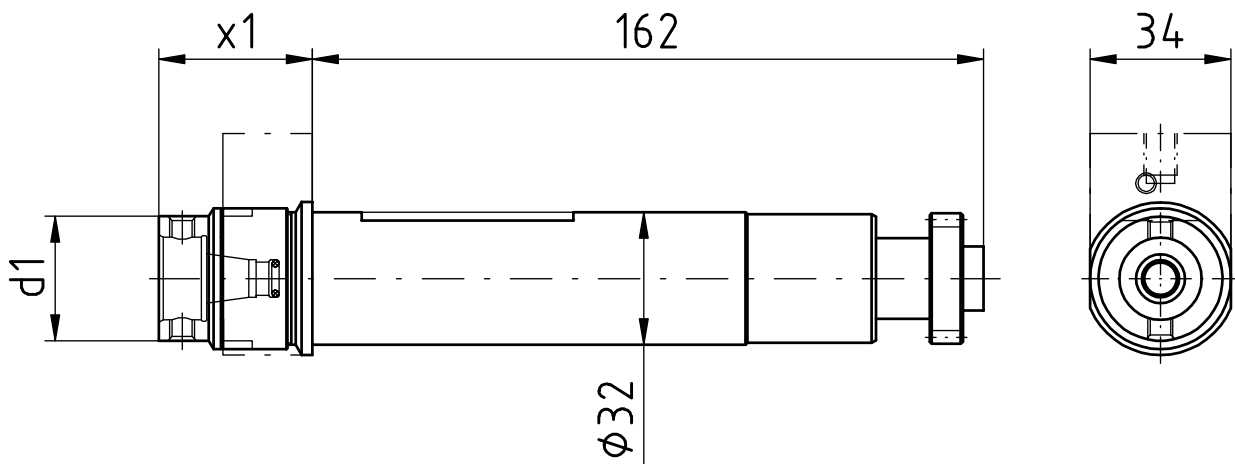
Citizen

Axial-Bohr- und Fräskopf

Axial drilling and milling head

Outil de perçage et de fraisage axiale

WG 35



[mm]	[mm]	Spindle Broche Spindel	[Nm] T max	[rpm] n max	i	Outside cooling Lubrificat. ext. Aussenkühlung	Internal cooling Lubrificat. cent. Innenkühlung	[bar] p	Order no. N° de Code Bestellnummer
d1	x1								
30	37	WFB 20-12	10	6.000	1:1				MPU.GSC.507.AA0.B20
30	37	WFB 20-12	10	6.000	1:1	x	x	80	MPU.GSC.507.AE0.B20

Passend für Maschine:	L20E2M8	L20E-IX	L20X	M232-III	M332-III
suitable machines:	L20E2M10	L20V	M220-III	M320-III	M332-V
approprié pour la machine:	L20E1M12	L20VIII	M220-V	M320-V	M32-4M5/M8

Ähnlich OEM Nr.	GSC-1010
similar to OEM no.	
semblable au OEM nombre	

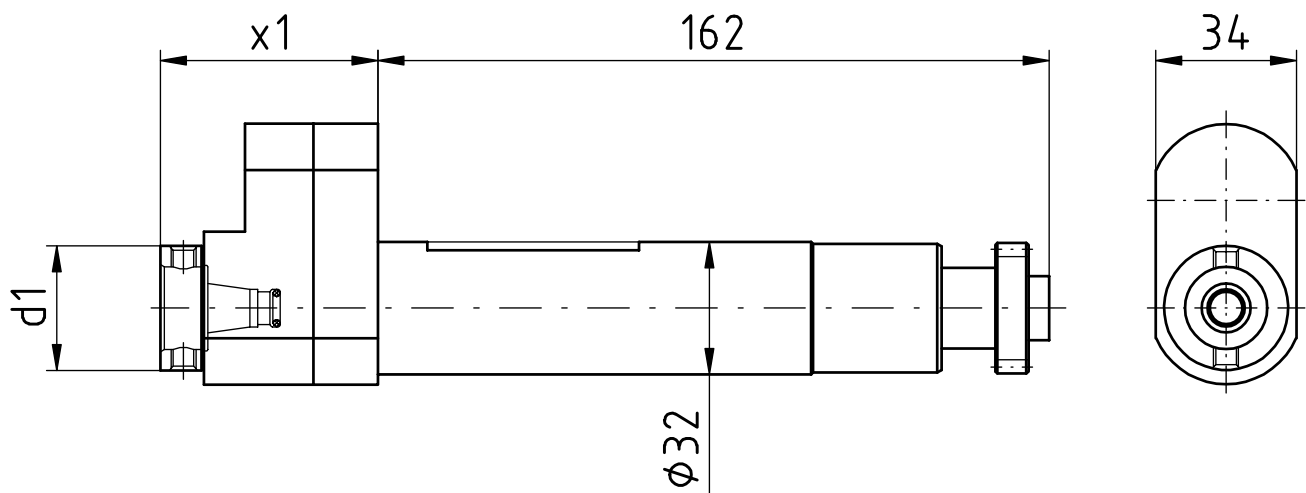
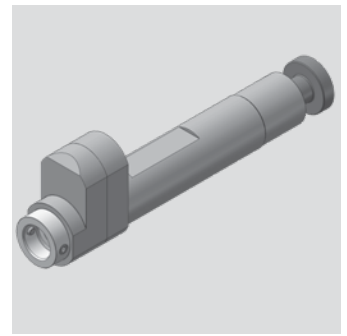
Citizen

Axial-Bohr- und Fräskopf

Axial drilling and milling head

Outil de perçage et de fraisage axiale

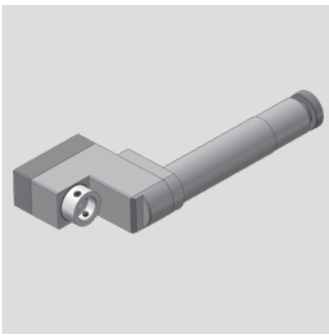
WG 35



[mm]	[mm]	Spindle Broche Spindel	[Nm] T max	[rpm] n max	i	Outside cooling Lubrificat. ext. Aussenkühlung	Internal cooling Lubrificat. cent. Innenkühlung	[bar] p	Order no. N° de Code Bestellnummer
d1	x1								
30	52,5	WFB 20-12	3	18.000	1:3				MPU.GSC.510.AA0.B20

Passend für Maschine:	L20E2M8	L20E-IX	L20X	M232-III	M332-III
suitable machines:	L20E2M10	L20V	M220-III	M320-III	M332-V
approprié pour la machine:	L20E1M12	L20VIII	M220-V	M320-V	M32-4M5/M8

Ähnlich OEM Nr.	GSC-1010
similar to OEM no.	
semblable au OEM nombre	



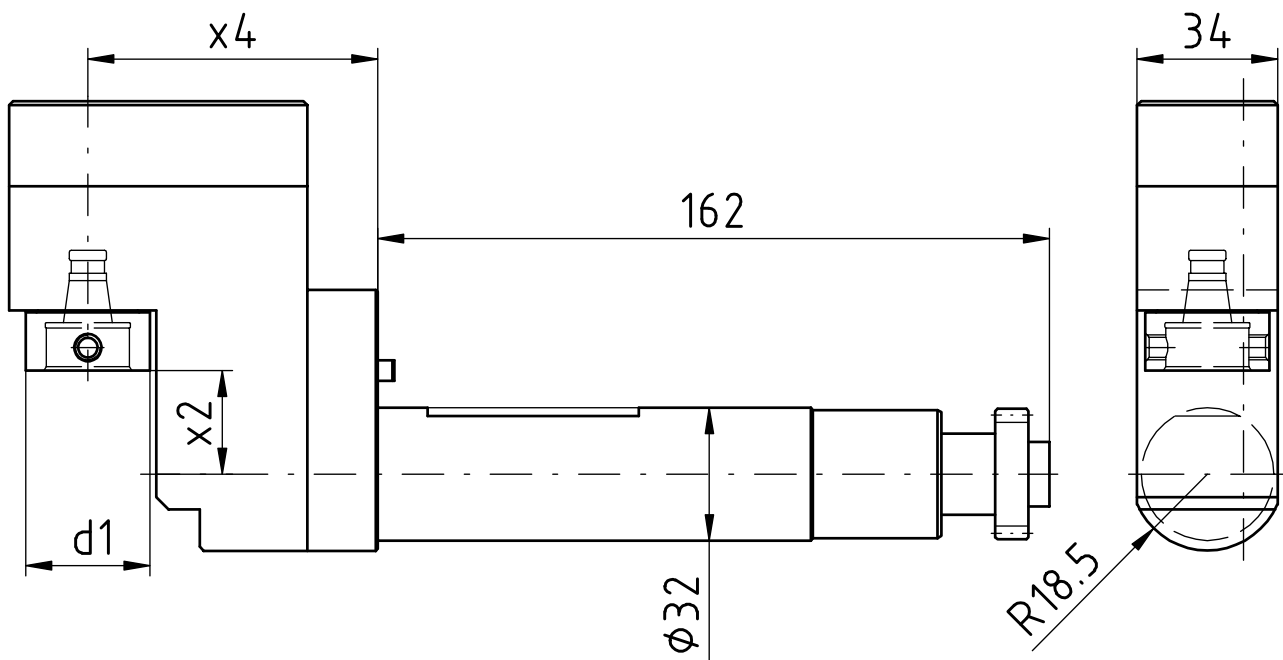
Citizen

Radial-Bohr- und Fräskopf

Radial drilling and milling head

Outil de perçage et de fraisage radiale

WG 35



[mm]	[mm]	[mm]	Spindle Broche Spindel	[Nm] T max	[rpm] n max i	Outside cooling Lubrificat. ext. Aussenkühlung	Internal cooling Lubrificat. cent. Innenkühlung	[bar] p	Order no. N° de Code Bestellnummer
d1	x2	x4	WFB 20-12	4	12.000	1:2			MPU.GSE.607.XA0.B20

Passend für Maschine: suitable machines: approprié pour la machine:	L20E2M8	L20E-IX	L20X	M232-III	M332-III
	L20E2M10	L20V	M220-III	M320-III	M332-V
	L20E1M12	L20VIII	M220-V	M320-V	M32-4M5/M8

Ähnlich OEM Nr. similar to OEM no. semblable au OEM nombre	GSE-306

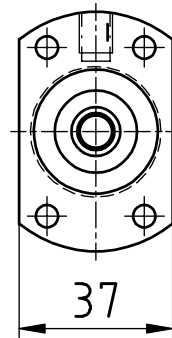
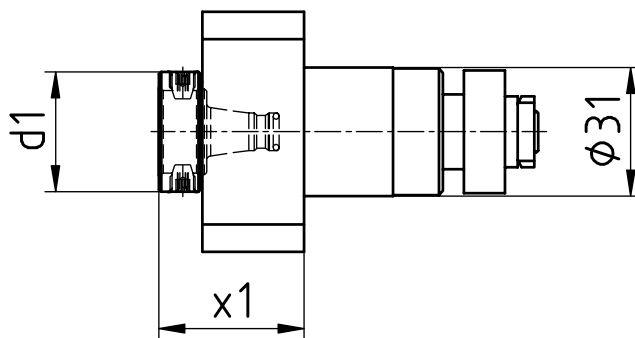
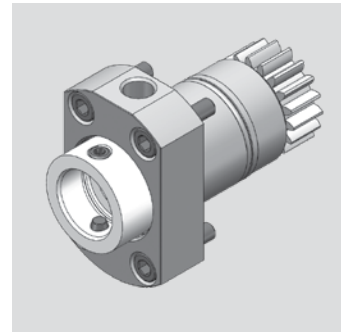
Citizen

Axial-Bohr- und Fräskopf

Axial drilling and milling head

Outil de perçage et de fraisage axiale

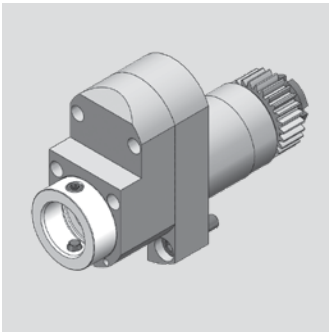
WG 35



[mm]	[mm]	Spindle Broche Spindel	[Nm] T max	[rpm] n max		Outside cooling Lubrificat. ext. Aussenkühlung	Internal cooling Lubrificat. cent. Innenkühlung	[bar] p	Order no. N° de Code Bestellnummer
d1	x1			i					
30	35	WFB 20-12	8	6.000	1:1				MPU.Z31.B20.GSC.1310
30	27	WFB 20-12	8	6.000	1:1	x	x	80	MPU.Z31.B20.GSC.1310IK

Passend für Maschine: suitable machines: approprié pour la machine:	A20-3F7N	L20E-2M8	L32-1M12	M232-V	M32-4M5
	A232-VII	L20E-2M10	M220-III	M320-V	M32-5M8
	A32-VII	L32-1M8	M220-V	M332-III	
	A320-VII	L32-1M10	M232-III	M332-V	

Ähnlich OEM Nr. similar to OEM no. semblable au OEM nombre	GSC-1310



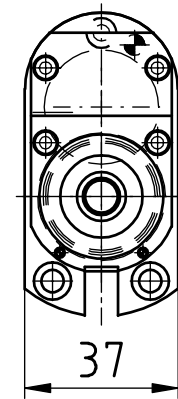
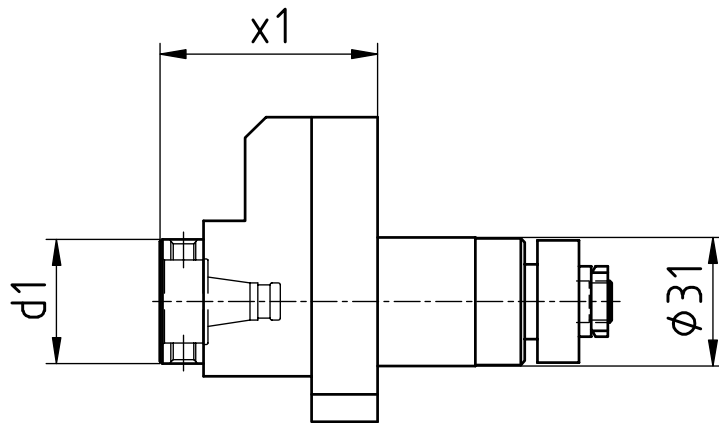
Citizen

Axial-Bohr- und Fräskopf

Axial drilling and milling head

Outil de perçage et de fraisage axiale

WG 35



[mm]	[mm]	Spindle Broche Spindel	[Nm] T max	[rpm] n max	i	Outside cooling Lubrificat. ext. Aussenkühlung	Internal cooling Lubrificat. cent. Innenkühlung	[bar] p	Order no. N° de Code Bestellnummer
d1	x1								
30	52,5	WFB 20-12	3	18.000	1:3				MPU.Z31.B20.BA0.131013

Passend für Maschine: suitable machines: approprié pour la machine:	A20-3F7N	L20E-2M8	L32-1M12	M232-V	M32-4M5
	A232-VII	L20E-2M10	M220-III	M320-V	M32-5M8
	A32-VII	L32-1M8	M220-V	M332-III	
	A320-VII	L32-1M10	M232-III	M332-V	

Ähnlich OEM Nr. similar to OEM no. semblable au OEM nombre	GSC-1310
---	----------

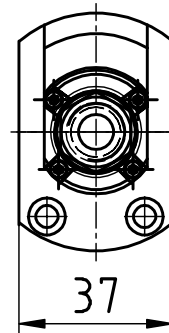
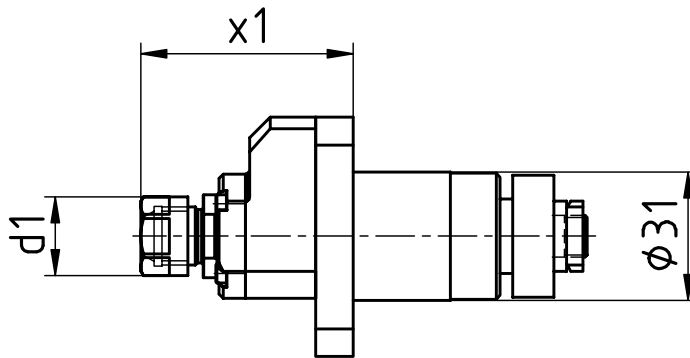
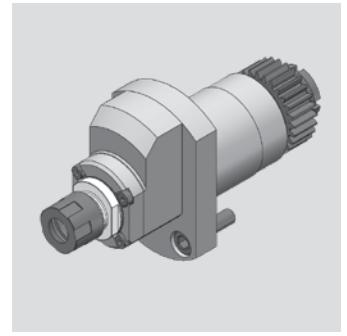
Citizen

Axial-Bohr- und Fräskopf

Axial drilling and milling head

Outil de perçage et de fraisage axiale

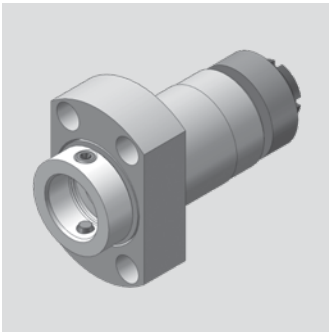
WG 35



[mm]	[mm]	Spindle Broche Spindel	[Nm] T max	[rpm] n max	i	Outside cooling Lubrificat. ext. Aussenkühlung	Internal cooling Lubrificat. cent. Innenkühlung	[bar] p	Order no. N° de Code Bestellnummer
d1	x1								
19	51,5	ER11	2	24.000	1:4				MPU.Z31.E11.BA0.131014

Passend für Maschine: suitable machines: approprié pour la machine:	A20-3F7N	L20E-2M8	L32-1M12	M232-V	M32-4M5
	A232-VII	L20E-2M10	M220-III	M320-V	M32-5M8
	A32-VII	L32-1M8	M220-V	M332-III	
	A320-VII	L32-1M10	M232-III	M332-V	

Ähnlich OEM Nr. similar to OEM no. semblable au OEM nombre	GSC-1310



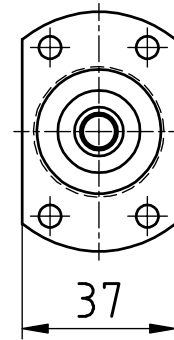
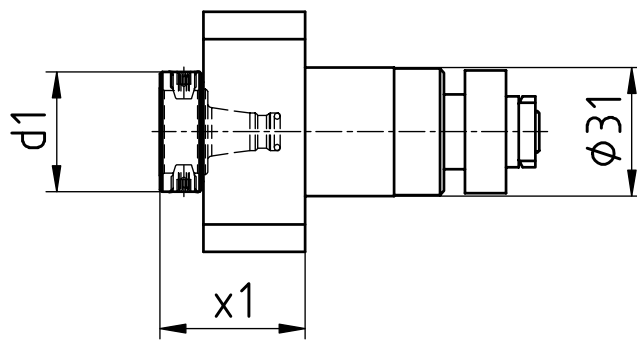
Citizen

Axial-Bohr- und Fräskopf

Axial drilling and milling head

Outil de perçage et de fraisage axiale

WG 35



[mm]	[mm]	Spindle Broche Spindel	[Nm] T max	[rpm] n max	i	Outside cooling Lubrificat. ext. Aussenkühlung	Internal cooling Lubrificat. cent. Innenkühlung	[bar] p	Order no. N° de Code Bestellnummer
d1	x1	WFB 20-12	8	6.000	1:1				MPU.Z31.B20.AA0.L20V

Passend für Maschine:	L20E2M8
suitable machines:	L20E2M10
approprié pour la machine:	L20E-1M12
	L20E-IX

Ähnlich OEM Nr.	GSC-1210
similar to OEM no.	
semblable au OEM nombre	

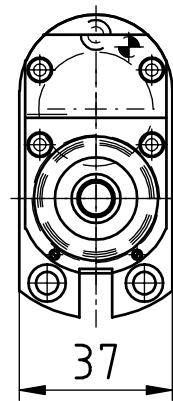
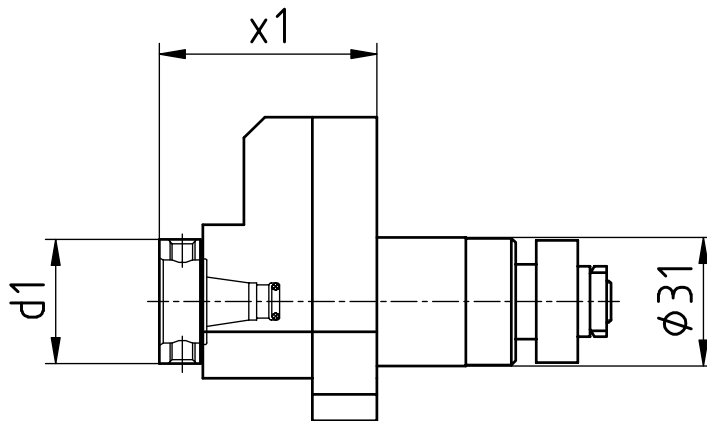
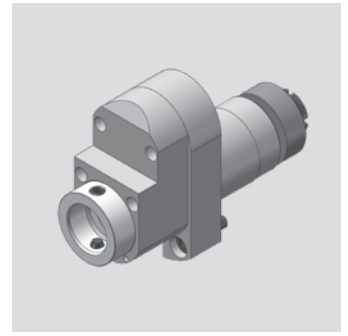
Citizen

Axial-Bohr- und Fräskopf

Axial drilling and milling head

Outil de perçage et de fraisage axiale

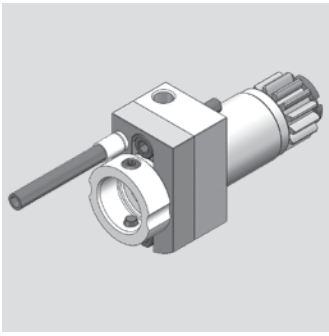
WG 35



[mm]	[mm]	Spindle Broche Spindel	[Nm] T max	[rpm] n max	i	Outside cooling Lubrificat. ext. Aussenkühlung	Internal cooling Lubrificat. cent. Innenkühlung	[bar] p	Order no. N° de Code Bestellnummer
d1	x1								
30	52,5	WFB 20-12	3	18.000	1:3				MPU.Z31.B20.BA0.L20R

Passend für Maschine:	L20E2M8	L20E-IX
suitable machines:	L20E2M10	
approprié pour la machine:	L20E2M12	

Ähnlich OEM Nr.	GSC-1210
similar to OEM no.	
semblable au OEM nombre	



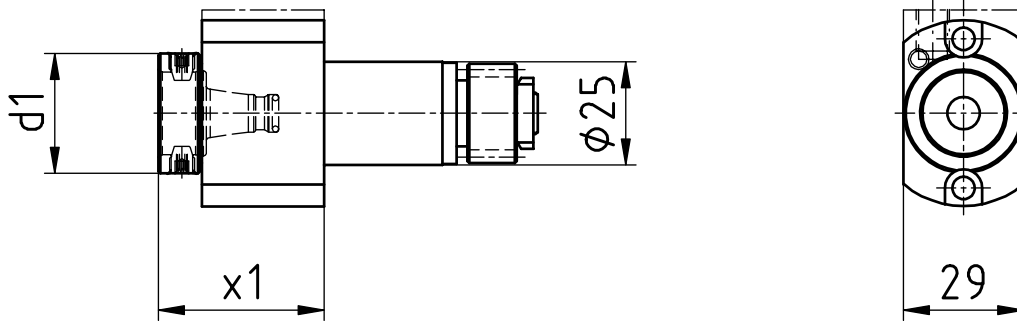
Citizen

Axial-Bohr- und Fräskopf

Axial drilling and milling head

Outil de perçage et de fraisage axiale

WG 35



[mm]	[mm]	Spindle Broche Spindel	[Nm] T max	[rpm] n max		Outside cooling Lubrificat. ext. Aussenkühlung	Internal cooling Lubrificat. cent. Innenkühlung	[bar] p	Order no. N° de Code Bestellnummer
d1	x1			i					
29	40	WFB 20-12	8	6.000	1:1				MPU.Z25.B20.AA0.VX
29	26,5	WFB 20-12	8	6.000	1:1				MPU.Z25.B20.AA0.L20R
29	36,5	WFB 20-12	8	6.000	1:1	x	x	80	MPU.Z25.B20.AE0.L20R

Passend für Maschine: suitable machines: approprié pour la machine:	A20-VII	L20E-2M10	M220-III	M320-V	M212-C	M312-V	M16-4M8
	A20-3F7N	L20E-2M8	M220-V	M332-III	M212-V	M312-VII	
	A320-VII	L20E-IX	M232-III	M332-V	M216-C	M316-III	
	L 12-1M7	L20X	M232-V	M32-4MS	M216-V	M316-V	
	L20E-2M12	L32-1M12	M320-III	M32-4M8	M312-III	M16-4MS	

Ähnlich OEM Nr. similar to OEM no. semblable au OEM nombre	MSC-507

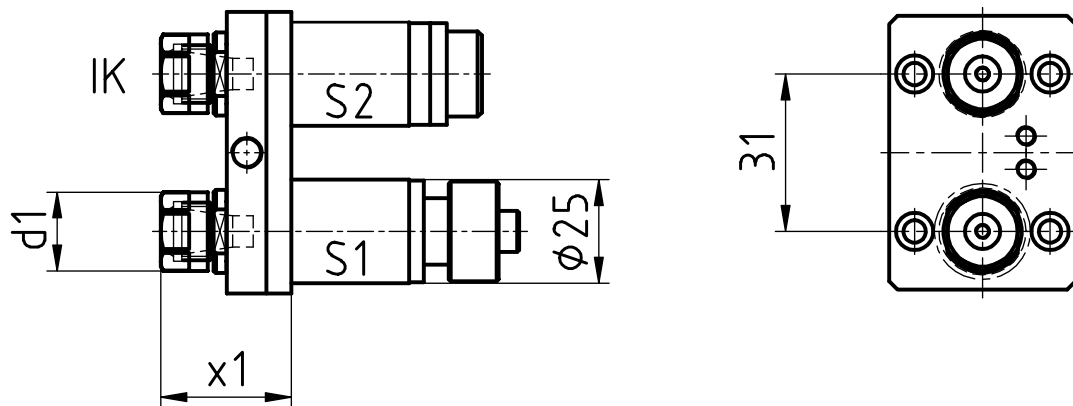
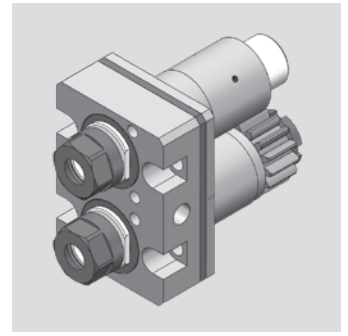
Citizen

Axial Bohr- und Fräskopf

Axial drilling and milling head

Outil de perçage et de fraisage axiale

WG 35



[mm]	[mm]	Spindle Broche Spindel	[Nm] T max	[rpm] n max		Outside cooling Lubrificat. ext. Aussenkühlung	Internal cooling Lubrificat. cent. Innenkühlung	[bar] p	Order no. N° de Code Bestellnummer
d1	x1			i					
19	31	ER11	4*	6.000*	1:1*	x			MPU.Z25.E11.MA0.L20
19	31	ER11	4*	6.000*	1:1*	x	x	80	MPU.Z25.E11.ME0.L20

Passend für Maschine:	L20E2M8	L20E-IX	L20X	M232-III
suitable machines:	L20E2M10	L20V	M220-III	
approprié pour la machine:	L20E-1M12	L20VIII	M220-V	

Ähnlich OEM Nr.	
similar to OEM no.	
semblable au OEM nombre	

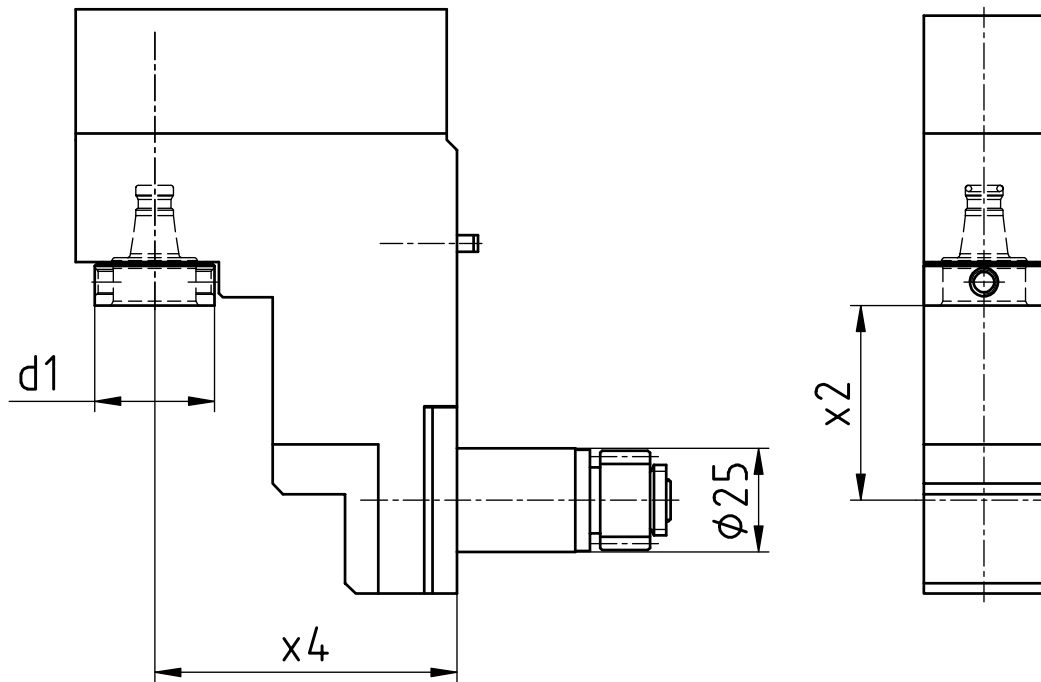
* S1: 4 Nm/6.000 rpm/i=1:1
S2: 2 Nm/9.660 rpm/i=1:1,61



Citizen

Radial-Bohr- und Fräskopf
 Radial drilling and milling head
 Outil de perçage et de fraisage radiale

WG 35



[mm]	[mm]	[mm]	Spindle Broche Spindel	[Nm]	[rpm]	Outside cooling Lubrificat. ext. Aussenkühlung	Internal cooling Lubrificat. cent. Innenkühlung	[bar]	Order no. N° de Code Bestellnummer
d1	x2	x4		T max	n max	i	p		
29	47	73	WFB 20-12	8	6.000	1:1			MPU.Z25.B20.VA0.L20R

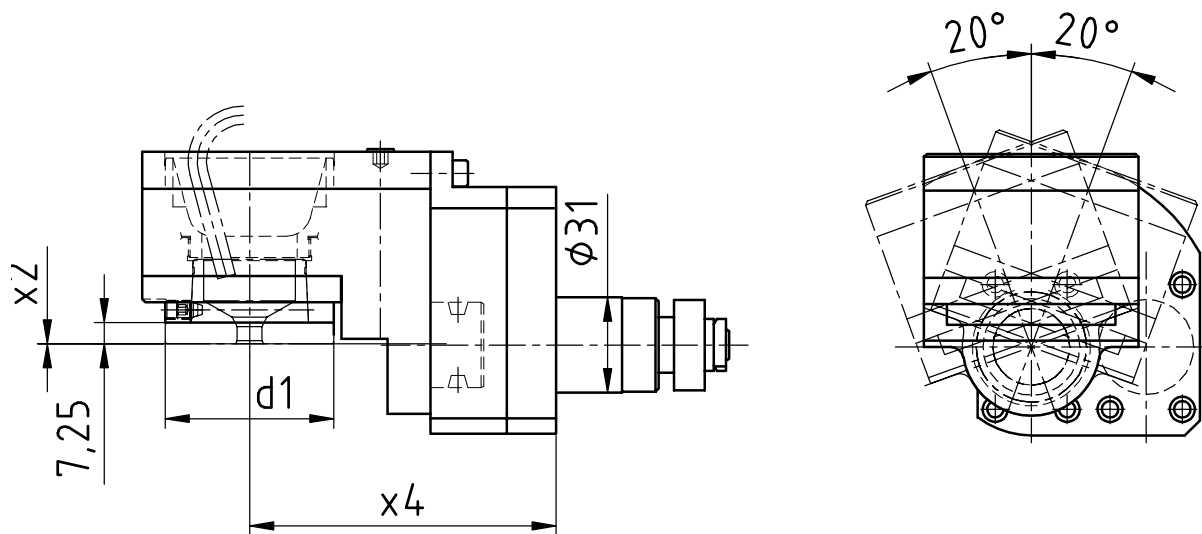
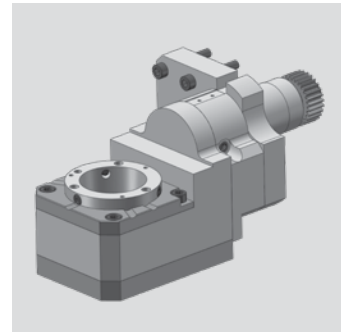
Passend für Maschine:	L20E2M8	L20E-IX
suitable machines:	L20E2M10	L20X
approprié pour la machine:	L20E-1M12	L20XII

Ähnlich OEM Nr.	GSC-1507
similar to OEM no.	
semblable au OEM nombre	

Citizen

Gewindewirbelapparat modular
 Thread whirling unit
 Unité de tourbillonnement

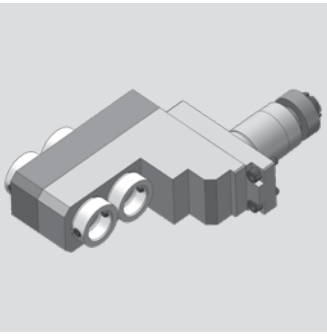
WG 35



[mm]	[mm]	[mm]	Spindle Broche Spindel	[Nm] T max	[rpm] n max		Outside cooling Lubrificat. ext. Aussenkühlung	Internal cooling Lubrificat. cent. Innenkühlung	[bar] p	Order no. N° de Code Bestellnummer
d1	x2	x4				i				
54	0	100	WFW 50	16	6.000	1:1	x			MPU.LSW.101.M0800.L20N

Passend für Maschine:	L20E-2M8	L20E-IX	L32-1M12
suitable machines:	L20E-2M10	L32-1M8	
approprié pour la machine:	L20E-2M12	L32-1M10	

Ähnlich OEM Nr.	
similar to OEM no.	
semblable au OEM nombre	



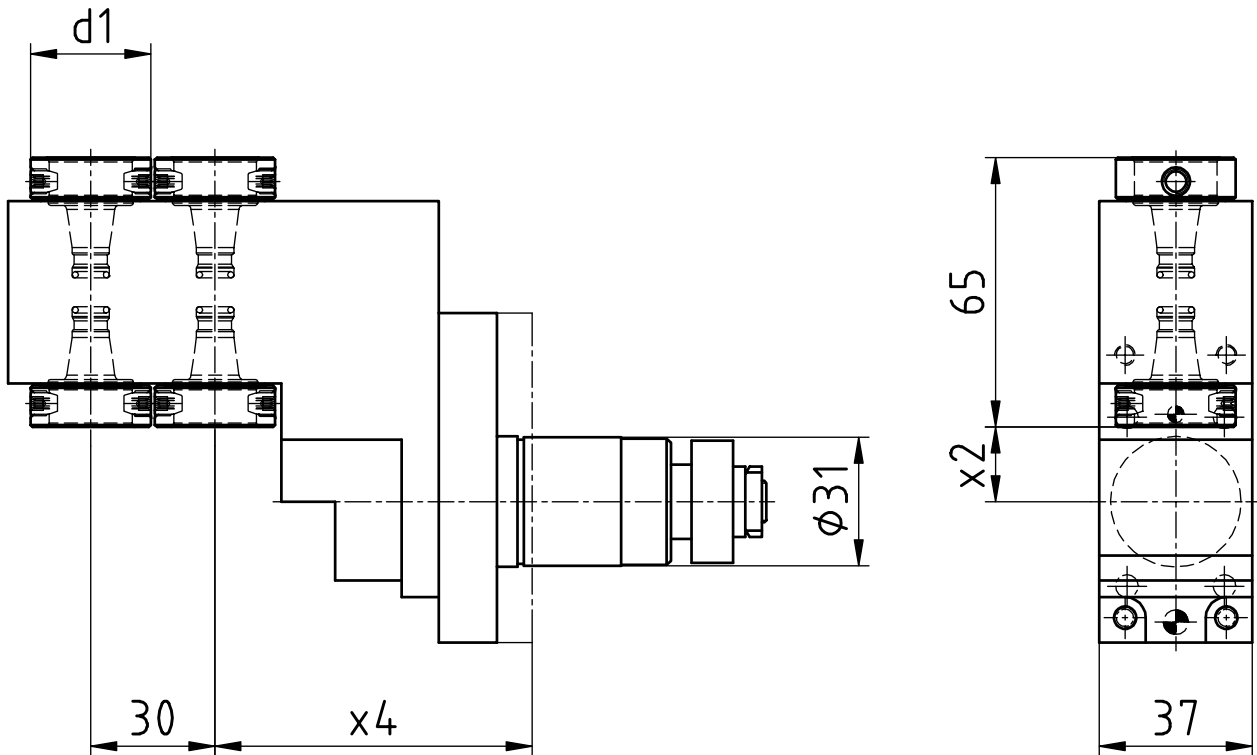
Citizen

Radial-Bohr- und Fräskopf

Radial drilling and milling head

Outil de perçage et de fraisage radiale

WG 35



[mm]	[mm]	[mm]	Spindle Broche Spindel	[Nm] T max	[rpm] n max i	Outside cooling Lubrificat. ext. Aussenkühlung	Internal cooling Lubrificat. cent. Innenkühlung	[bar] p	Order no. N° de Code Bestellnummer
d1	x2	x4							
29	18	76,5	WFB 20-12	3	8.880	1:1,48			MPU.Z31.B20.4A0.3107

Passend für Maschine:	L20E2M8	L20E-IX	L20VIII
suitable machines:	L20E2M10	L20V	L20X
approprié pour la machine:	L20E-1M12	L20VII	

Ähnlich OEM Nr.	GSE-3107
similar to OEM no.	
semblable au OEM nombre	

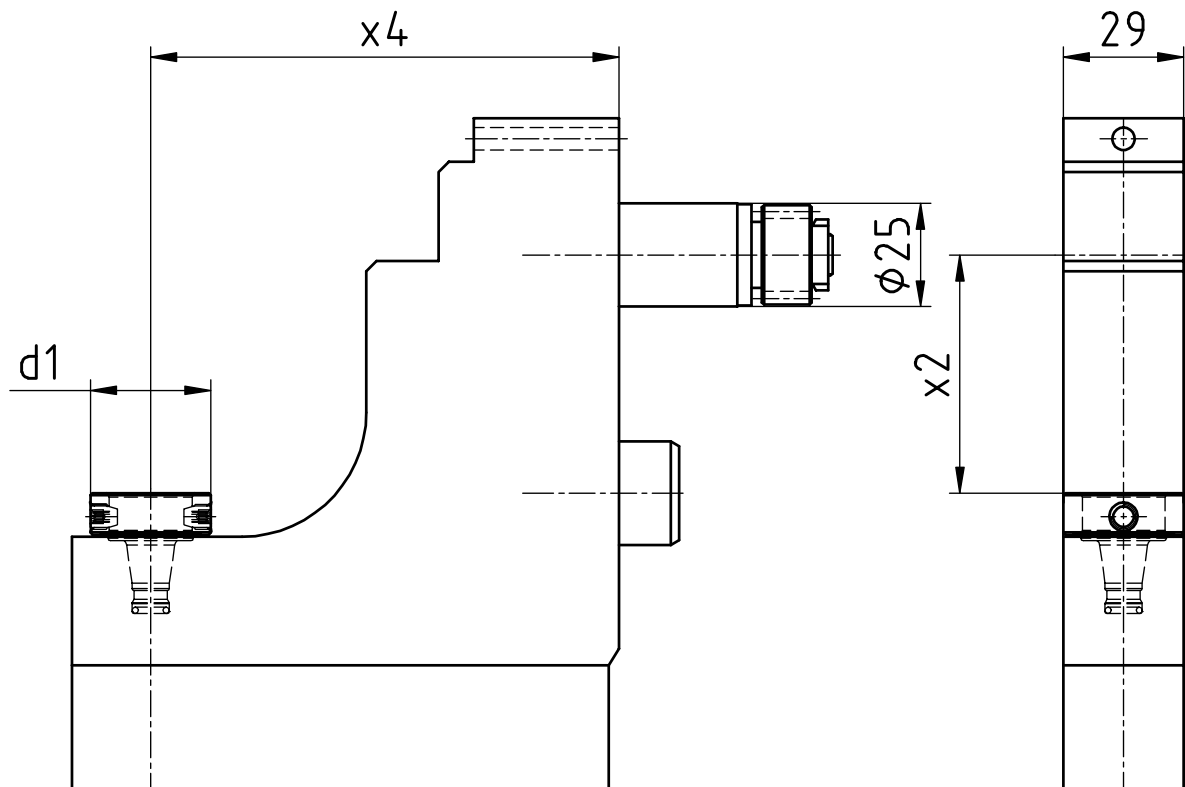
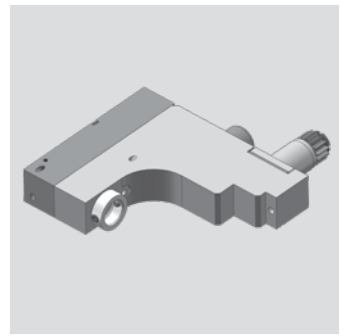
Citizen

Radial-Bohr- und Fräskopf

Radial drilling and milling head

Outil de perçage et de fraisage radiale

WG 35



[mm]	[mm]	[mm]	Spindle Broche Spindel	[Nm] T max	[rpm] n max		Outside cooling Lubrificat. ext. Aussenkühlung	Internal cooling Lubrificat. cent. Innenkühlung	[bar] p	Order no. N° de Code Bestellnummer
d1	x2	x4			i					
29	57,5	113	WFB 20-12	8	6.000	1:1	x			MPU.Z25.B20.VA0.L20V

Passend für Maschine: L20X
 suitable machines:
 approprié pour la machine:

Ähnlich OEM Nr. GSC-1407
 similar to OEM no.
 semblable au OEM nombre



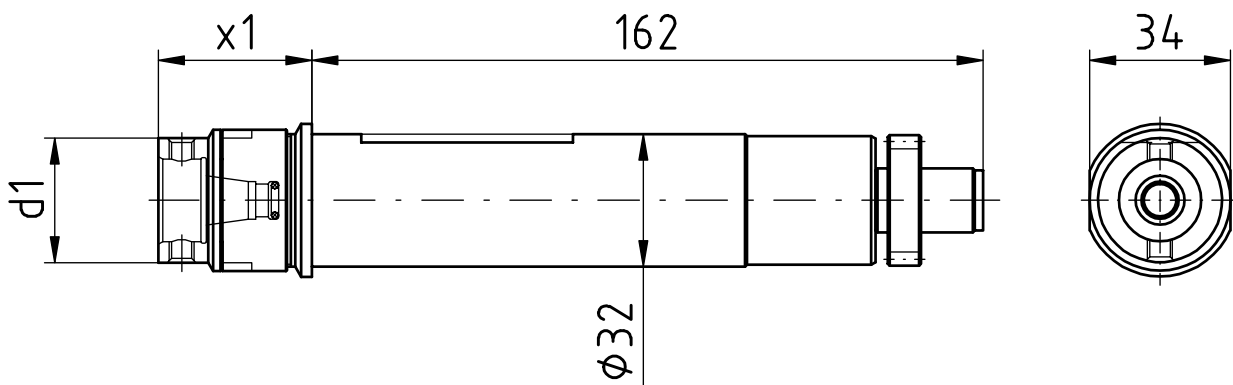
Citizen

Axial-Bohr- und Fräskopf

Axial drilling and milling head

Outil de perçage et de fraisage axiale

WG 35



[mm]	[mm]	Spindle Broche Spindel	[Nm] T max	[rpm] n max i	Outside cooling Lubrificat. ext. Aussenkühlung	Internal cooling Lubrificat. cent. Innenkühlung	[bar] p	Order no. N° de Code Bestellnummer
d1	x1							
30	37	WFB 20-12	10	6.000	1:1			MPU.GSC.310.AA0.B20

Passend für Maschine:	L25
suitable machines:	L32
approprié pour la machine:	

Ähnlich OEM Nr.	
similar to OEM no.	
semblable au OEM nombre	

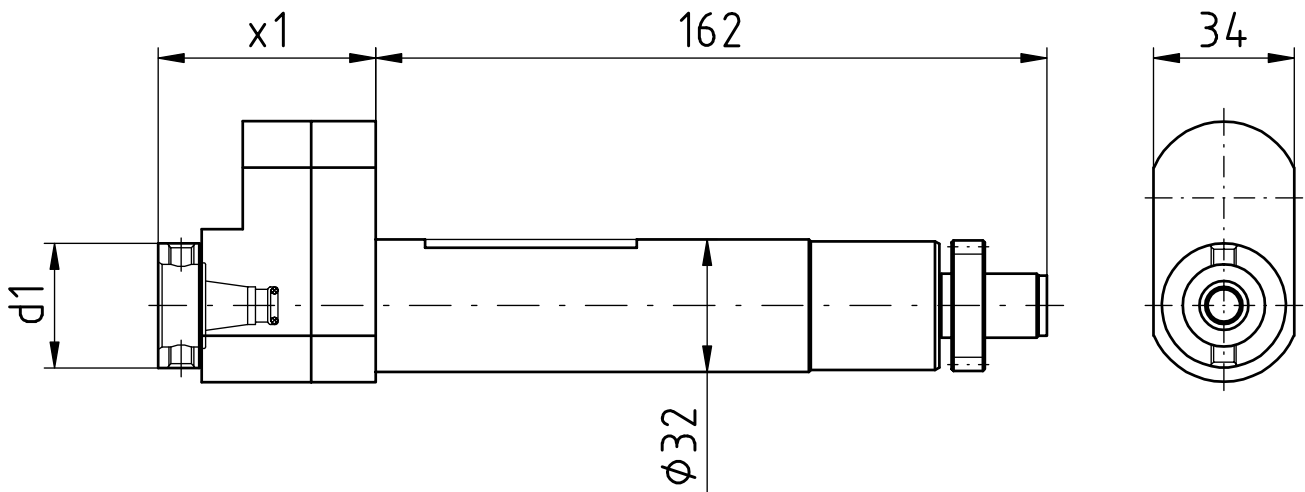
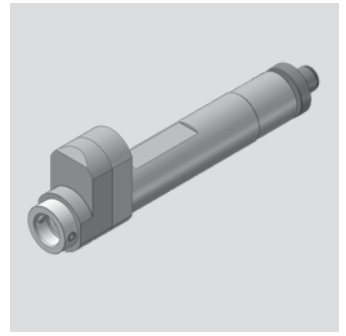
Citizen

Axial-Bohr- und Fräskopf

Axial drilling and milling head

Outil de perçage et de fraisage axiale

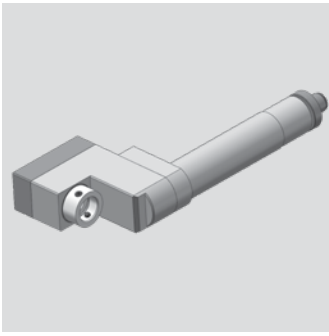
WG 35



[mm]	[mm]	Spindle Broche Spindel	[Nm] T max	[rpm] n max	i	Outside cooling Lubrificat. ext. Aussenkühlung	Internal cooling Lubrificat. cent. Innenkühlung	[bar] p	Order no. N° de Code Bestellnummer
d1	x1								
30	52,5	WFB 20-12	3	18.000	1:3				MPU.GSC.610.AA0.B20

Passend für Maschine: L25
 suitable machines: L32
 approprié pour la machine:

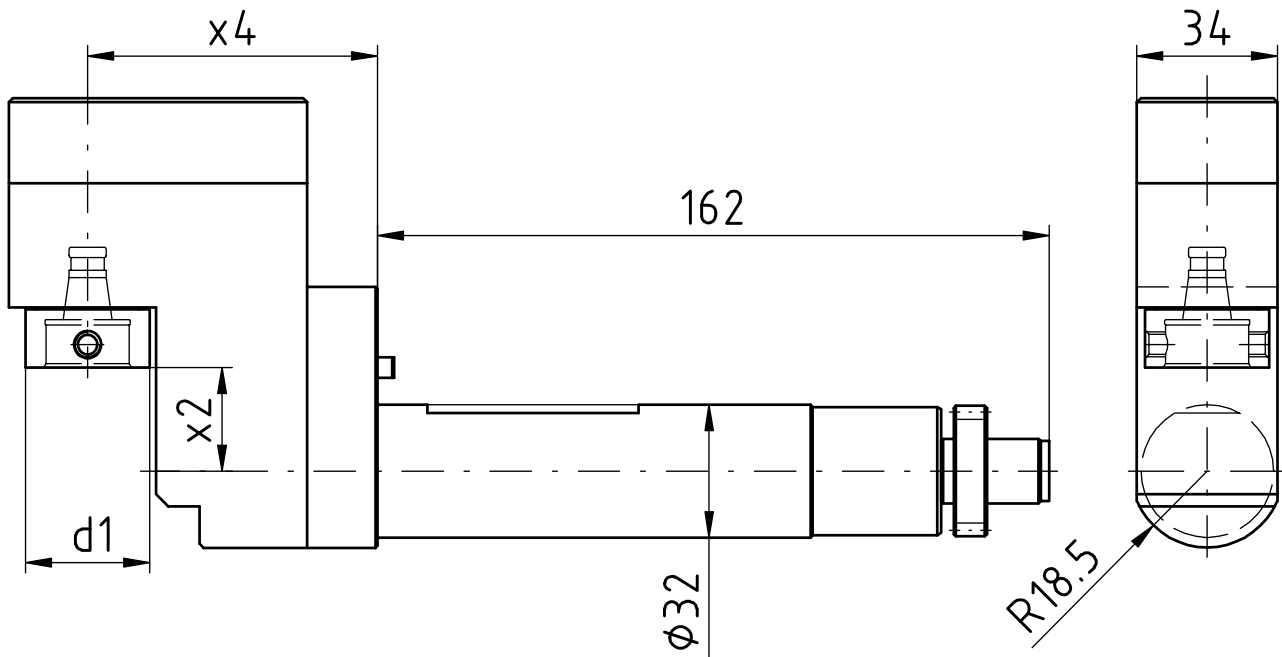
Ähnlich OEM Nr.
 similar to OEM no.
 semblable au OEM nombre



Citizen

Radial-Bohr- und Fräskopf
 Radial drilling and milling head
 Outil de perçage et de fraisage radiale

WG 35



[mm]	[mm]	[mm]	Spindle Broche Spindel	[Nm] T max	[rpm] n max i	Outside cooling Lubrificat. ext. Aussenkühlung	Internal cooling Lubrificat. cent. Innenkühlung	[bar] p	Order no. N° de Code Bestellnummer
d1	x2	x4	WFB 20-12	4	12.000	1:2			MPU.GSE.307.XA0.B20

Passend für Maschine: L25
 suitable machines: L32
 approprié pour la machine:

Ähnlich OEM Nr.
 similar to OEM no.
 semblable au OEM nombre

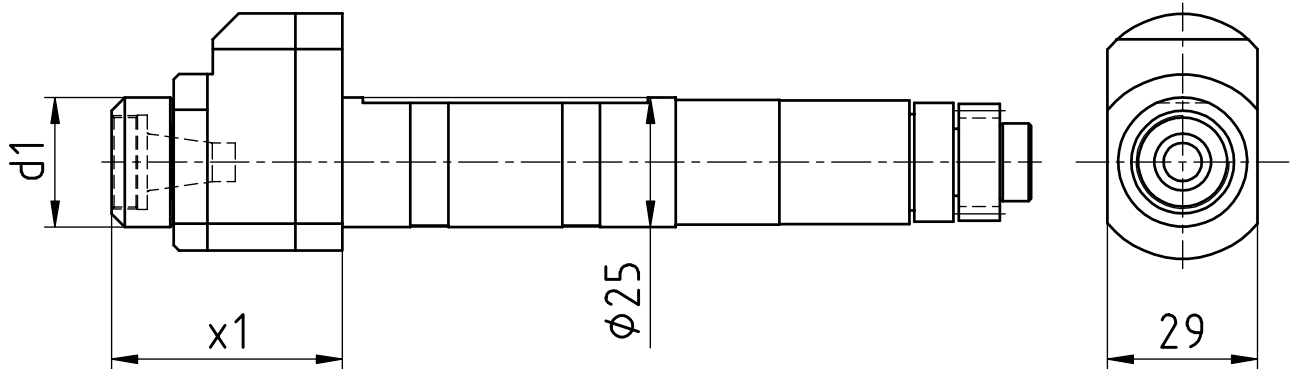
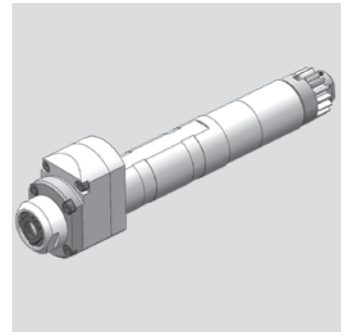
Citizen

Axial-Bohr- und Fräskopf

Axial drilling and milling head

Outil de perçage et de fraisage axiale

WG 35



[mm]	[mm]	Spindle Broche Spindel	[Nm] T max	[rpm] n max	i	Outside cooling Lubrificat. ext. Aussenkühlung	Internal cooling Lubrificat. cent. Innenkühlung	[bar] p	Order no. N° de Code Bestellnummer
d1	x1								
25	44,5	ER11	3	24.000	1:3				MPU.GSC.607.BA0.E11

Passend für Maschine:	M212-C	M216-V	M316-III
suitable machines:	M212-V	M312-III	M316-V
approprié pour la machine:	M216-C	M312-V	

Ähnlich OEM Nr.	GSC-607
similar to OEM no.	
semblable au OEM nombre	



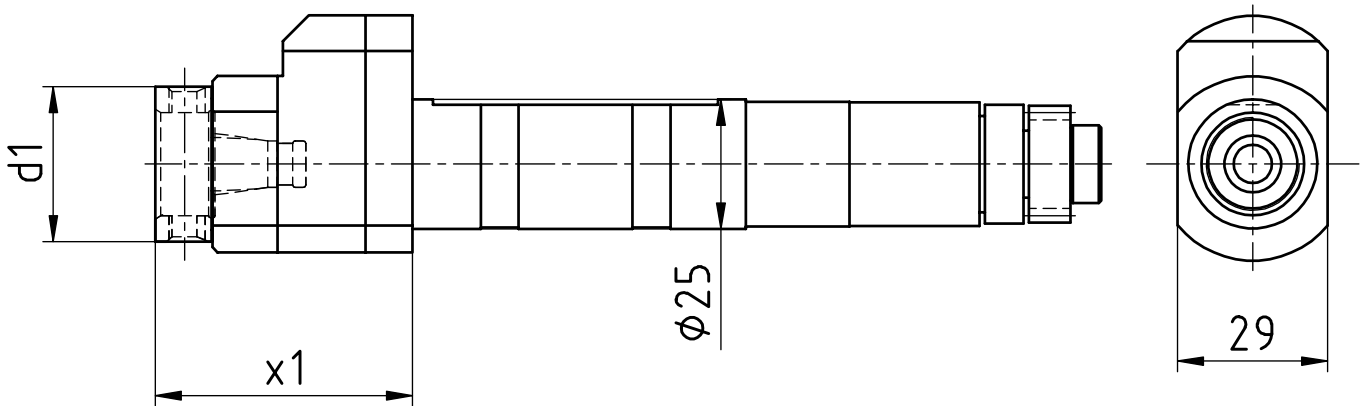
Citizen

Axial-Bohr- und Fräskopf

Axial drilling and milling head

Outil de perçage et de fraisage axiale

WG 35



[mm]	[mm]	Spindle Broche Spindel	[Nm] T max	[rpm] n max	i	Outside cooling Lubrificat. ext. Aussenkühlung	Internal cooling Lubrificat. cent. Innenkühlung	[bar] p	Order no. N° de Code Bestellnummer
d1	x1								
29	49,6	WFB 20-12	3	24.000	1:3				MPU.GSC.607.BA0.B20

Passend für Maschine: suitable machines: approprié pour la machine:	M212-C	M216-V	M316-III
	M212-V	M312-III	M316-V
	M216-C	M312-V	

Ähnlich OEM Nr. similar to OEM no. semblable au OEM nombre	GSC-607
---	---------

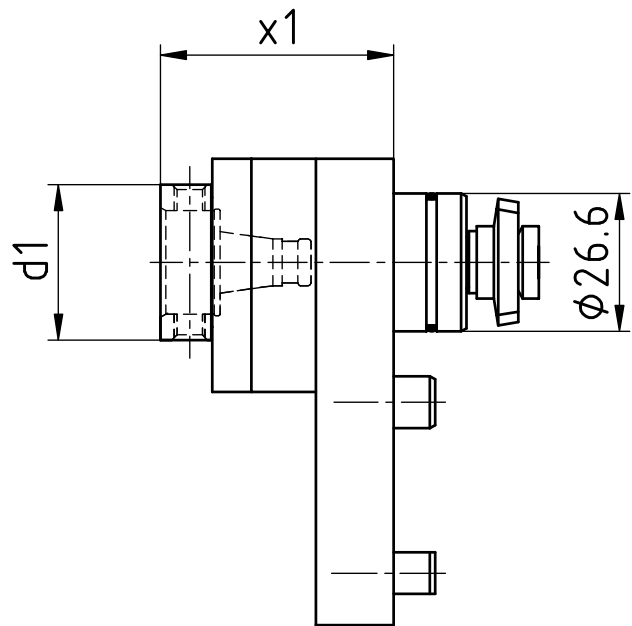
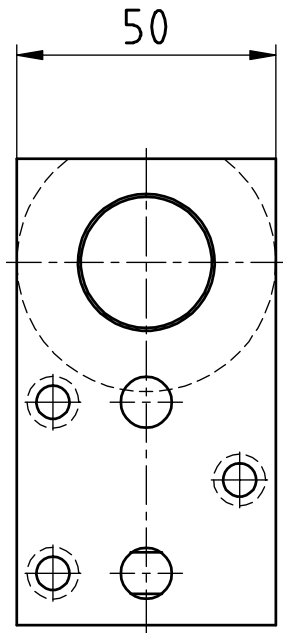
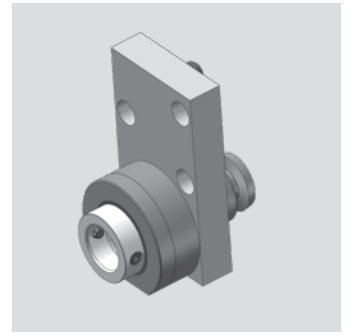
Citizen

Axial-Bohr- und Fräskopf

Axial drilling and milling head

Outil de perçage et de fraisage axiale

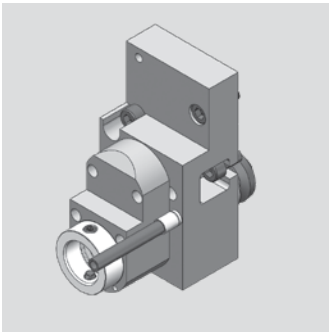
WG 35



[mm]	[mm]	Spindle Broche Spindel	[Nm] T max	[rpm] n max	i	Outside cooling Lubrificat. ext. Aussenkühlung	Internal cooling Lubrificat. cent. Innenkühlung	[bar] p	Order no. N° de Code Bestellnummer
d1	x1								
30	45	WFB 20-12	10	6.000	1:1				MPU.MSC.106.AA0.B20

Passend für Maschine:	M212-C	M216-V	M316-III	M16-4M8
suitable machines:	M212-V	M312-III	M316-V	
approprié pour la machine:	M216-C	M312-V	M16-4MS	

Ähnlich OEM Nr.	MSC-106
similar to OEM no.	
semblable au OEM nombre	



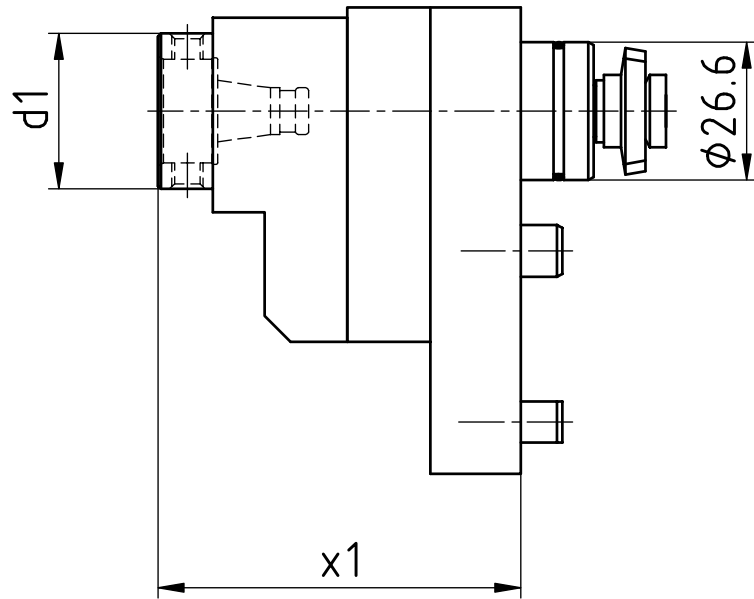
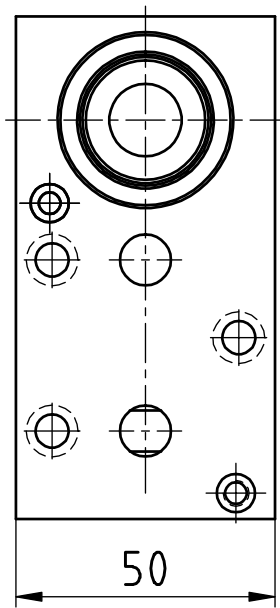
Citizen

Axial-Bohr- und Fräskopf

Axial drilling and milling head

Outil de perçage et de fraisage axiale

WG 35



[mm]	[mm]	Spindle Broche Spindel	[Nm] T max	[rpm] n max	i	Outside cooling Lubrificat. ext. Aussenkühlung	Internal cooling Lubrificat. cent. Innenkühlung	[bar] p	Order no. N° de Code Bestellnummer
d1	x1								
30	70	WFB 20-12	3	18.000	1:3				MPU.MSC.106.BA0.B20

Passend für Maschine:	M212-C	M216-V	M316-III	M16-4MB
suitable machines:	M212-V	M312-III	M316-V	
approprié pour la machine:	M216-C	M312-V	M16-4MS	

Ähnlich OEM Nr.	MSC-106
similar to OEM no.	
semblable au OEM nombre	

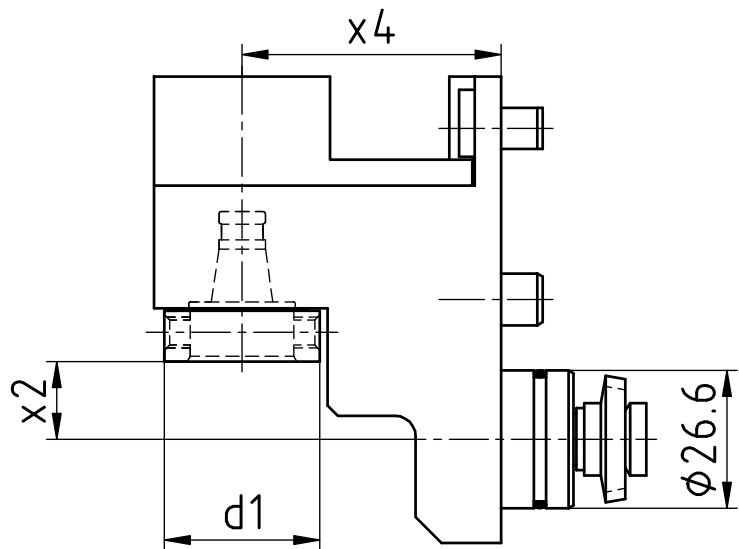
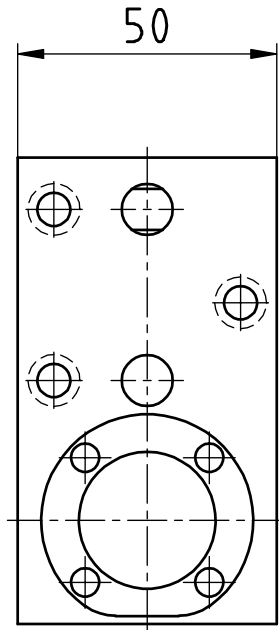
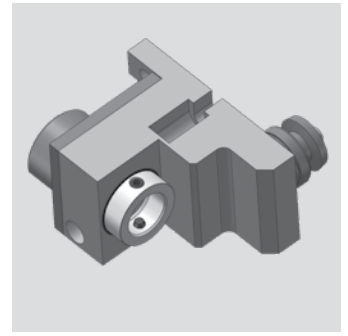
Citizen

Radial-Bohr- und Fräskopf

Radial drilling and milling head

Outil de perçage et de fraisage radiale

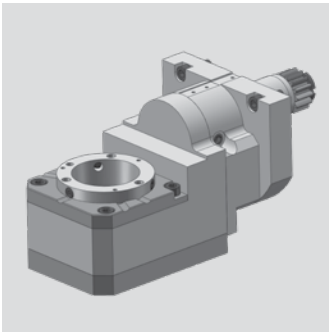
WG 35



[mm]	[mm]	[mm]	Spindle Broche Spindel	[Nm]	[rpm]	Outside cooling Lubrificat. ext. Aussenkühlung	Internal cooling Lubrificat. cent. Innenkühlung	[bar]	Order no. N° de Code Bestellnummer
d1	x2	x4		T max	n max	i		p	
30	15	50	WFB 20-12	6	12.000	1:2			MPU.MSE.106.XA0.B20

Passend für Maschine:	M212-C	M216-V	M316-III	M16-4M8
suitable machines:	M212-V	M312-III	M316-V	
approprié pour la machine:	M216-C	M312-V	M16-4M5	

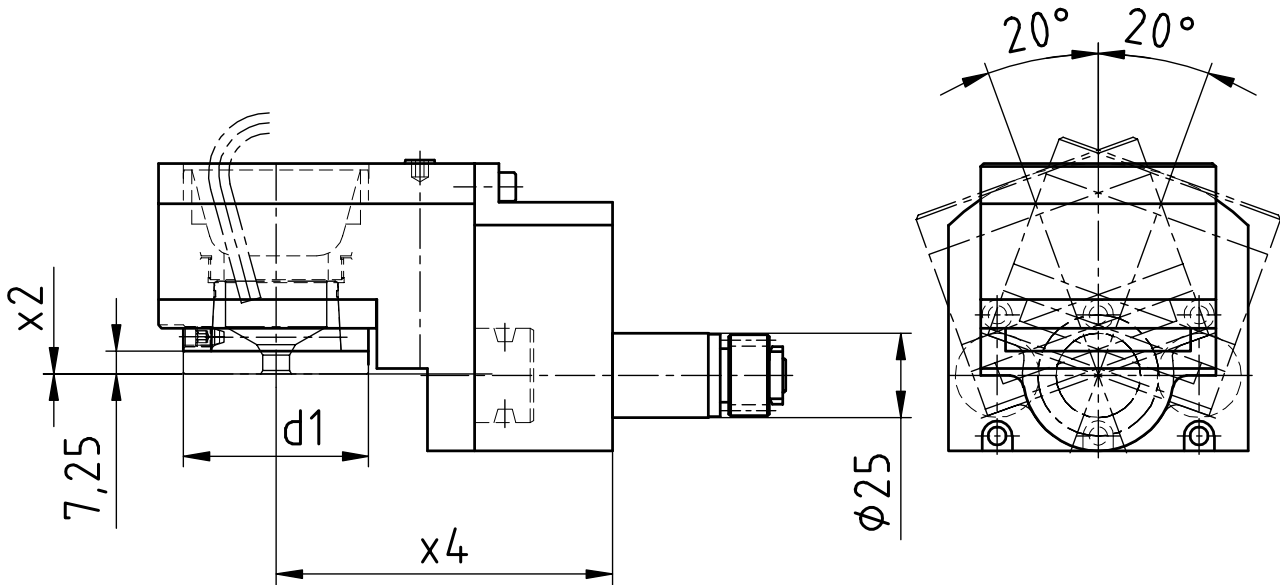
Ähnlich OEM Nr.	MSE-106
similar to OEM no.	
semblable au OEM nombre	



Citizen

Gewindewirbelapparat modular
 Thread whirling unit
 Unité de tourbillonnement

WG 35



[mm]	[mm]	[mm]	Spindle Broche Spindel	[Nm]	[rpm]		Outside cooling Lubrificat. ext. Aussenkühlung	Internal cooling Lubrificat. cent. Innenkühlung	[bar]	Order no. N° de Code Bestellnummer
d1	x2	x4		T max	n max	i			p	
54	0	100	WFW 50	16	6.000	1:1	x			MPU.LSW.424.M0800.M16

Passend für Maschine:	M16-4M5
suitable machines:	M16-4M8
approprié pour la machine:	L 12-1M7

Ähnlich OEM Nr.	
similar to OEM no.	
semblable au OEM nombre	

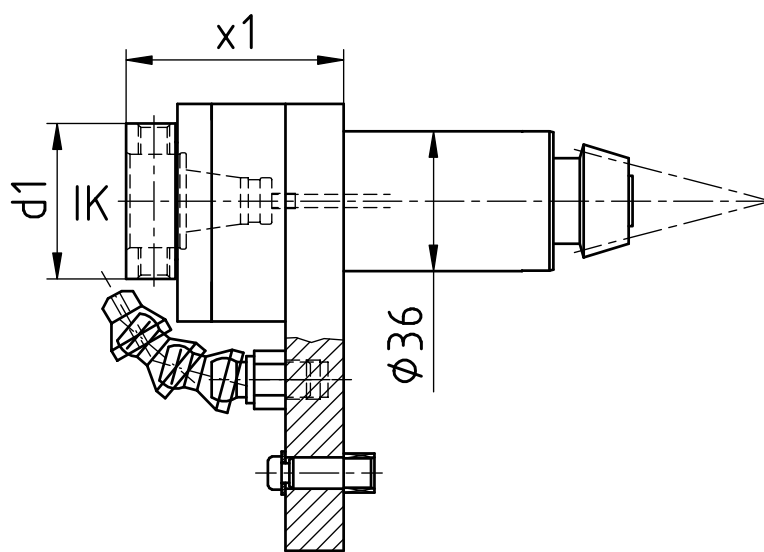
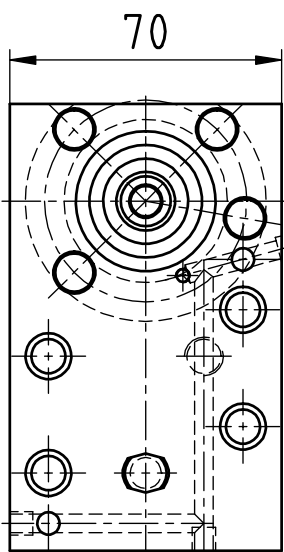
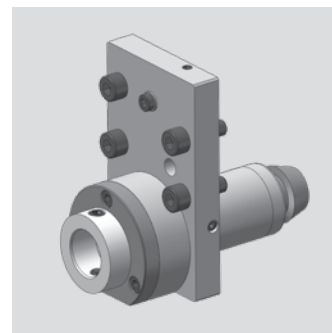
Citizen

Axial-Bohr- und Fräskopf

Axial drilling and milling head

Outil de perçage et de fraisage axiale

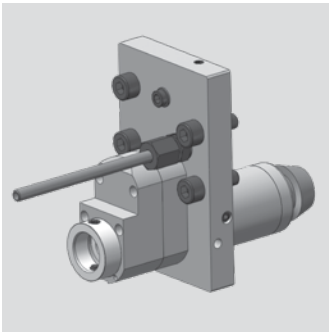
WG 35



[mm]	[mm]	Spindle Broche Spindel	[Nm] T max	[rpm] n max		Outside cooling Lubrificat. ext. Aussenkühlung	Internal cooling Lubrificat. cent. Innenkühlung	[bar] p	Order no. N° de Code Bestellnummer
d1	x1			i					
40	56	WFB 24-16	16	5.000	1:1	x			MPU.KSC.110.AA0.B24
40	56	WFB 24-16	16	5.000	1:1	x	x	80	MPU.KSC.110.AE0.B24

Passend für Maschine:	M220-III	M232-V	M332-III	M32-4M8
suitable machines:	M220-V	M320-III	M332-V	
approprié pour la machine:	M232-III	M320-V	M32-4M5	

Ähnlich OEM Nr.	KSC-110
similar to OEM no.	
semblable au OEM nombre	



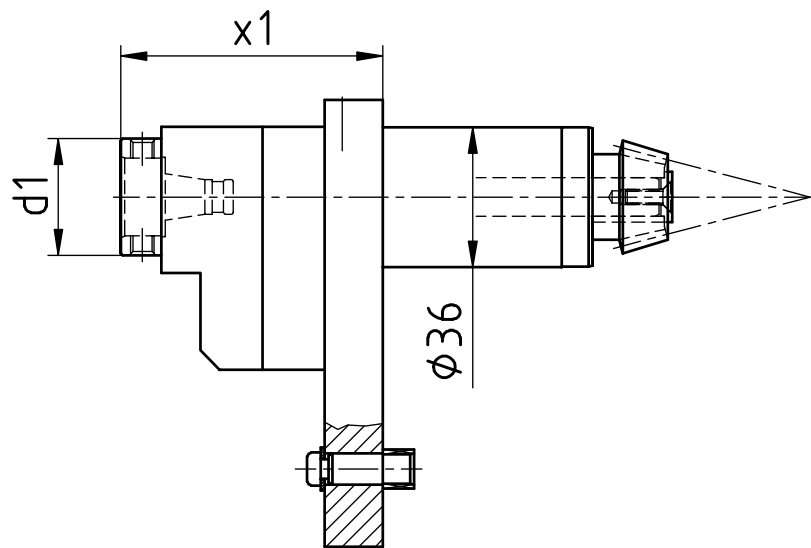
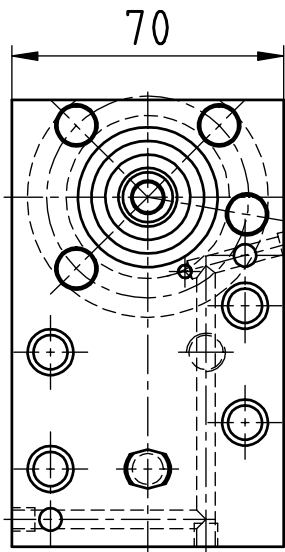
Citizen

Axial-Bohr- und Fräskopf

Axial drilling and milling head

Outil de perçage et de fraisage axiale

WG 35



[mm]	[mm]	Spindle Broche Spindel	[Nm] T max	[rpm] n max	i	Outside cooling Lubrificat. ext. Aussenkühlung	Internal cooling Lubrificat. cent. Innenkühlung	[bar] p	Order no. N° de Code Bestellnummer
d1	x1								
40	67,5	WFB 20-12	3	15.000	1:3	x			MPU.KSC.110.BA0.B20

Passend für Maschine:	M220-III	M232-V	M332-III	M32-4M8
suitable machines:	M220-V	M320-III	M332-V	
approprié pour la machine:	M232-III	M320-V	M32-4M5	

Ähnlich OEM Nr.	KSC-110
similar to OEM no.	
semblable au OEM nombre	

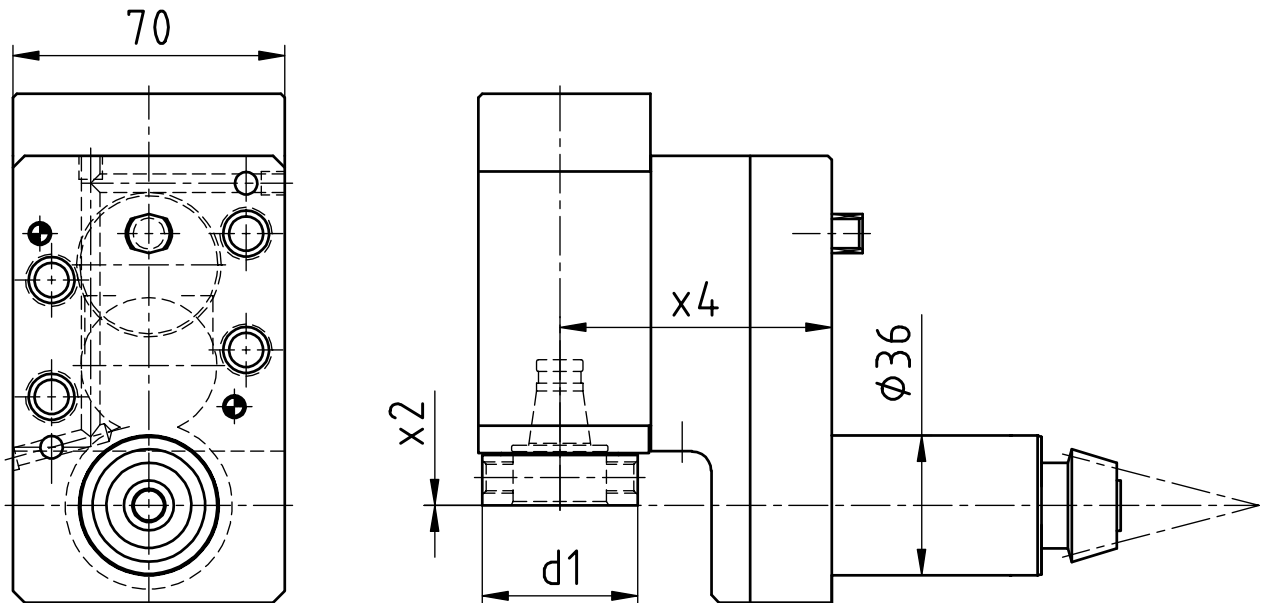
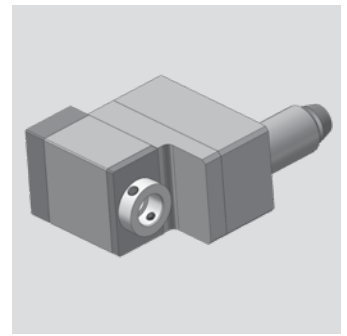
Citizen

Radial-Bohr- und Fräskopf

Radial drilling and milling head)

Outil de perçage et de fraisage radiale

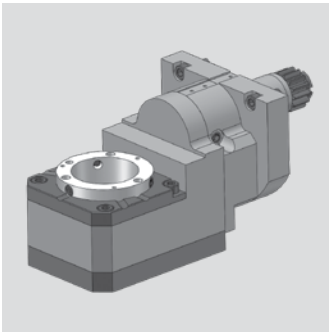
WG 35



[mm]	[mm]	[mm]	Spindle Broche	[Nm]	[rpm]		Outside cooling Lubrificat. ext.	Internal cooling Lubrificat. cent.	[bar]	Order no. N° de Code
d1	x2	x4	Spindel	T max	n max	i	Aussenkühlung	Innenkühlung	p	Bestellnummer
40	0	70	WFB 24-16	10	10.000	1:2	x			MPU.KSE.310.XA0.B24
40	0	70	WFB 24-16	10	10.000	1:2	x	x	80	MPU.KSE.310.XE0.B24
50	30	70	WFB 32-20	15	5.000	1:1	x			MPU.KSE.310.VA0.B32
50	30	70	WFB 32-20	15	5.000	1:1	x	x	80	MPU.KSE.310.VE0.B32
50	30	70	WFB 32-20	30	2.500	2:1	x			MPU.KSE.310.WA0.B32
50	30	70	WFB 32-20	30	2.500	2:1	x	x	80	MPU.KSE.310.WE0.B32

Passend für Maschine:	M220-III	M232-V	M332-III	M32-4M8
suitable machines:	M220-V	M320-III	M332-V	
approprié pour la machine:	M232-III	M320-V	M32-4M5	

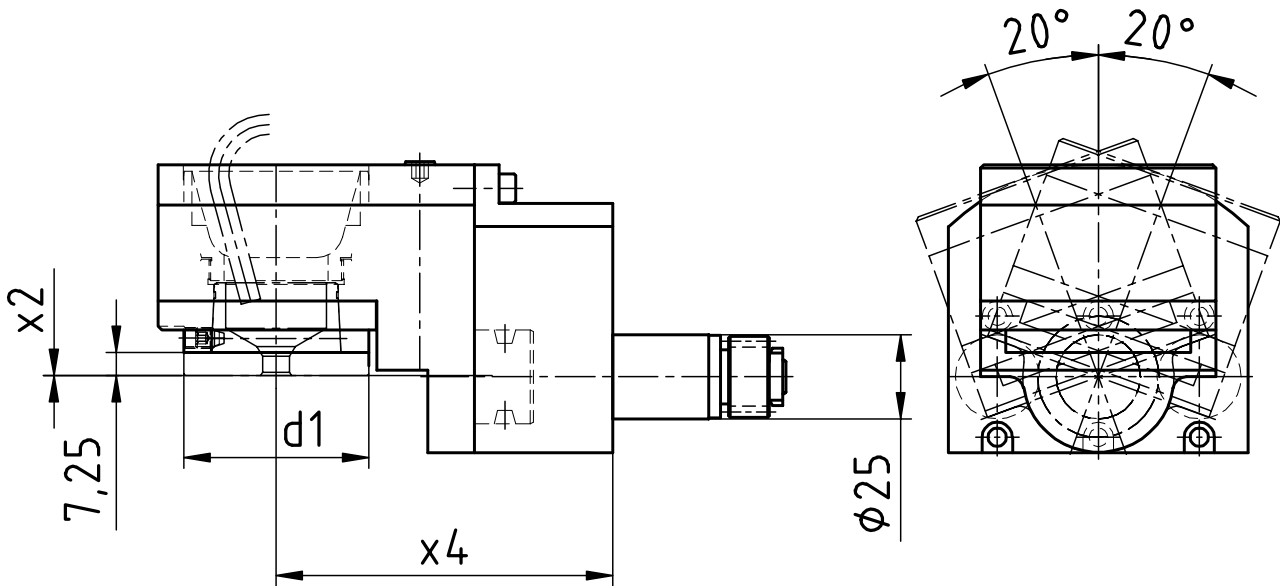
Ähnlich OEM Nr.	KSC-110
similar to OEM no.	
semblable au OEM nombre	



Citizen

Gewindewirbelapparat modular
 Thread whirling unit
 Unité de tourbillonnement

WG 35



[mm]	[mm]	[mm]	Spindle Broche Spindel	[Nm]	[rpm]	Outside cooling Lubrificat. ext. Aussenkühlung	Internal cooling Lubrificat. cent. Innenkühlung	[bar]	Order no. N° de Code Bestellnummer
d1	x2	x4		T max	n max	i	p		
54	0	100	WFW 50	16	6.000	1:1	x		MPU.LSW.101.M0800.L12

Passend für Maschine: L12
 suitable machines:
 approprié pour la machine:

Ähnlich OEM Nr.
 similar to OEM no.
 semblable au OEM nombre