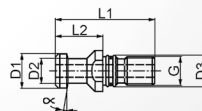


# ACCESSORI PER MANDRINI

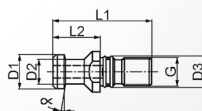
MPC | DPC | UPC | FPC | AFC

## Tiranti DIN 69872-A con foro interno



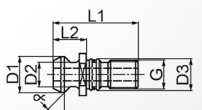
Descrizione	Cod. art.	L1	L2	D1	D2	D3	$\alpha$	G	max. Nm	per Coni
AZB40-DIN-A	<b>2910500</b>	54	26	19	14	17	15 °	M16	50	40
AZB50-DIN-A	<b>2910700</b>	74	34	28	21	25	15 °	M24	150	50

## Tiranti DIN 69872-B senza foro interno



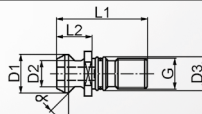
Descrizione	Cod. art.	L1	L2	D1	D2	D3	$\alpha$	G	max. Nm	per Coni
AZB40-DIN-B	2911500	54	26	19	14	17	15 °	M16	50	40
AZB50-DIN-B	2911700	74	34	28	21	25	15 °	M24	150	50

## Tiranti ISO 7388/II-B con foro interno



Descrizione	Cod. art.	L1	L2	D1	D2	D3	$\alpha$	G	max. Nm	per Coni
AZB40-ISO-A	2920500	44,5	16,4	18,95	12,95	17	45 °	M16	50	40
AZB50-ISO-A	2920700	65	25,5	29	19,6	25	45 °	M24	150	50

## Tiranti ISO 7388-B senza foro interno

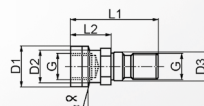


Descrizione	Cod. art.	L1	L2	D1	D2	D3	$\alpha$	G	max. Nm	per Coni
AZB40-ISO-B	2921500	44,5	16,4	18,95	12,95	17	45 °	M16	50	40
AZB50-ISO-B	2921700	65	25,5	29	19,6	25	45 °	M24	150	50

# ACCESSORI PER MANDRINI

## MPC | DPC | UPC | FPC | AFC

### Tiranti DIN 2080 con filetto interno



Descrizione	Cod. art.	L1	L2	D1	D2	D3	$\alpha$	G	max. Nm	per Coni
AZB40-DIN2080-G	2943500	54	25	25	21,6	17	15 °	M16	50	40
AZB50-DIN2080-G	2943700	65	25,1	39,3	32	25	15 °	M24	150	50