

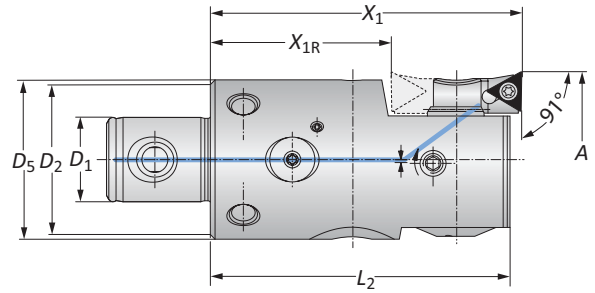
## Boring Heads

Diameter Range: 50.00 mm - 65.50 mm



**NOTE:** Metric item pictured  
**NOTE:** Digital adjustment accuracy of 0.002 mm on diameter

Form 101



Form 20

### 564 Digital Boring Heads

MVS Connection	Boring Range	Boring Head					Weight	Insert Form	Part No.	
		$D_2$   $D_1$	A	$X_1$	$X_{1R}$	$L_2$			$D_5$	Insert Holder
m	40 - 22	50.00 - 65.50	75.00	47.00	72.50	42.00	0.80 (kg)	20	210052	564034
	40 - 22	50.00 - 65.50	75.00	47.00	72.50	42.00	0.80 (kg)	101	210062	564034

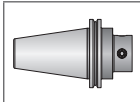
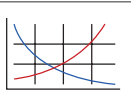
**NOTE:**  $X_{1R}$  = rotated insert holder for reverse machining  
**NOTE:** Insert holders and inserts sold separately

B10-M: 12-13

B10-F

B10: VI-VII

Key on B10-A:1



m = Metric (mm)

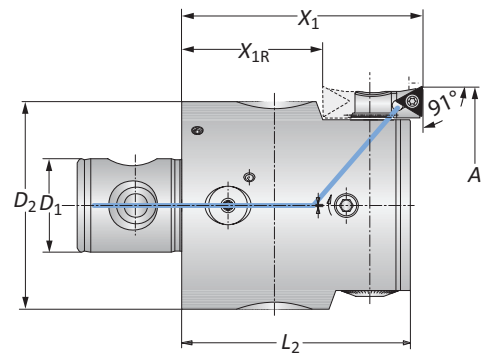
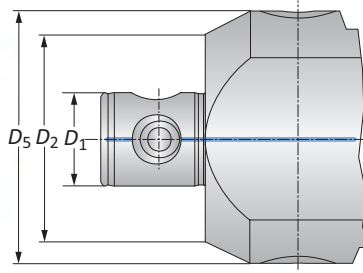
**IMPORTANT:** Max spindle speed refers to maximum possible speed for an individual boring head and is not a recommended parameter. Refer to page B10-M: 12 for recommended application-specific parameters. Factory technical assistance is available for your specific applications through our Application Engineering department.  
 email: [engineering.eu@alliedmachine.com](mailto:engineering.eu@alliedmachine.com)

## Boring Heads

Alu-Line | Diameter Range: 65.00 mm - 205.00 mm



Form 101



Form 20

**NOTE:** Metric item pictured  
**NOTE:** Digital adjustment accuracy of 0.002 mm on diameter

### 564 Digital Alu-Line Boring Heads

MVS Connection	Boring Range	Boring Head					Weight	Insert Form	Part No.	
		$D_2   D_1$	A	$X_1$	$X_{1R}$	$L_2$			$D_5$	Insert Holder
m	50 - 28	65.00 - 83.00	75.00	39.00	73.00	-	0.60 (kg)	20	210020	564045
	50 - 28	65.00 - 83.00	75.00	39.00	73.00	-	0.60 (kg)	101	210063	564045
	50 - 28	65.00 - 83.00	75.00	39.00	73.00	-	0.60 (kg)	103	210064	564045
	63 - 36	82.00 - 103.00	90.00	54.00	88.00	-	1.00 (kg)	20	210020	564046
	63 - 36	82.00 - 103.00	90.00	54.00	88.00	-	1.00 (kg)	101	210063	564046
	63 - 36	82.00 - 103.00	90.00	54.00	88.00	-	1.00 (kg)	103	210064	564046
	80 - 36	100.00 - 130.00	90.00	54.00	88.00	-	1.50 (kg)	20	210020	564047
	80 - 36	100.00 - 130.00	90.00	54.00	88.00	-	1.50 (kg)	101	210063	564047
	80 - 36	100.00 - 130.00	90.00	54.00	88.00	-	1.50 (kg)	103	210064	564047
	80 - 36	125.00 - 167.50	90.00	54.00	88.00	100.00	1.90 (kg)	20	210020	564048
	80 - 36	125.00 - 167.50	90.00	54.00	88.00	100.00	1.90 (kg)	101	210063	564048
	80 - 36	125.00 - 167.50	90.00	54.00	88.00	100.00	1.90 (kg)	103	210064	564048
80 - 36	162.50 - 205.00	90.00	54.00	88.00	135.00	2.50 (kg)	20	210020	564049	
80 - 36	162.50 - 205.00	90.00	54.00	88.00	135.00	2.50 (kg)	101	210063	564049	
80 - 36	162.50 - 205.00	90.00	54.00	88.00	135.00	2.50 (kg)	103	210064	564049	

**NOTE:**  $X_{1R}$  = rotated insert holder for reverse machining  
**NOTE:** Insert holders and inserts sold separately

B10-M: 12-13

B10-F

B10: VI-VII

Key on B10-A:1

m = Metric (mm)

**IMPORTANT:** Max spindle speed refers to maximum possible speed for an individual boring head and is not a recommended parameter. Refer to page B10-M: 12 for recommended application-specific parameters. Factory technical assistance is available for your specific applications through our Application Engineering department.  
 email: [engineering.eu@alliedmachine.com](mailto:engineering.eu@alliedmachine.com)