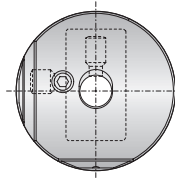
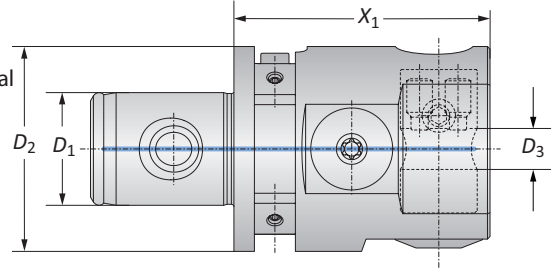


Boring Heads

Diameter Range: 0.40 mm - 12.00 mm



Fine Radial Stroke
+1.1 mm
-0.1 mm

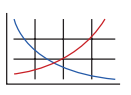


NOTE: Adjustment accuracy of 0.002 mm on diameter

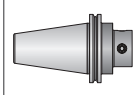
Boring Heads

MVS Connection	Boring Range	Boring Head		Weight	Part No.
		D_2 D_1	D_3		
40 - 22	0.40 - 12.00	8.00	50.00	0.42 (kg)	510001

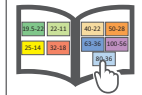
B10-M: 12-13



B10-F



B10: VI-VII



Key on B10-A:1

= Metric (mm)

IMPORTANT: Max spindle speed refers to maximum possible speed for an individual boring head and is not a recommended parameter. Refer to page B10-M: 12 for recommended application-specific parameters. Factory technical assistance is available for your specific applications through our Application Engineering department.
email: engineering.eu@alliedmachine.com