

Balanced Digital 564 Product Overview

Balanced Digital 564 FINE BORING

Adjustable diameter for precise machining.

Wohlhaupter® Balance Digital 564 boring heads feature automatic balancing with an easy-to-read digital display. For diameter ranges above 65.00 mm, 564 boring heads are made of lightweight aluminium. 564 boring heads are specifically engineered to minimise the residual imbalance produced by insert holder displacement. Reverse boring applications can be achieved by rotating the insert holders.

Test the **engineered lightweight** boring head today.

- Diameter range: 50.00 mm - 205.00 mm
- Alu-Line diameter range: 65.00 mm - 205.00 mm
 - Special coating on Alu-Line for wear-resistant surface
 - Alu-Line body reduces tool weight by 50%, reducing stress on the spindle
- Digital readout advantage for diameter adjustments of 0.002 mm
- Through coolant
- Internal balancing improves tool life and surface finish
- Insert holder can be rotated for back boring jobs
- Max cutting speed: 2,000 M/min
- Max coolant pressure: 40 bar



Aluminium Boring Head
65.00 mm - 205.00 mm

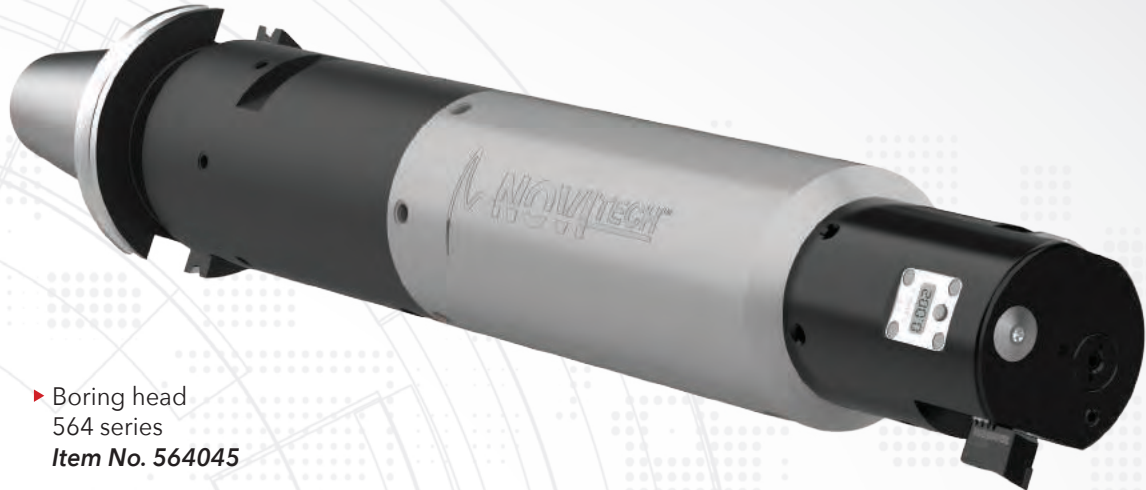
Steel Boring Head
50.00 mm - 65.50 mm

NOTE: Metric items pictured

NOTE: Digital adjustment accuracy of 0.002 mm on diameter

IMPORTANT: Max spindle speed refers to maximum possible speed for an individual boring head and is not a recommended parameter. Refer to page B10-M: 12 for recommended application-specific parameters. Factory technical assistance is available for your specific applications through our Application Engineering department.
email: engineering.eu@alliedmachine.com

WOHLHAUPTER® 564 BORING HEAD with NOVI^{TECH}



- ▶ Boring head
564 series
Item No. 564045
- ▶ NOVI^{TECH} vibration dampening
intermediate module
Item No. 519005

NOTE: Metric items pictured

NOTE: Digital adjustment accuracy of
0.002 mm on diameter

The Wohlhaupter 564 boring head with the
NOVI^{TECH} vibration dampening module provided:



Excellent surface finish



Eliminated vibration and chatter

		Measure	564 Boring Head with NOVI ^{TECH}
Product:	Wohlhaupter 564 Boring Head with NOVI ^{TECH}	RPM	430 RPM
Objectives:	0.05 mm concentricity over the length of two bores spaced 355.6 mm apart	Speed	107.28 M/min
Material:	Cast iron	Feed Rate	0.08 mm/rev
Hole Ø:	79.375 mm	Penetration Rate	33 mm/min
Depth:	7xD	Cycle Time (per hole)	3 min 32 sec
		Hole Finish	3.8 Ra