

M306



**Corps de fraise avec
plaquette interchangeable**

Ø Alésage à partir de 10 mm

**Corpo fresa a inserti
intercambiabili**

Foro-Ø da 10 mm

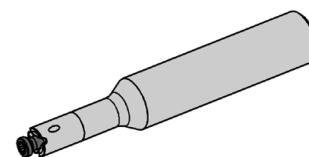
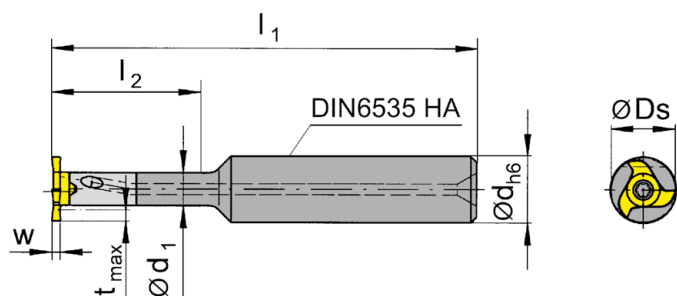
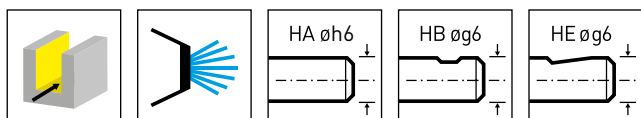
Corps de fraise

Corpo fresa

M306



B



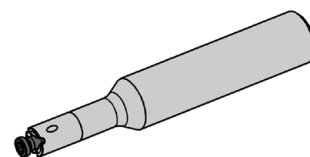
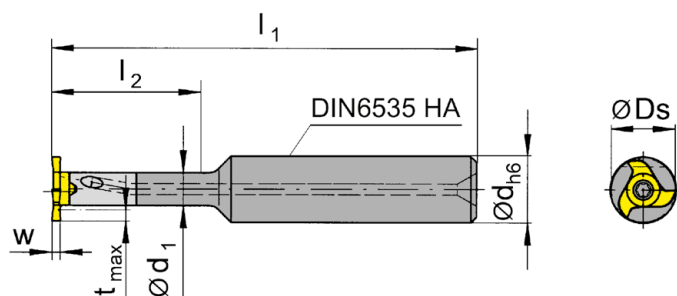
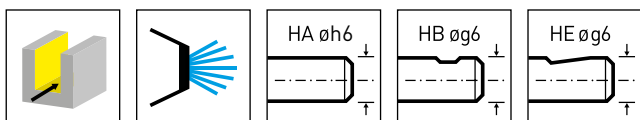
N° de commande Codice prodotto	d	l ₁	l ₂	d ₁	Forme Forma	HWS
M306.0012.01A	12	80	21	6	A	306060R • 306060L
M306.0012.02A	12	90	30	6	A	306060R • 306060L
M306.0012.03A	12	100	42	6	A	306060R • 306060L
M306.0012.01B	12	80	21	6	B	306060R • 306060L
M306.0012.02B	12	90	30	6	B	306060R • 306060L
M306.0012.03B	12	100	42	6	B	306060R • 306060L
M306.0012.01E	12	80	21	6	E	306060R • 306060L
M306.0012.02E	12	90	30	6	E	306060R • 306060L
M306.0012.03E	12	100	42	6	E	306060R • 306060L

w, Ds, tmax voir plaquettes
w, Ds, tmax vd. Inserti

Pièces Détachées

Ricambi

Corps de fraise Corpo fresa	Vis de serrage Vite di serraggio	Tournevis TORX PLUS® Cacciavite TORX PLUS®
M306...	2.6.5T8EP	T8PL



N° de commande Codice prodotto	d	l ₁	l ₂	d ₁	Forme Forma	HWS
M306.0712.02A	12	90	30	7,3	A	306060R • 306060L
M306.0716.01A	16	100	25	7,3	A	306060R • 306060L
M306.0716.02A	16	110	35	7,3	A	306060R • 306060L
M306.0712.02B	12	90	30	7,3	B	306060R • 306060L
M306.0716.01B	16	100	25	7,3	B	306060R • 306060L
M306.0712.02E	12	90	30	7,3	E	306060R • 306060L
M306.0716.01E	16	100	25	7,3	E	306060R • 306060L

w, Ds, tmax voir plaquettes
w, Ds, tmax vd. Inserti

Pièces Détachées

Ricambi

Corps de fraise Corpo fresa	Vis de serrage Vite di serraggio	Tournevis TORX PLUS® Cacciavite TORX PLUS®
M306...	2.6.5T8EP	T8PL

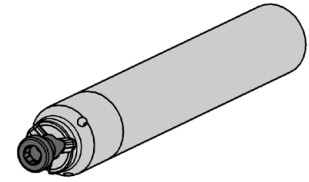
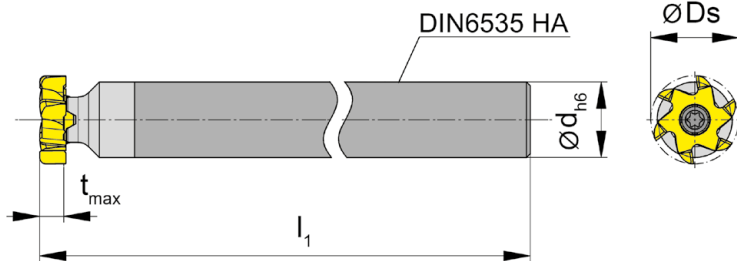
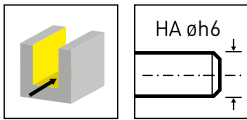
Corps de fraise

Corpo fresa

M306



B



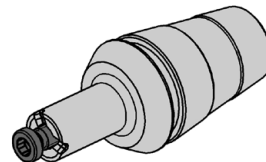
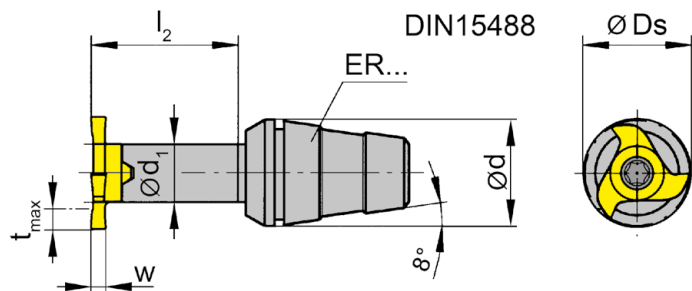
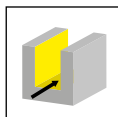
N° de commande Codice prodotto	d	l ₁	Forme Forma	HWS
M306.0707.03A	7,5	100	A	306060R • 306060L
M306.1010.03A	10	120	A	306060R • 306060L

t_{max} et D_s voir plaquettes
t_{max} e D_s vd. inserti

Pièces Détachées

Ricambi

Corps de fraise Corpo fresa	Vis de serrage Vite di serraggio	Tournevis TORX PLUS® Cacciavite TORX PLUS®
M306...	2.6.5T8EP	T8PL



N° de commande Codice prodotto	d	l ₂	d ₁	Bague de serrage Ghiera di bloccaggio	HWS
M306.ER11.02	11	16	6	ER11.6499	306060R • 306060L

w, Ds, tmax voir plaquettes

w, Ds, tmax vd. Inserti

L'écrou de serrage est vendu séparément!

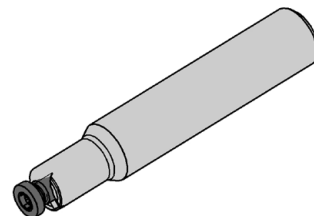
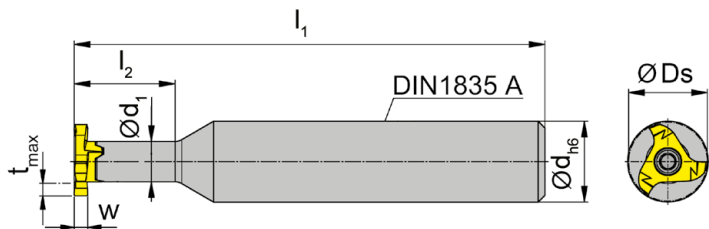
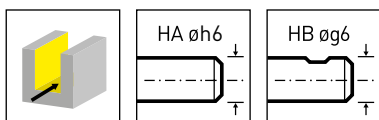
La ghiera di bloccaggio non è compresa con la fresa - deve essere ordinata separatamente

Pièces Détachées

Ricambi

Corps de fraise Corpo fresa	Vis de serrage Vite di serraggio	Tournevis TORX PLUS® Cacciavite TORX PLUS®
M306.ER11.02	2.6.5T8EP	T8PL

B



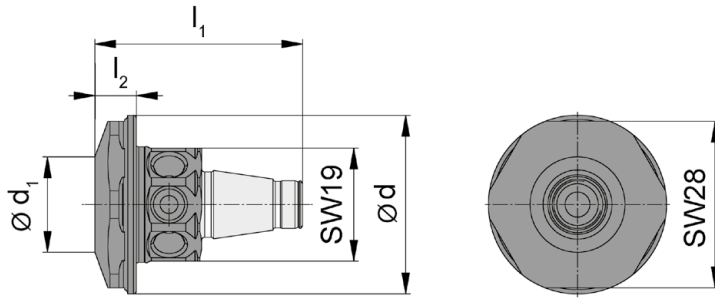
N° de commande Codice prodotto	d	l ₁	l ₂	d ₁	Forme Forma	HWS
M306.ST10.01A	10	60	15	6	A	306060R • 306060L
M306.ST12.01A	12	70	15	6	A	306060R • 306060L
M306.ST10.01B	10	60	15	6	B	306060R • 306060L
M306.ST12.01B	12	70	15	6	B	306060R • 306060L

w, Ds, tmax voir plaquettes
w, Ds, tmax vd. Inserti

Pièces Détachées

Ricambi

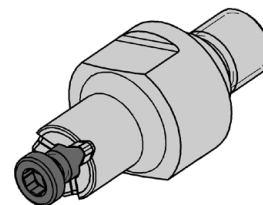
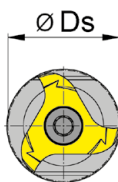
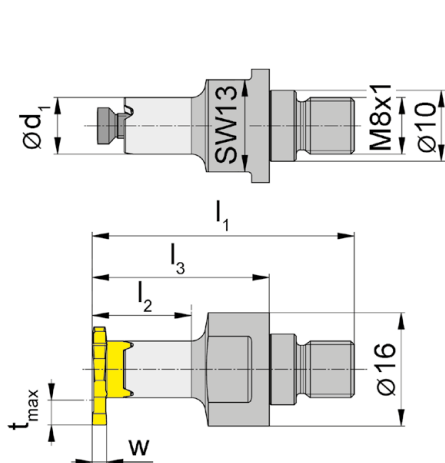
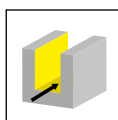
Corps de fraise Corpo fresa	Vis de serrage Vite di serraggio	Tournevis TORX PLUS® Cacciavite TORX PLUS®
M306...	2.6.5T8EP	T8PL



N° de commande Codice prodotto	l_1	l_2	d_1	d
WFB.2012.M081.01	35	7	16	30

pour Corps de fraise vissé
per Fresa avvitabile

B



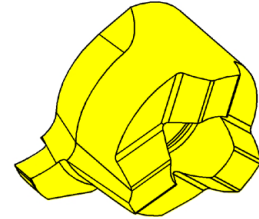
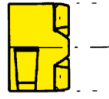
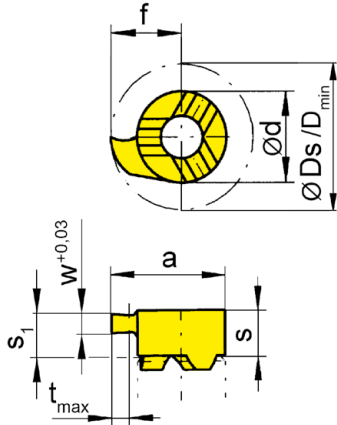
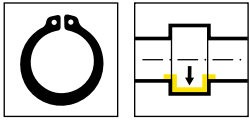
N° de commande Codice prodotto	l_1	l_2	l_3	d_1	SW
M306.M081.01	37	11	25	6	13

w, D_s , t_{max} voir plaquettes
w, D_s , t_{max} vd. Inserti

Pièces Détachées

Ricambi

Corps de fraise vissé Fresa avvitabile	Vis de serrage Vite di serraggio	Tournevis TORX PLUS® Cacciavite TORX PLUS®
M306.M081.01	2.6.5T8EP	T8PL



R = version à droite représentée
R = versione destra come in figura

L = version à gauche
L = versione sinistra a specchio

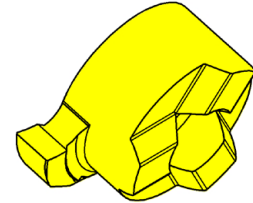
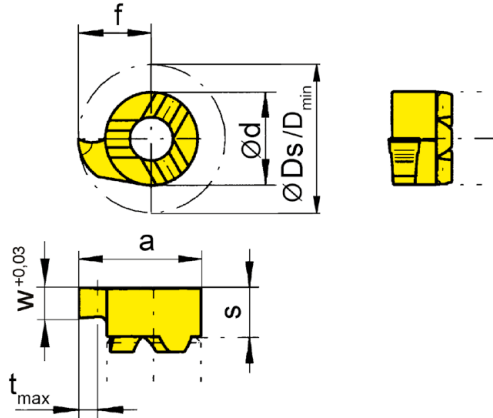
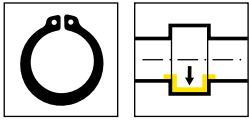
▲ en stock
a stock

Nuance
Leghe
Δ 4 semaines
4 settimane

N° de commande Codice prodotto	w	Nw	f	Ds	d	s	s ₁	a	t _{max}	D _{min}	Z	HIS	EG55	TH35	TN35	
R108.0070.00	0,74	0,7	4,8	9,6	6	3,6	3,2	7,8	1	8	1	306060R	▲	▲	▲	
R108.0080.00	0,84	0,8	4,8	9,6	6	3,6	3,2	7,8	1	8	1	306060R	▲	▲	▲	
R108.0090.00	0,94	0,9	4,8	9,6	6	3,6	3,2	7,8	1	8	1	306060R	▲	▲	▲	
L108.0070.00	0,74	0,7	4,8	9,6	6	3,6	3,2	7,8	1	8	1	306060L	Δ	▲	▲	
L108.0080.00	0,84	0,8	4,8	9,6	6	3,6	3,2	7,8	1	8	1	306060L	Δ	Δ	▲	
L108.0090.00	0,94	0,9	4,8	9,6	6	3,6	3,2	7,8	1	8	1	306060L	Δ	▲	▲	
													P	●	●	●
													M	○	●	●
													K	○	●	●
													N	-	●	●
													S	-	●	●
													H	-	-	-

Profondeur de coupe limitée
Profondità di taglio limitata

B



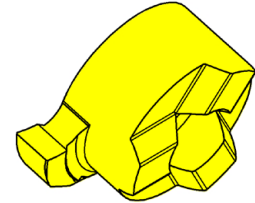
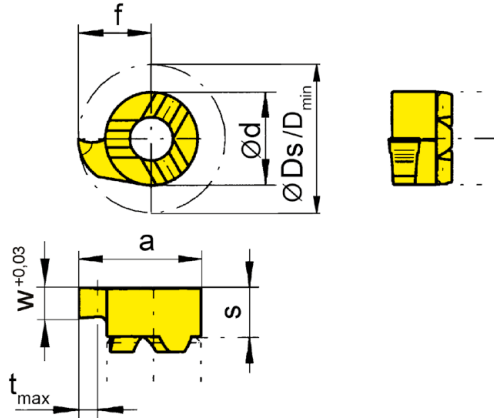
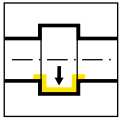
R = version à droite représentée
R = versione destra come in figura

L = version à gauche
L = versione sinistra a specchio

▲ en stock
a stock

Nuance
Leghe
Δ 4 semaines
4 settimane

N° de commande Codice prodotto	w	Nw	s	f	Ds	a	d	t _{max}	D _{min}	Z	HIS	MG12	EG55	TH35	TN35
R108.0110.00	1,19	1,1	3,2	4,8	9,6	7,8	6	1	8	1	306060R	▲	▲	▲	▲
R108.0130.00	1,39	1,3	3,2	4,8	9,6	7,8	6	1	8	1	306060R	▲	▲	▲	▲
R108.0160.00	1,69	1,6	3,2	4,8	9,6	7,8	6	1	8	1	306060R	▲	Δ	▲	▲
L108.0110.00	1,19	1,1	3,2	4,8	9,6	7,8	6	1	8	1	306060L	▲	Δ	▲	▲
L108.0130.00	1,39	1,3	3,2	4,8	9,6	7,8	6	1	8	1	306060L			Δ	▲
L108.0160.00	1,69	1,6	3,2	4,8	9,6	7,8	6	1	8	1	306060L			▲	Δ
P	o	•	•	•											
M	-	o	•	•											
K	-	o	•	•											
N	-	-	•	•											
S	-	-	•	•											
H	-	-	-	-											



R = version à droite représentée
R = versione destra come in figura

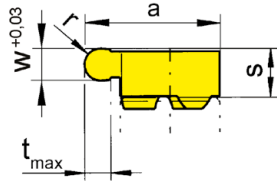
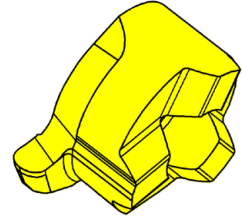
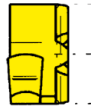
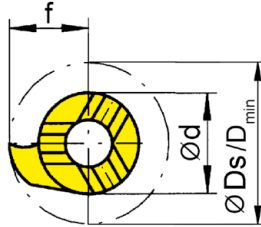
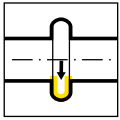
L = version à gauche
L = versione sinistra a specchio

▲ en stock
a stock

Nuance
Leghe
Δ 4 semaines
4 settimane

N° de commande Codice prodotto	w	s	f	Ds	a	d	t _{max}	D _{min}	Z	HIS	MG12	EG55	TH35	TN35
R108.0150.00	1,5	3,2	4,8	9,6	7,8	6	1	8	1	306060R	▲	▲	▲	▲
R108.0200.00	2	3,2	4,8	9,6	7,8	6	1	8	1	306060R	▲	▲	▲	▲
L108.0150.00	1,5	3,2	4,8	9,6	7,8	6	1	8	1	306060L	▲		Δ	▲
L108.0200.00	2	3,2	4,8	9,6	7,8	6	1	8	1	306060L	▲		▲	▲
P	o	•	•	•										
M	-	o	•	•										
K	-	o	•	•										
N	-	-	•	•										
S	-	-	•	•										
H	-	-	-	-										

B

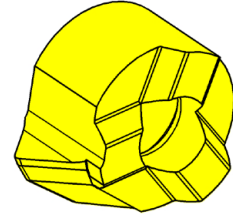
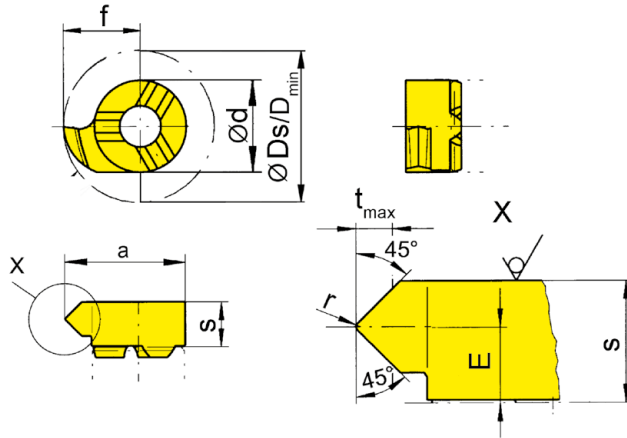
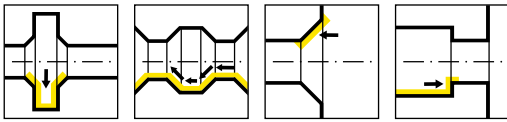


R = version à droite représentée
R = versione destra come in figura

L = version à gauche
L = versione sinistra a specchio

Nuance
Leghe
▲ en stock
a stock
Δ 4 semaines
4 settimane

Bestellnummer Part number	w	s	f	Ds	a	r	d	t _{max}	D _{min}	Z	HIS	MG12	EG55	TH35	TI25	TN35
R108.0004.08	0,8	3,2	4,8	9,6	7,8	0,4	6	1	8	1	306060R	▲	▲	▲		▲
R108.0006.12	1,2	3,2	4,8	9,6	7,8	0,6	6	1	8	1	306060R	▲	▲	▲		▲
R108.0009.18	1,8	3,2	4,8	9,6	7,8	0,9	6	1	8	1	306060R	▲	▲	▲	▲	▲
L108.0004.08	0,8	3,2	4,8	9,6	7,8	0,4	6	1	8	1	306060L	Δ	▲	▲		▲
L108.0006.12	1,2	3,2	4,8	9,6	7,8	0,6	6	1	8	1	306060L	▲	▲	▲		▲
L108.0009.18	1,8	3,2	4,8	9,6	7,8	0,9	6	1	8	1	306060L	Δ		▲	Δ	▲
P	o	•	•	•	•	•	•	•	•	•	•	•	•	•	•	•
M	-	o	•	•	•	•	•	•	•	•	•	•	•	•	•	•
K	-	o	•	•	•	•	•	•	•	•	•	•	•	•	•	•
N	-	-	•	•	•	•	•	•	•	•	•	•	•	•	•	•
S	-	-	•	•	•	•	•	•	•	•	•	•	•	•	•	•
H	-	-	-	-	-	-	-	-	-	-	-	-	-	-	-	-



R = version à droite représentée
R = versione destra come in figura

L = version à gauche
L = versione sinistra a specchio

Nuance
Leghe
▲ en stock
a stock
Δ 4 semaines
4 settimane

N° de commande Codice prodotto	E	f	Ds	r	d	s	a	D _{min}	α	t _{max}	Z	HIS	EG55	TA45	TI25	TN35
R108.4545.02	1,8	4,65	9,3	0,2	6	3,6	7,65	7,8	45°	1,4	1	306060R	▲	▲	▲	▲
L108.4545.02	1,8	4,65	9,3	0,2	6	3,6	7,65	7,8	45°	1,4	1	306060L	▲	Δ	Δ	▲
P	●	●	●	●	●	●	●	●	●	●	●	●	●	●	●	●
M	○	●	●	●	●	●	●	●	●	●	●	●	●	●	●	●
K	○	●	●	●	●	●	●	●	●	●	●	●	●	●	●	●
N	-	●	●	●	●	●	●	●	●	●	●	●	●	●	●	●
S	-	●	●	●	●	●	●	●	●	●	●	●	●	●	●	●
H	-	-	-	-	-	-	-	-	-	-	-	-	-	-	-	-

B

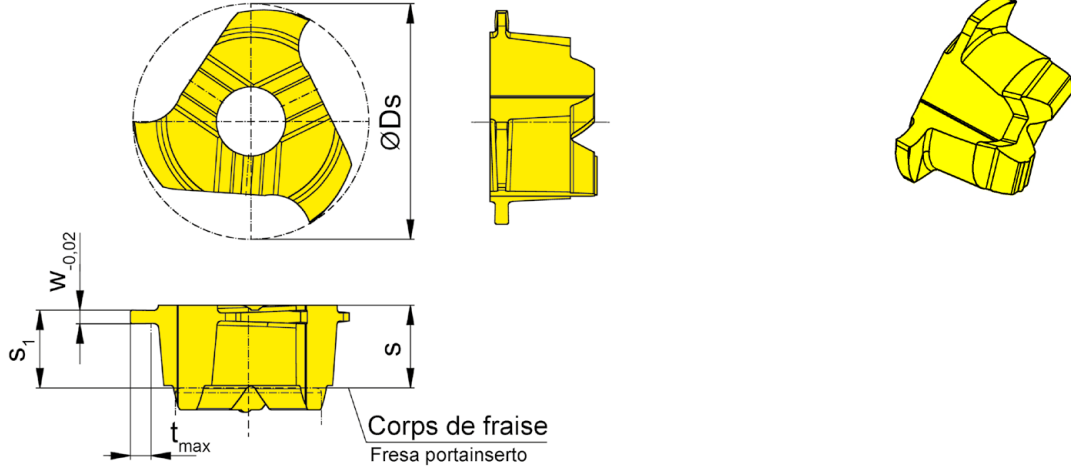
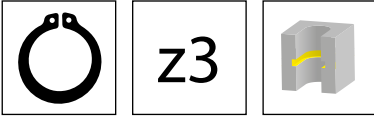


Illustration de coupe à droite représentée
Figura = taglio destro

▲ en stock
a stock

Δ 4 semaines
4 settimane

N° de commande Codice prodotto	Ds	Nw	w	s	s ₁	t _{max}	Z	HIS	TA45
306.0050.10.00	9,7	0,5	0,57	3,4	3,2	0,85	3	306060R	▲
306.0070.10.00	9,7	0,7	0,77	3,4	3,2	1,15	3	306060R	▲

Profondeur de coupe limitée
Profondità di taglio limitata

P	●
M	●
K	●
N	●
S	●
H	-

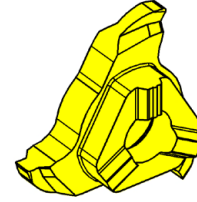
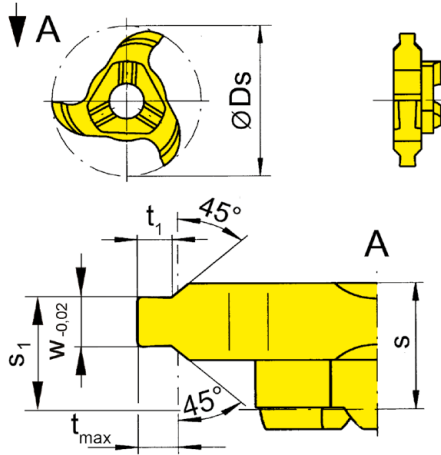


Illustration de coupe à droite représentée
Figura = taglio destro

Nuance
Leghe
▲ en stock
a stock
Δ 4 semaines
4 settimane

N° de commande Codice prodotto	Ds	Nw	w	t ₁	s	s ₁	t _{max}	Z	HIS	AS45
306.1105.30	11,7	1,1	1,21	0,47	3,4	2,7	0,5	3	306060R	▲
306.1307.30	11,7	1,3	1,41	0,65	3,4	2,6	0,7	3	306060R	▲
										P ●
										M ●
										K ●
										N o
										S ●
										H -

B

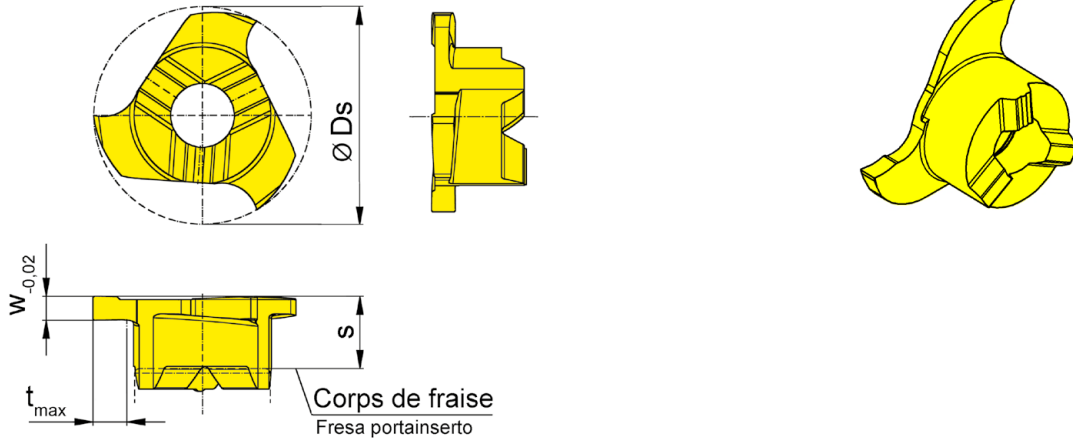
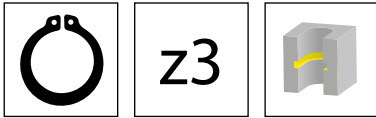


Illustration de coupe à droite représentée
Figura = taglio destro

Nuance
Leghe
▲ en stock
a stock
△ 4 semaines
4 settimane

N° de commande Codice prodotto	Ds	Nw	w	s	t _{max}	Z	HIS	Nuance Leghe	
								AS45	TA45
306.0080.10.00	9,7	0,8	0,87	3,2	1,5	3	306060R	▲	▲
306.0090.10.00	9,7	0,9	0,97	3,2	1,5	3	306060R	▲	▲
306.0100.10.00	9,7	1	1,07	3,2	1,5	3	306060R	▲	▲
306.0110.10.00	9,7	1,1	1,21	3,2	1,5	3	306060R	▲	▲
306.0130.10.00	9,7	1,3	1,41	3,2	1,5	3	306060R	▲	▲
306.0160.10.00	9,7	1,6	1,71	3,2	1,5	3	306060R	▲	▲
								P	● ●
								M	● ●
								K	● ●
								N	○ ●
								S	● ●
								H	- -

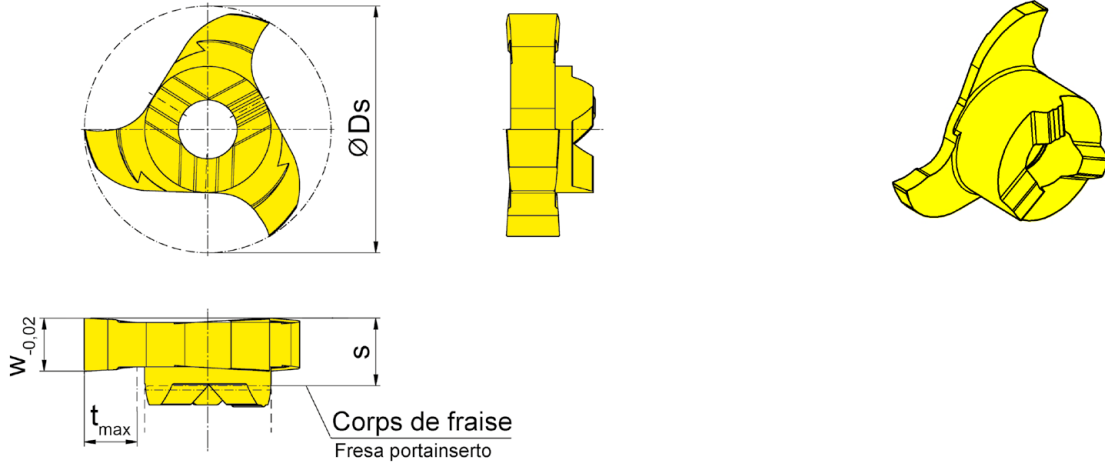
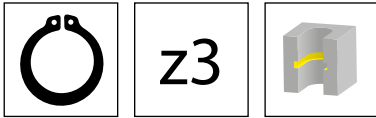


Illustration de coupe à droite représentée
Figura = taglio destro

▲ en stock
a stock

△ 4 semaines
4 settimane

Nuance
Leghe

N° de commande Codice prodotto	Ds	Nw	w	s	t _{max}	Z	HIS	MG12	TF45	TN35
306.0110.00	11,7	1,1	1,21	3,2	2,5	3	306060R	▲	▲	▲
306.0130.00	11,7	1,3	1,41	3,2	2,5	3	306060R	△	△	▲
306.0160.00	11,7	1,6	1,71	3,2	2,5	3	306060R	△	△	▲
								P	o	●
								M	-	●
								K	-	●
								N	-	●
								S	-	●
								H	-	-

B

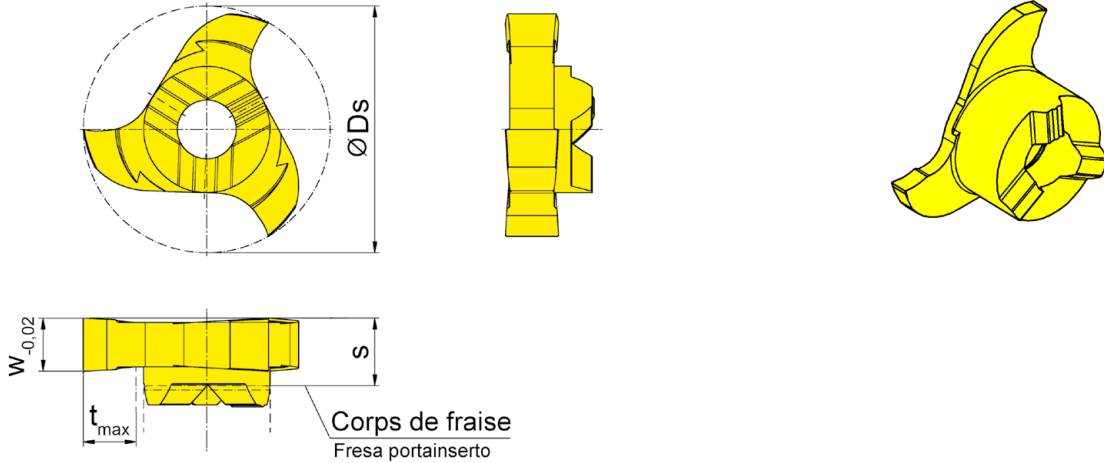
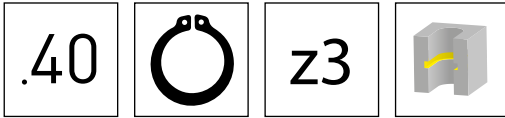
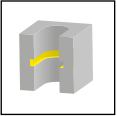


Illustration de coupe à droite représentée
Figura = taglio destro

Nuance
Leghe
▲ en stock
a stock
Δ 4 semaines
4 settimane

N° de commande Codice prodotto	Ds	Nw	w	s	t _{max}	Z	HIS	Ti25
306.0110.40	11,7	1,1	1,21	3,2	2,5	3	306060R	▲
306.0130.40	11,7	1,3	1,41	3,2	2,5	3	306060R	Δ
306.0160.40	11,7	1,6	1,71	3,2	2,5	3	306060R	▲
								P -
								M -
								K -
								N ●
								S -
								H -



z3

B

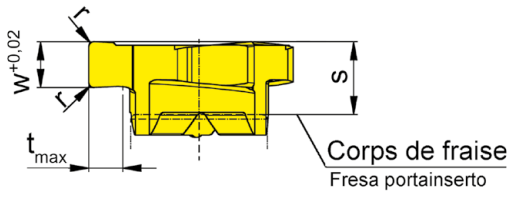
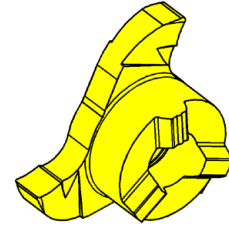
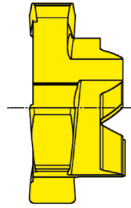
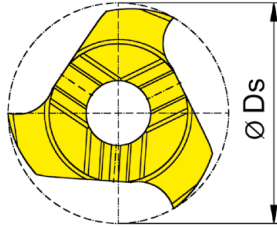


Illustration de coupe à droite représentée
Figura = taglio destro

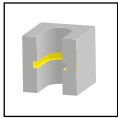
▲ en stock
a stock

▲ 4 semaines
4 settimane

Nuance
Leghe

N° de commande Codice prodotto	Ds	w	s	r	t _{max}	Z	HIS	Nuance Leghe	
								AS45	TA45
306.0150.10.00	9,7	1,5	3,2	-	1,5	3	306060R	▲	▲
306.0200.10.00	9,7	2	3,2	0,2	1,5	3	306060R	▲	▲
								P	● ●
								M	● ●
								K	● ●
								N	○ ●
								S	● ●
								H	- -

B



z3

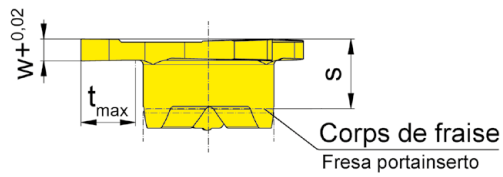
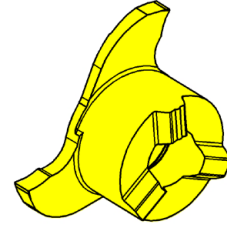
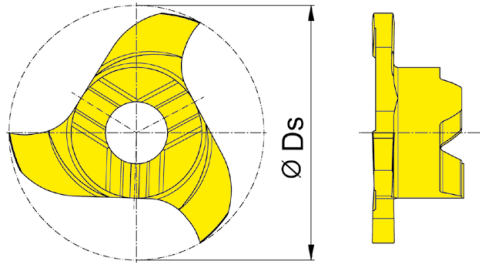


Illustration de coupe à droite représentée
Figura = taglio destro

▲ en stock
a stock

Δ 4 semaines
4 settimane

Nuance
Leghe

N° de commande Codice prodotto	Ds	w	s	r	t _{max}	Z	HIS	Nuance / Leghe				
								MG12	AS45	TF45	TN35	
306.0100.1.00	11,7	1	3,2	-	2,5	3	306060R				▲	
306.0150.00	11,7	1,5	3,2	-	2,5	3	306060R	▲	▲	▲	▲	
306.0150.02	11,7	1,5	3,2	0,2	2,5	3	306060R		▲			
306.0200.00	11,7	2	3,2	0,2	2,5	3	306060R	▲	▲	▲	▲	
306.0250.00	11,7	2,5	3,2	0,2	2,5	3	306060R	▲	▲	▲	▲	
306.0300.00	11,7	3	4,2	0,2	2,5	3	306060R		▲		▲	
								P	o	•	•	•
								M	-	•	•	•
								K	-	•	•	•
								N	-	o	•	•
								S	-	•	•	•
								H	-	-	-	-

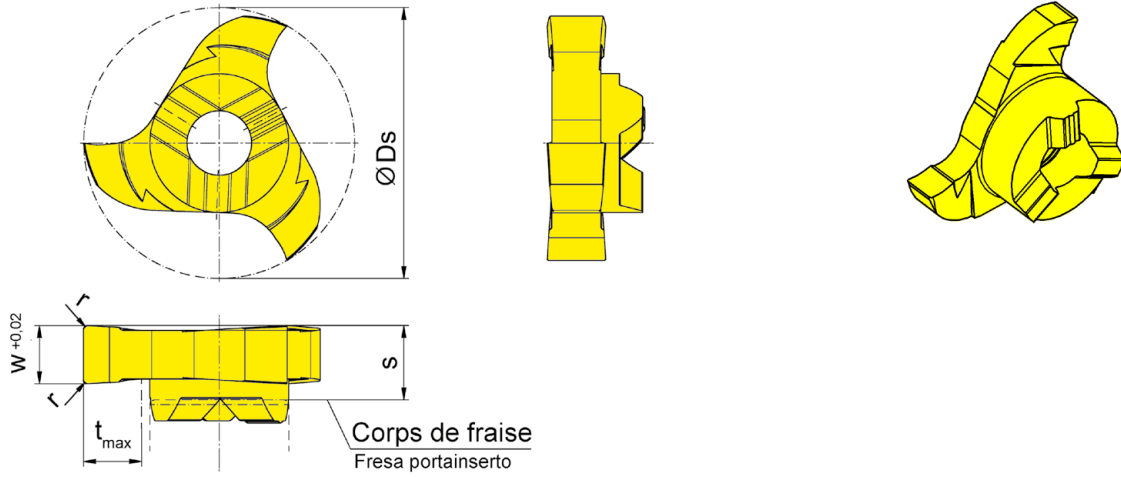


Illustration de coupe à droite représentée
Figura = taglio destro

Nuance
Leghe
▲ en stock
a stock
Δ 4 semaines
4 settimane

N° de commande Codice prodotto	Ds	w	s	r	t _{max}	Z	HIS	Ti25
306.0150.40	11,7	1,5	3,2	-	2,5	3	306060R	▲
306.0200.40	11,7	2	3,2	0,2	2,5	3	306060R	▲
306.0250.40	11,7	2,5	3,2	0,2	2,5	3	306060R	▲
								P -
								M -
								K -
								N ●
								S -
								H -

B

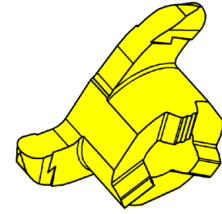
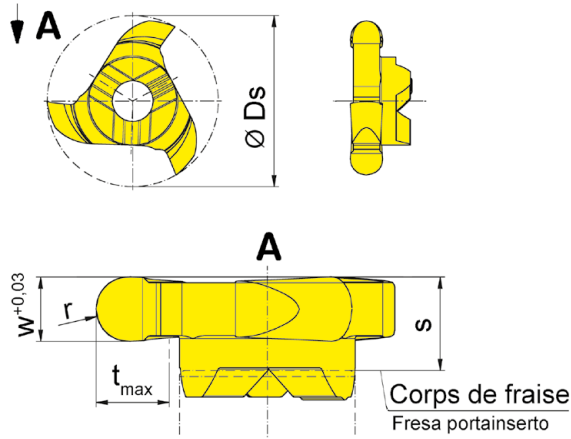
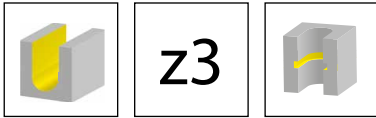


Illustration de coupe à droite représentée
Figura = taglio destro

Nuance
Leghe
▲ en stock
a stock
Δ 4 semaines
4 settimane

N° de commande Codice prodotto	Ds	w	s	r	t _{max}	Z	HIS	Nuance / Leghe							
								MG12	AN25	AS45	RC45	TF45	TI25	TN35	
306.0005.10	11,7	1	3,2	0,5	2,5	3	306060R		▲		▲				
306.0007.15	11,7	1,5	3,2	0,75	2,5	3	306060R			▲					
306.0010.20	11,7	2	3,2	1	2,5	3	306060R			▲					
306.0011.22	11,7	2,2	3,2	1,1	2,5	3	306060R	Δ		▲		Δ	▲	▲	
306.0015.30	11,7	3	4,2	1,5	2,5	3	306060R			▲					
								P	o	•	•	•	•	•	•
								M	-	o	•	•	•	•	•
								K	-	-	•	•	•	•	•
								N	-	-	o	-	•	•	•
								S	-	-	•	-	•	•	•
								H	-	-	-	-	-	-	-

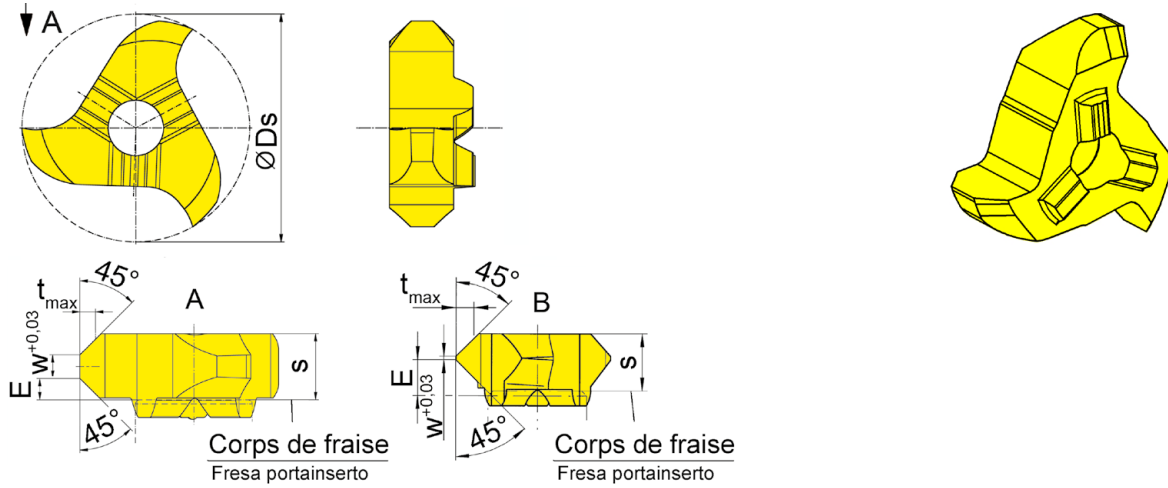


Illustration de coupe à droite représentée
Figura = taglio destro

Nuance
Leghe
▲ en stock
a stock
Δ 4 semaines
4 settimane

N° de commande Codice prodotto	Ds	E	s	w	Forme Forma	t_{max}	Z	HIS	MG12	TF45	TI25	TN35
306.4545.00	11,7	1,1	3,4	1,2	A	0,8	3	306060R	▲	▲	▲	▲
306.4593.20	9,3	1,6	3,4	0,2	B	1,4	3	306060R			▲	
									P	o	•	•
									M	-	•	•
									K	-	•	•
									N	-	•	•
									S	-	•	•
									H	-	-	-

B

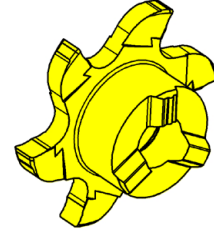
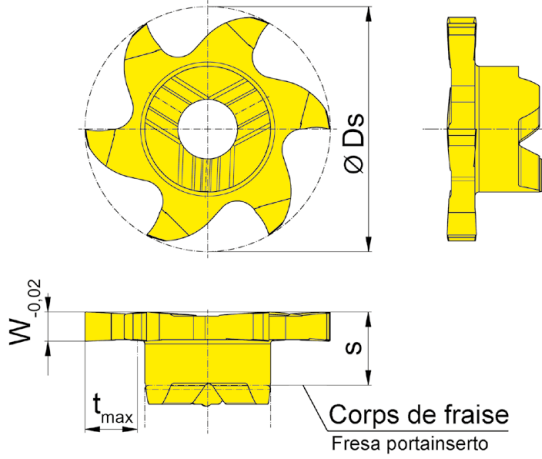
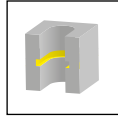
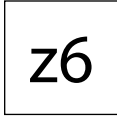
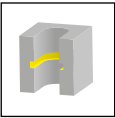


Illustration de coupe à droite représentée
Figura = taglio destro

▲ en stock
a stock

Nuance
Leghe
Δ 4 semaines
4 settimane

N° de commande Codice prodotto	Ds	Nw	w	s	t _{max}	Z	HIS	Nuance Leghe	
								AS45	TA45
606.0110.00	11,7	1,1	1,21	3,5	2,5	6	306060R		▲
606.0130.00	11,7	1,3	1,41	3,5	2,5	6	306060R		▲
606.0160.00	11,7	1,6	1,71	3,5	2,5	6	306060R	▲	▲
								P	● ●
								M	● ●
								K	● ●
								N	○ ●
								S	● ●
								H	- -



z6

B

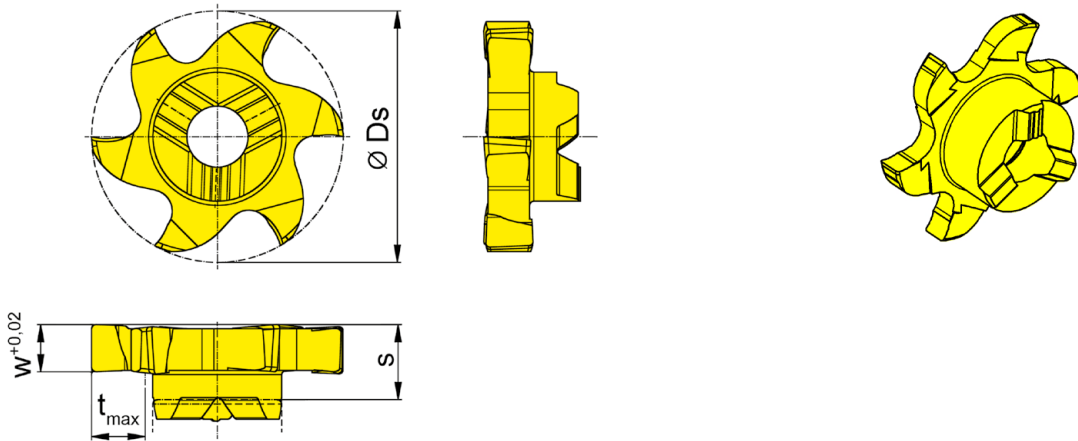


Illustration de coupe à droite représentée
Figura = taglio destro

Nuance
Leghe

▲ en stock
a stock

△ 4 semaines
4 settimane

N° de commande Codice prodotto	D _s	w	s	t _{max}	Z	HIS	Nuance Leghe			
							AS45	EG35	IG35	TA45
606.0025.00	11,7	0,25	3,5	2,5	6	306060R		▲	△	
606.0030.00	11,7	0,3	3,5	2,5	6	306060R		▲	△	
606.0040.00	11,7	0,4	3,5	2,5	6	306060R		▲	△	
606.0050.00	11,7	0,5	3,5	2,5	6	306060R		▲	△	
606.0060.00	11,7	0,6	3,5	2,5	6	306060R		▲	△	
606.0070.00	11,7	0,7	3,5	2,5	6	306060R		▲	△	
606.0080.00	11,7	0,8	3,5	2,5	6	306060R		▲	△	
606.0090.00	11,7	0,9	3,5	2,5	6	306060R		▲	△	
606.0100.00	11,7	1	3,5	2,5	6	306060R		▲	△	
606.0150.00	11,7	1,5	3,5	2,5	6	306060R	▲			▲
606.0200.00	11,7	2	3,5	2,5	6	306060R	▲			▲
606.0250.00	11,7	2,5	3,5	2,5	6	306060R	▲			▲
P	●	●	-	●						
M	●	●	●	●						
K	●	○	-	●						
N	○	-	-	●						
S	●	-	●	●						
H	-	-	-	-						

B

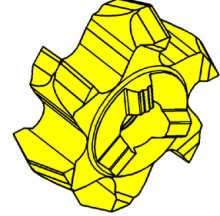
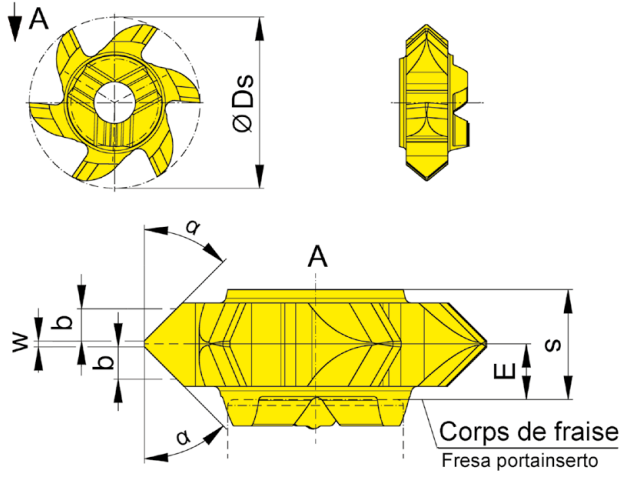
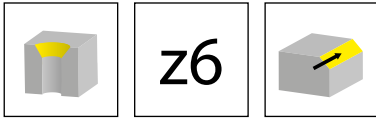


Illustration de coupe à droite représentée
Figura = taglio destro

Nuance
Leghe
▲ en stock
a stock
Δ 4 semaines
4 settimane

N° de commande Codice prodotto	Ds	E	s	w	a	b	Z	HIS	TA45
606.1515.20	11,7	1,9	3,7	0,2	15°	1,5	6	306060R	Δ
606.2020.20	11,7	1,9	3,7	0,2	20°	1,5	6	306060R	▲
606.3030.20	11,7	1,9	3,7	0,2	30°	1,5	6	306060R	▲
606.4545.20	11,7	1,9	3,7	0,2	45°	1,1	6	306060R	▲
									P ●
									M ●
									K ●
									N ●
									S ●
									H -

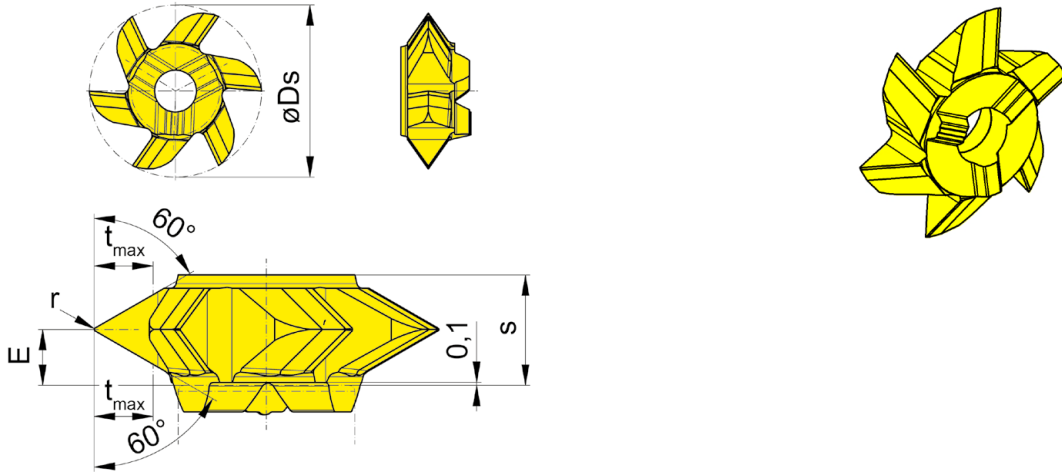
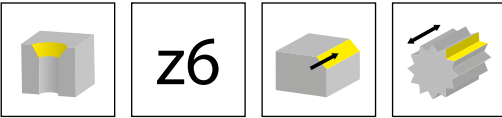


Illustration de coupe à droite représentée
Figura = taglio destro

Nuance
Leghe
▲ en stock
a stock
Δ 4 semaines
4 settimane

N° de commande Codice prodotto	Ds	E	s	t _{max}	Z	HIS	AS45
606.6060.05	11,7	1,9	3,75	2	6	306060R	▲
							P ●
							M ●
							K ●
							N ○
							S ●
							H -

B

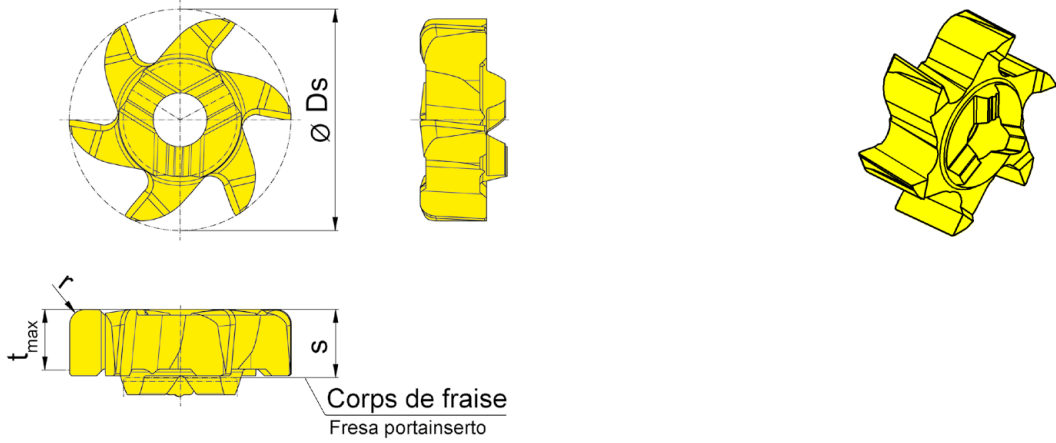
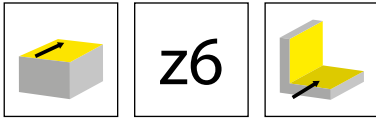


Illustration de coupe à droite représentée
Figura = taglio destro

Nuance
Leghe
▲ en stock
a stock
Δ 4 semaines
4 settimane

N° de commande Codice prodotto	Ds	Z	r	t _{max}	s	HIS	Nuance Leghe	
							AS45	TI25
606.PLT6.08	11,7	6	0,8	3,2	3,6	306060R	▲	▲
							P ● ●	● ●
							M ● ●	● ●
							K ● ●	● ●
							N ○ ●	● ●
							S ● ●	● ●
							H - -	- -

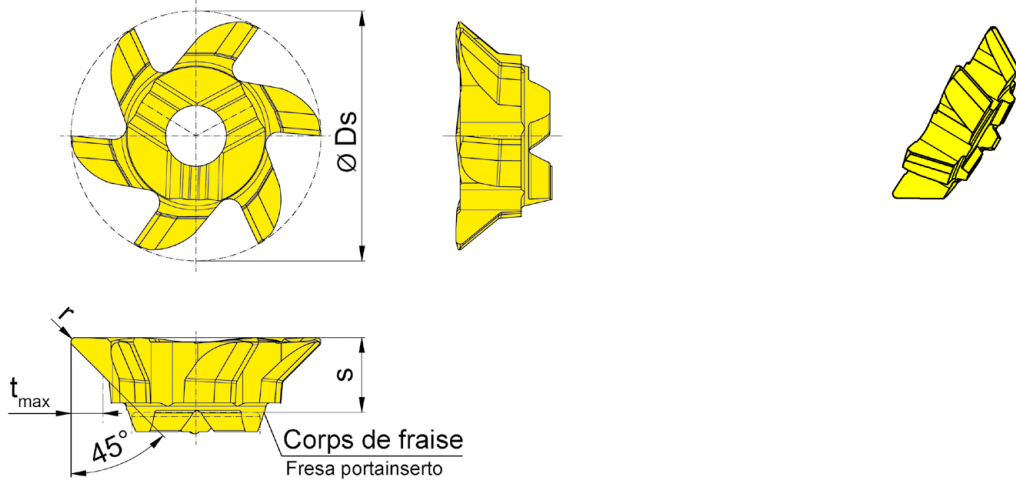
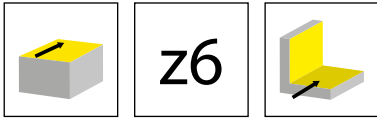


Illustration de coupe à droite représentée
Figura = taglio destro

Nuance
Leghe
▲ en stock
a stock
Δ 4 semaines
4 settimane

N° de commande Codice prodotto	Ds	Z	r	α	t_{max}	s	HIS	AS45
606.0015.22	11,7	6	0,2	15°	0,7	3,5	306060R	▲
606.0030.22	11,7	6	0,2	30°	1,4	3,5	306060R	▲
606.0045.22	11,7	6	0,2	45°	1,5	3,5	306060R	▲
								P ●
								M ●
								K ●
								N o
								S ●
								H -

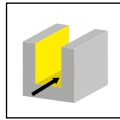
Fraisage de gorge par interpolation circ.

Fresatura di gole per interpolazione circolare



B

Corps de fraise
Corpo fresa
M308/M308.ST/M308.ER

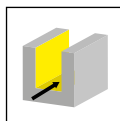


Page/Pag.
68-71

Base de support
Attacco Base
WFB

Page/Pag.
72

Corps de fraise vissé
Fresa avvitabile
M308.M

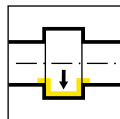


Page/Pag.
73

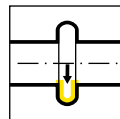
Plaquette
Inserto
111/308/608



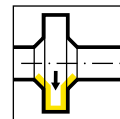
Page/Pag.
74-75, 79-81



Page/Pag.
76



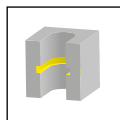
Page/Pag.
77



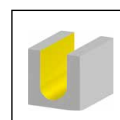
Page/Pag.
78



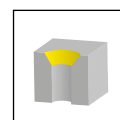
Page/Pag.
81, 83



Page/Pag.
82, 86



Page/Pag.
84



Page/Pag.
85, 87