

PINZE DI SERRAGGIO



GERC– PINZE DI SERRAGGIO DI ALTA PRECISIONE



L'ossidazione delle pinze portautensili accorcia la vita dei vostri utensili e comporta inoltre una perdita in termini di precisione. Per questa ragione abbiamo progettato FAHRION|Protect: una tecnologia all'avanguardia che protegge a lungo le pinze portautensili dalla corrosione.

- La geometria originale tra la pinza portautensile e la sede conica nel mandrino portapezzo si mantiene protetto a lungo dalle irregolarità dovute alla corrosione.
- Aumenta il numero di pezzi entro le tolleranze previste con conseguente riduzione del numero dei pezzi difettosi.
- Potete mantenere i processi di produzione ad alti livelli, risparmiare tempo e garantire tempi di consegna più stretti.
- Una maggiore concentricità prolunga la durata degli utensili e potete risparmiare su tempi e costi con un minore magazzino utensili.
- Le pinze portautensile devono essere cambiate meno frequentemente e quindi possono essere impiegate più a lungo per applicazioni di precisione.



Con e senza FAHRION|Protect dopo quattro mesi di impiego normale

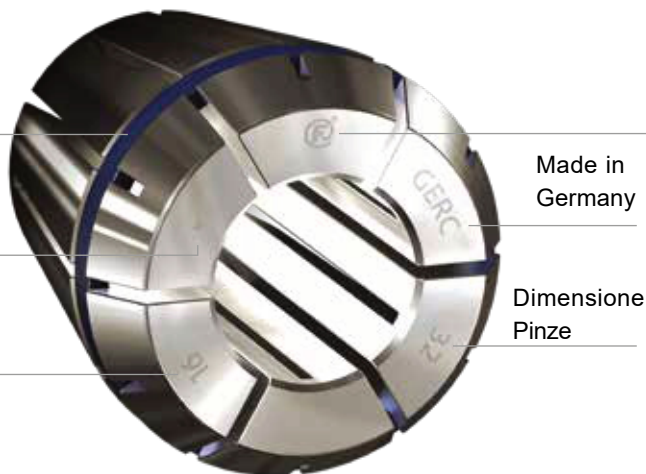


La figura mostra le performance e le caratteristiche delle pinze FAHRION

Anello blu =
Alta precisione
Indicazione di precisione
per le pinze da 2 µm

Nr. di Serie

Diametro del foro



Made in
Germany

Dimensione
Pinze

Il marchio FAHRION di
qualità garantita

Maggiore durata dell'utensile, costi
tempi di preparazione ridotti
= Costi di produzione ridotti
= Migliore qualità della superficie e
tolleranze di produzione ridotte
= Migliore qualità

I vantaggi delle pinze di serraggio FAHRION DIN ISO 15488 - GERC-Be GERC-HP(ER/ESX)

FAHRION ha la più ampia scelta di
forme e tipi: per differenti impieghi
delle pinze di serraggio DIN ISO 15488
(ER/ESX).

Preciso

Le pinze di serraggio di precisione
FAHRION DIN ISO 15488-B (ER/ESX)
elevano lo standard in fatto di concen-
tricità e ripetibilità, che negli articoli
da GERC11-Ba GERC40-B è di 5 µm
e negli articoli da GERC11-HPa
GERC40-HP di 2 µm.

Stabilità

Sono sufficienti solo 12 spacchi per
ottenere un bloccaggio efficiente e si-

curo sul diametro nominale delle pinze
DIN ISO 15488. Ciò è possibile grazie
ad un acciaio prodotto appositamente
per noi e ad uno specifico trattamento
termico. Rispetto alle pinze di ser-
raggio con 16 spacchi le nostre pinze
di serraggio presentano una minor
capacità al bloccaggio quando sono
„collassate“ al valore minimo del campo
di ciascuna di esse.

Rispetta le superfici

Gli angoli non sono semplicemente
sbavati, ma anche arrotondati, per
proteggere il cono interno del por-
tautensile a pinze da possibili segni.
Questi punti costituiscono il presup-

posto per la garanzia di una concen-
tricità sempre elevata.

Elevata tenuta e rigidità, elevato
fattore di portanza, notevole concen-
tricità del sistema ed alta resistenza
alla corrosione con GERC-Be GERC-HP
grazie alla versione superrifinita con
FAHRION|Protect!



Non solo sono sbavate
le fessure su tutti i lati,
ma anche la superficie $Rz \leq 1,6 \mu m$

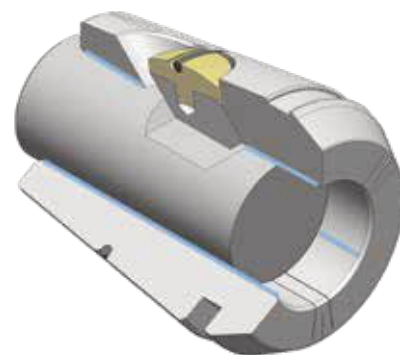
LE PINZE CON TASSELLO GERC-W

Per una sicurezza senza compromessi in fresatura



Non più rischi di sfilamento dell'utensile o microderive. 100% garantito. La soluzione è semplice e ingegnosa. Si tratta di un tassello integrato nella pinza che agisce sul piatto Weldon dell'utensile, bloccandolo.

Al serraggio, il tassello si posiziona sempre contro il fianco del piatto Weldon e, in tal maniera, crea un bloccaggio senza la minima deviazione radiale. Il gambo dell'utensile è preso lungo tre linee, garantendone il posizionamento perfetto anche con grandi forze di taglio (con gambi tolleranze fino a h9).

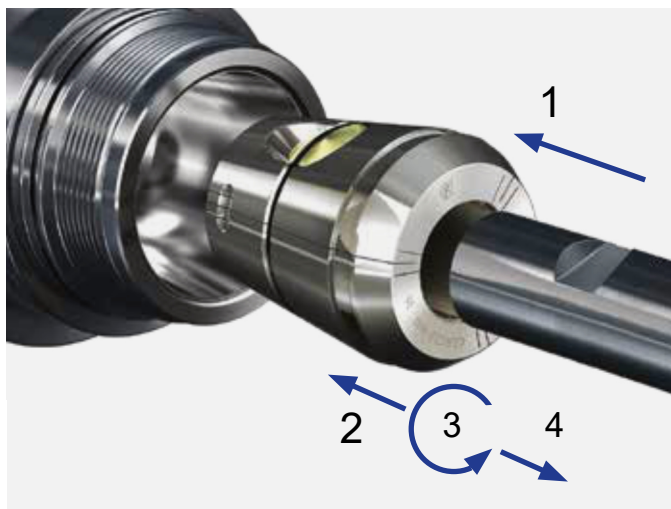


Le tre linee di bloccaggio dell'utensile (colore blu) centrano l'utensile e generano una forza di serraggio superlativa, unitamente alla migliore concentricità.

Facile manipolazione

Per il montaggio, occorre solamente inserire l'utensile (1) fino a che il tassello si accoppi con il piatto.

Per lo smontaggio, occorre spingere l'utensile indietro (2), ruotarlo (3) ed estrarlo (4).



La molla posteriore è posizionata nell'apposito alloggiamento. La molla applica una pressione assiale sull'utensile per mantenere in contatto il tassello sul fianco del piatto Weldon.








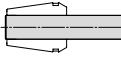
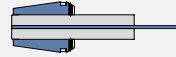
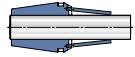
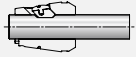
Bloccaggio ottimale

Si raggiunge il meglio del bloccaggio, quando si usano congiuntamente le pinze con tassello GERC-Wedi mandrini UPC Ultra Power. Si riducono notevolmente le vibrazioni, proteggendo i cuscinetti del mandrino della macchina utensile.

Maggiore vita utensile






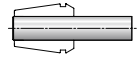
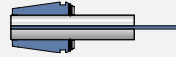
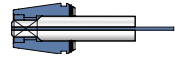
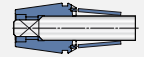
La miglior concentricità assicura una maggior durata dei vostri utensili. Migliorerete quindi il vostro risparmio sugli utensili.

IL TOP ASSOLUTO DELLA GAMMA

Caratteristiche delle pinze DIN ISO 15488 GERC-HP,GERC-HPD,GERC-HPDD,GERC-W 				
Forme/applicazioni	GERC-HP	GERC-HPD	GERC-HPDD	GERC-W
				
	Standard	A tenuta	A tenuta e fori	Prevenzione sfilamento
				
Mandrini portapinze convenzionale	<input checked="" type="checkbox"/>	<input checked="" type="checkbox"/>	<input checked="" type="checkbox"/>	<input type="checkbox"/>
Mandrini portapinze di precisione CENTRO P	<input type="checkbox"/>	<input type="checkbox"/>	<input type="checkbox"/>	<input checked="" type="checkbox"/>
Mandrini Mini Precision MPC	<input type="checkbox"/>	<input type="checkbox"/>	<input type="checkbox"/>	<input type="checkbox"/>
Mandrini Dynamic Power DPC	<input type="checkbox"/>	<input type="checkbox"/>	<input type="checkbox"/>	<input checked="" type="checkbox"/>
Mandrini Ultra Power UPC	<input type="checkbox"/>	<input type="checkbox"/>	<input type="checkbox"/>	<input checked="" type="checkbox"/>
Mandrini Full Performance FPC	<input type="checkbox"/>	<input type="checkbox"/>	<input type="checkbox"/>	<input checked="" type="checkbox"/>
Mandrini Adjustable Finishing AFC	<input type="checkbox"/>	<input type="checkbox"/>	<input type="checkbox"/>	<input type="checkbox"/>
Concentricità, esempio Ø 12.0 mm	2 µm	2 µm	2 µm	3 µm
Ripetibilità	2 µm	2 µm	2 µm	3 µm
Tolleranza del gambo utensile	h10	h8	h8	h8
Refrigerazione interna	<input type="checkbox"/>	<input checked="" type="checkbox"/>	<input type="checkbox"/>	<input type="checkbox"/>

Uso: consigliato limitato sconsigliato

FLESSIBILE E PRECISO

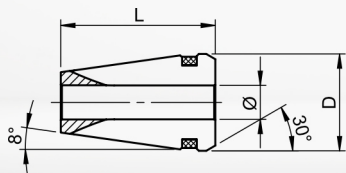
Caratteristiche delle pinze DIN ISO 15488 GERC-B,GERC-BD,GERC-GBD,GERC-GBDD 				
Forme/applicazioni	GERC-B	GERC-BD	GERC-GBD	GERC-GBDD
				
	Standard	A tenuta	A tenuta per maschio	A tenuta e fori per maschio
				
Mandrini portapinze convenzionale	■	■	■	■
Mandrini portapinze di precisione CENTRO P	▣	▣	■	■
Mandrini Mini Precision MPC	▣	▣	▣	▣
Mandrini Dynamic Power DPC	▣	▣	■	■
Mandrini Ultra Power UPC	▣	▣	■	■
Mandrini Full Performance FPC	▣	▣	■	■
Mandrini Adjustable Finishing AFC	□	□	□	□
Concentricità, esempio Ø 12.0 mm	5 µm	5 µm	10 µm	10 µm
Ripetibilità	3 µm	3 µm	5 µm	5 µm
Tolleranza del gambo utensile	h10	h8	h8	h8
Refrigerazione interna	□	■	■	□

Uso: ■ consigliato ▣ limitato □ sconsigliato

GERC8
1-5 mm

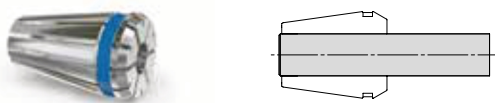
ACCESSORI PER MANDRINI
MPC8

Pinze di serraggio di alta precisione 5 µm

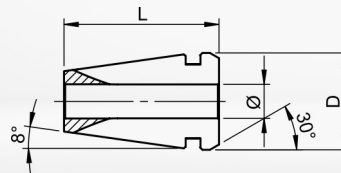


GERC8-HPØ 1-5 mm

Standard

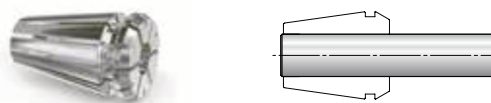


Pinze di serraggio di precisione 10 µm



GERC8-BØ 1-5 mm

Standard



☒ = 5 µm
D = 8,5
L = 13,6

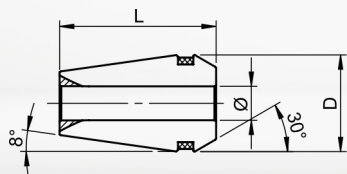
☒ = 10 µm
D = 8,5
L = 13,6

Ø mm	Cod. art.	Ø pollice	Cod. art.	Ø mm	Cod. art.	Ø pollice	Cod. art.
1,0	13610010100	1/16"	13610040159	1,0	13710010100	1/16"	13710040159
1,5	13610010150	1/8"	13610040318	1,5	13710010150	1/8"	13710040318
2,0	13610010200	3/16"	13610040476	2,0	13710010200	3/16"	13710040476
2,5	13610010250			2,5	13710010250		
3,0	13610010300			3,0	13710010300		
3,5	13610010350			3,5	13710010350		
4,0	13610010400			4,0	13710010400		
4,5	13610010450			4,5	13710010450		
5,0	13610010500			5,0	13710010500		

GERC8-B Set

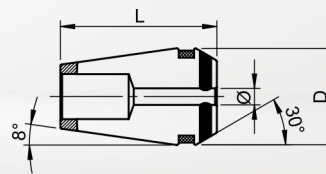
Contenuto set (Ø mm)	Cod. art.	Set
1,0-5,0/ 0,5 in aumento	1371016	9pezzi

Pinze di serraggio di alta precisione 2 µm



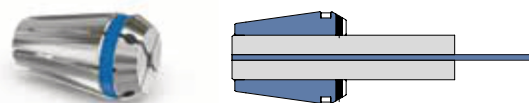
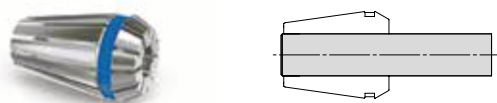
GERC11-HPØ 1-7 mm

Standard



GERC11-HPDØ 3-6 mm

A tenuta refrigerante



$\square =$ 2 µm
 D = 11,3
 L = 18

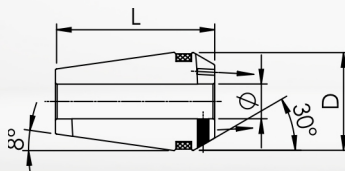
$\square =$ 2 µm
 D = 11,3
 L = 18

Ø mm	Cod. art.	Ø pollice	Cod. art.	Ø mm	Cod. art.	Ø pollice	Cod. art.
1,0	13611010100	1/16"	13611040159	3,0	13621010300	1/8"	13621040318
1,5	13611010150	3/32"	13611040238	4,0	13621010400	3/16"	13621040476
2,0	13611010200	1/8"	13611040318	5,0	13621010500	1/4"	13621040635
2,5	13611010250	5/32"	13611040397	6,0	13621010600		
3,0	13611010300	3/16"	13611040476				
3,5	13611010350	7/32"	13611040556				
4,0	13611010400	1/4"	13611040635				
4,5	13611010450						
5,0	13611010500						
5,5	13611010550						
6,0	13611010600						
6,5	13611010650						
7,0	13611010700						

GERC11
1-7 mm

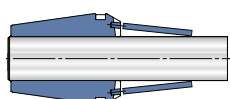
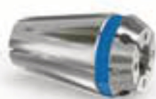
ACCESSORI PER MANDRINI
MPC11

Pinze di serraggio di alta precisione 2 µm



GERC11-HPDDØ 3-6 mm

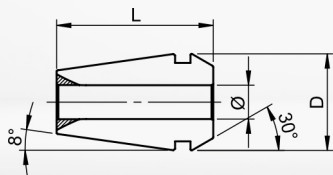
A tenuta refrigerante e fori



☒ =	2 µm
D =	11,3
L =	18

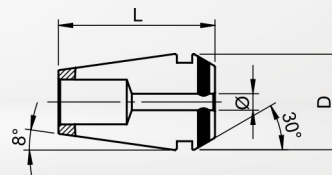
Ø mm	Cod. art.	Ø pollice	Cod. art.
3,0	13631010300	1/8"	13631040318
4,0	13631010400	3/16"	13631040476
6,0	13631010600	1/4"	13631040635

Pinze di serraggio di precisione 5 µm



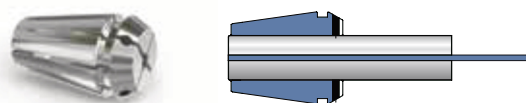
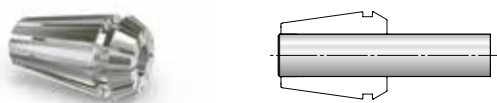
GERC11-BØ 1-7 mm

Standard



GERC11-BDØ 3-6 mm

A tenuta refrigerante



$\square =$ 5 µm
 D = 11,3
 L = 18

$\square =$ 5 µm
 D = 11,3
 L = 18

Ø mm	Cod. art.	Ø pollice	Cod. art.	Ø mm	Cod. art.	Ø pollice	Cod. art.
1,0	13711010100	1/16"	13711040159	3,0	13721010300	1/8"	13721040318
1,5	13711010150	3/32"	13711040238	4,0	13721010400	3/16"	13721040476
2,0	13711010200	1/8"	13711040318	5,0	13721010500	1/4"	13721040635
2,5	13711010250	5/32"	13711040397	6,0	13721010600		
3,0	13711010300	3/16"	13711040476				
3,5	13711010350	7/32"	13711040556				
4,0	13711010400	1/4"	13711040635				
4,5	13711010450						
5,0	13711010500						
5,5	13711010550						
6,0	13711010600						
6,5	13711010650						
7,0	13711010700						

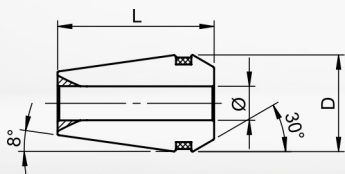
GERC11-B Set

Contenuto set (Ø mm)	Cod. art.	Set
1,0-7,0/ 0,5 in aumento	1371116	13pezzi

GERC16 1-10 mm

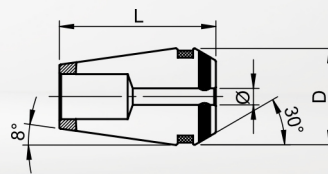
ACCESSORI PER MANDRINI MPC16 | DPC16

Pinze di serraggio di alta precisione 2 µm



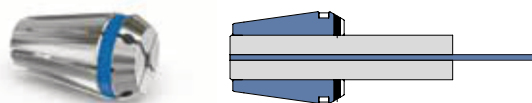
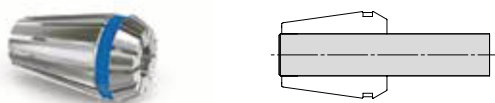
GERC16-HPØ 1-10 mm

Standard



GERC16-HPDØ 3-10 mm

A tenuta refrigerante



□ = 2 µm
D = 17
L = 27,5

□ = 2 µm
D = 17
L = 27,5

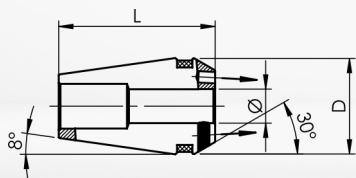
Ø mm	Cod. art.	Ø mm	Cod. art.	Ø mm	Cod. art.	Ø pollice	Cod. art.
1,0	13613010100	4,5	13613010450	3,0	13623010300	1/8"	13623040318
1,1	13613010110	5,0	13613010500	4,0	13623010400	5/32"	13623040397
1,2	13613010120	5,5	13613010550	5,0	13623010500	3/16"	13623040476
1,3	13613010130	5,6	13613010560	6,0	13623010600	7/32"	13623040556
1,4	13613010140	6,0	13613010600	7,0	13623010700	1/4"	13623040635
1,5	13613010150	6,3	13613010630	8,0	13623010800	9/32"	13623040714
1,6	13613010160	6,5	13613010650	9,0	13623010900	5/16"	13623040794
1,7	13613010170	7,0	13613010700	10,0	13623011000	11/32"	13623040873
1,8	13613010180	7,1	13613010710			3/8"	13623040953
1,9	13613010190	7,5	13613010750			13/32"	13623041032
2,0	13613010200	8,0	13613010800				
2,1	13613010210	8,5	13613010850				
2,2	13613010220	9,0	13613010900				
2,3	13613010230	9,5	13613010950				
2,4	13613010240	10,0	13613011000				
2,5	13613010250						
2,6	13613010260						
2,7	13613010270	Ø pollice	Cod. art.				
2,8	13613010280	1/16"	13613040159				
2,9	13613010290	3/32"	13613040238				
3,0	13613010300	1/8"	13613040318				
3,1	13613010310	5/32"	13613040397				
3,2	13613010320	3/16"	13613040476				
3,3	13613010330	7/32"	13613040556				
3,4	13613010340	1/4"	13613040635				
3,5	13613010350	9/32"	13613040714				
3,6	13613010360	5/16"	13613040794				
3,7	13613010370	11/32"	13613040873				
3,8	13613010380	3/8"	13613040953				
4,0	13613010400						

GERC16-HP Set

GERC16-HPD Set

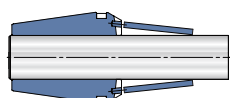
Contenuto set (Ø mm)	Cod. art.	Set	Contenuto set (Ø mm)	Cod. art.	Set
3,0•4,0•5,0•6,0•8,0•10,0	13613160060	6pezzi	3,0•4,0•5,0•6,0•8,0•10,0	13623160060	6pezzi

Pinze di serraggio di alta precisione 2 µm



GERC16-HPDDØ 3-10 mm

A tenuta refrigerante e fori

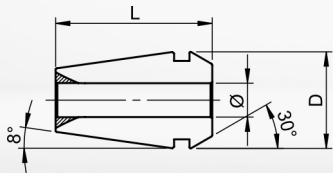


☒ =		2 µm	
D =		17	
L =		27,5	
Ø mm	Cod. art.	Ø pollice	Cod. art.
3,0	13633010300	1/8"	13633040318
4,0	13633010400	3/16"	13633040476
6,0	13633010600	1/4"	13633040635
8,0	13633010800	5/16"	13633040794
10,0	13633011000	3/8"	13633040953

GERC16 1-10 mm

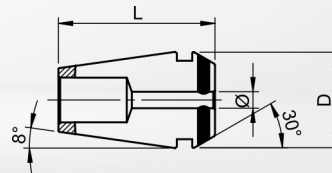
ACCESSORI PER MANDRINI MPC16 | DPC16

Pinze di serraggio di precisione 5 µm



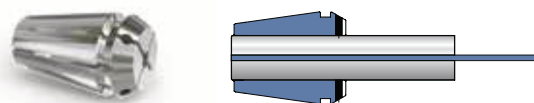
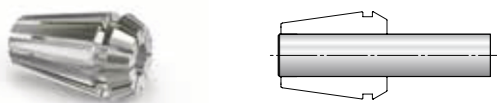
GERC16-BØ 1-10 mm

Standard



GERC16-BDØ 3-10 mm

A tenuta refrigerante



☒ = 5 µm
D = 17
L = 27,5

☒ = 5 µm
D = 17
L = 27,5

Ø mm	Cod. art.	Ø pollice	Cod. art.	Ø mm	Cod. art.	Ø pollice	Cod. art.
1,0	13713010100	1/16"	13713040159	3,0	13723010300	1/8"	13723040318
1,5	13713010150	3/32"	13713040238	4,0	13723010400	3/16"	13723040476
2,0	13713010200	1/8"	13713040318	5,0	13723010500	1/4"	13723040635
2,5	13713010250	5/32"	13713040397	6,0	13723010600	5/16"	13723040794
3,0	13713010300	3/16"	13713040476	7,0	13723010700	3/8"	13723040953
3,5	13713010350	7/32"	13713040556	8,0	13723010800		
4,0	13713010400	1/4"	13713040635	9,0	13723010900		
4,5	13713010450	9/32"	13713040714	10,0	13723011000		
5,0	13713010500	5/16"	13713040794				
5,5	13713010550	11/32"	13713040873				
6,0	13713010600	3/8"	13713040953				
6,5	13713010650	13/32"	13713041032				
7,0	13713010700						
7,5	13713010750						
8,0	13713010800						
8,5	13713010850						
9,0	13713010900						
9,5	13713010950						
10,0	13713011000						

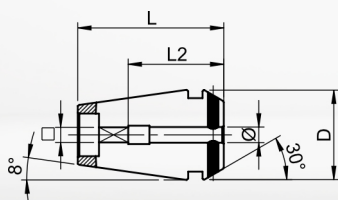
GERC16-B Set

Contenuto set (Ø mm)	Cod. art.	Set
1,0-10,0/ 1,0 in aumento	1371316	10pezzi

GERC16-BD Set

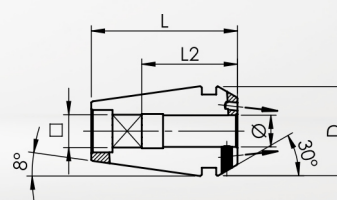
Contenuto set (Ø mm)	Cod. art.	Set
3,0•4,0•5,0•6,0•8,0•10,0	13723160060	6pezzi

Pinze di serraggio port amaschi 10 µm



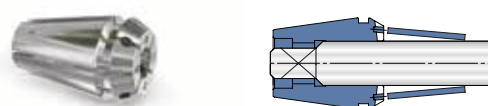
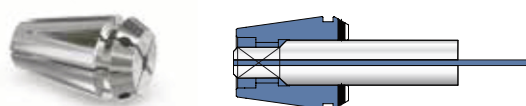
GERC16-GBDØ 2,8-9 mm

A tenuta refrigerante



GERC16-GBDDØ 3,5-9 mm

A tenuta refrigerante e fori



☐ = 10 µm
D = 17
L = 27,5

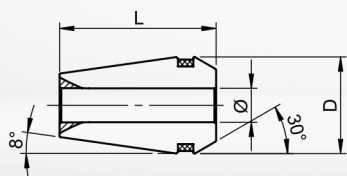
☐ = 10 µm
D = 17
L = 27,5

Ø/ ☐ mm	L2	Cod. art.	Ø/ ☐ mm	L2	Cod. art.
2,8/2,1	18	13823010280	3,5/2,7	18	13833010350
3,5/2,7	18	13823010350	4,5/3,55	18	13833010450
4,0/3,2	18	13823010400	6,0/5,0	18	13833010600
4,5/3,55	18	13823010450	7,0/5,6	18	13833010700
5,0/4,0	18	13823010500	8,0/6,3	22	13833010800
5,5/4,5	18	13823010550	9,0/7,1	22	13833010900
6,0/5,0	18	13823010600			
6,3/5,0	18	13823010630			
7,0/5,6	18	13823010700			
7,1/5,6	18	13823010710			
8,0/6,3	22	13823010800			
9,0/7,1	22	13823010900			

GERC20 1-13 mm

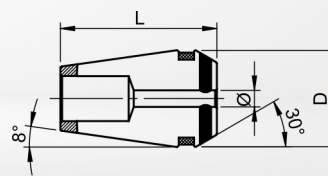
ACCESSORI PER MANDRINI DPC20

Pinze di serraggio di alta precisione 2 µm



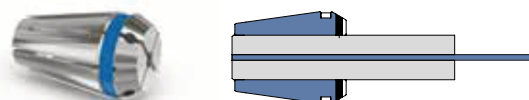
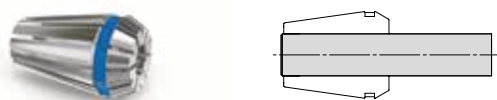
GERC20-HPØ 1-13 mm

Standard



GERC20-HPDØ 3-12 mm

A tenuta refrigerante



☒ = 2 µm
D = 21
L = 31,5

☒ = 2 µm
D = 21
L = 31,5

Ø mm	Cod. art.	Ø mm	Cod. art.	Ø mm	Cod. art.	Ø pollice	Cod. art.
1,0	13614010100	10,0	13614011000	3,0	13624010300	1/8"	13624040318
1,5	13614010150	10,5	13614011050	4,0	13624010400	3/16"	13624040476
2,0	13614010200	11,0	13614011100	5,0	13624010500	1/4"	13624040635
2,5	13614010250	11,5	13614011150	6,0	13624010600	5/16"	13624040794
3,0	13614010300	12,0	13614011200	7,0	13624010700	3/8"	13624040953
3,5	13614010350	12,5	13614011250	8,0	13624010800	7/16"	13624041111
4,0	13614010400	13,0	13614011300	9,0	13624010900	1/2"	13624041270
4,5	13614010450			10,0	13624011000		
5,0	13614010500			11,0	13624011100		
5,5	13614010550	Ø pollice	Cod. art.	12,0	13624011200		
6,0	13614010600	1/8"	13614040318				
6,5	13614010650	3/16"	13614040476				
7,0	13614010700	1/4"	13614040635				
7,5	13614010750	5/16"	13614040794				
8,0	13614010800	3/8"	13614040953				
8,5	13614010850	7/16"	13614041111				
9,0	13614010900	1/2"	13614041270				
9,5	13614010950						

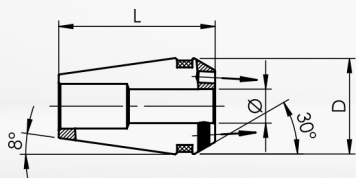
GERC20-HP Set

Contenuto set (Ø mm) Cod. art. Set
3,0•4,0•5,0•6,0•8,0•10,0•12,0 13614160070 7pezzi

GERC20-HPD Set

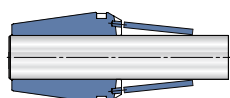
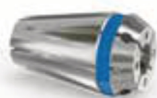
Contenuto set (Ø mm) Cod. art. Set
3,0•4,0•5,0•6,0•8,0•10,0•12,0 13624160070 7pezzi

Pinze di serraggio di alta precisione 2 µm



GERC20-HPDDØ 4-12 mm

A tenuta refrigerante e fori



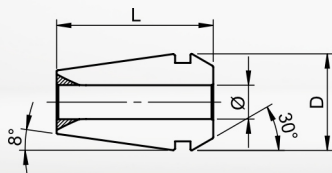
☒ =	2 µm
D =	21
L =	31,5

Ø mm	Cod. art.	Ø pollice	Cod. art.
4,0	13634010400	1/8"	13634040318
6,0	13634010600	3/16"	13634040476
8,0	13634010800	1/4"	13634040635
10,0	13634011000	5/16"	13634040794
12,0	13634011200	3/8"	13634040953
		7/16"	13634041111
		1/2"	13634041270

GERC20 1-13 mm

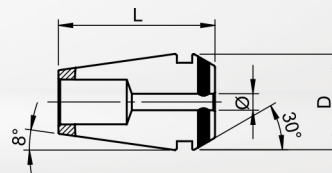
ACCESSORI PER MANDRINI DPC20

Pinze di serraggio di precisione 5 µm



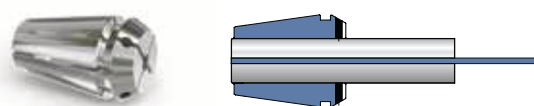
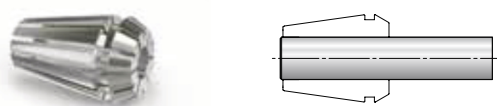
GERC20-BØ 1-13 mm

Standard



GERC20-BDØ 3-12 mm

A tenuta refrigerante



☒ = 5 µm
D = 21
L = 31,5

☒ = 5 µm
D = 21
L = 31,5

Ø mm	Cod. art.	Ø mm	Cod. art.	Ø mm	Cod. art.	Ø pollice	Cod. art.
1,0	13714010100	10,0	13714011000	3,0	13724010300	1/8"	13724040318
1,5	13714010150	10,5	13714011050	4,0	13724010400	3/16"	13724040476
2,0	13714010200	11,0	13714011100	5,0	13724010500	1/4"	13724040635
2,5	13714010250	11,5	13714011150	6,0	13724010600	5/16"	13724040794
3,0	13714010300	12,0	13714011200	7,0	13724010700	3/8"	13724040953
3,5	13714010350	12,5	13714011250	8,0	13724010800	7/16"	13724041111
4,0	13714010400	13,0	13714011300	9,0	13724010900	1/2"	13724041270
4,5	13714010450			10,0	13724011000		
5,0	13714010500			11,0	13724011100		
5,5	13714010550	Ø pollice	Cod. art.	12,0	13724011200		
6,0	13714010600	1/8"	13714040318				
6,5	13714010650	3/16"	13714040476				
7,0	13714010700	1/4"	13714040635				
7,5	13714010750	5/16"	13714040794				
8,0	13714010800	3/8"	13714040953				
8,5	13714010850	7/16"	13714041111				
9,0	13714010900	1/2"	13714041270				
9,5	13714010950						

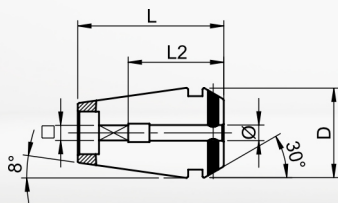
GERC20-B Set

Contenuto set (Ø mm)	Cod. art.	Set
2,0-13,0/ 1,0 in aumento	1371416	12pezzi

GERC20-BD Set

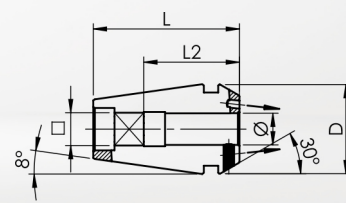
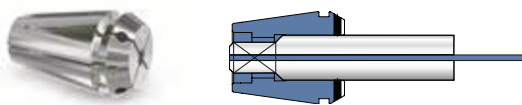
Contenuto set (Ø mm)	Cod. art.	Set
3,0•4,0•5,0•6,0•8,0•10,0•12,0	13724160070	7pezzi

Pinze di serraggio port amaschi 10 µm



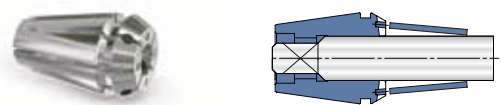
GERC20-GBDØ 3,5-12 mm

A tenuta refrigerante



GERC20-GBDDØ 4,5-12 mm

A tenuta refrigerante e fori



☐ = 10 µm
D = 21
L = 31,5

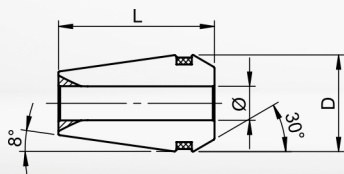
☐ = 10 µm
D = 21
L = 31,5

Ø/ ☐ mm	L2	Cod. art.	Ø/ ☐ mm	L2	Cod. art.
3,5/2,7	18	13824010350	4,5/3,55	18	13834010450
4,0/3,2	18	13824010400	6,0/5,0	18	13834010600
4,5/3,55	18	13824010450	7,0/5,6	18	13834010700
5,0/4,0	18	13824010500	8,0/6,3	22	13834010800
5,5/4,5	18	13824010550	9,0/7,1	22	13834010900
6,0/5,0	18	13824010600	10,0/8,0	25	13834011000
6,3/5,0	18	13824010630	11,0/9,0	25	13834011100
7,0/5,6	18	13824010700	12,0/9,0	25	13834011200
7,1/5,6	18	13824010710			
8,0/6,3	22	13824010800			
9,0/7,1	22	13824010900			
10,0/8,0	25	13824011000			
11,0/9,0	25	13824011100			
11,2/9,0	25	13824011120			
12,0/9,0	25	13824011200			

GERC25 1-16 mm

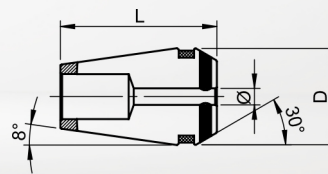
ACCESSORI PER MANDRINI DPC25 | AFC25

Pinze di serraggio di alta precisione 2 µm



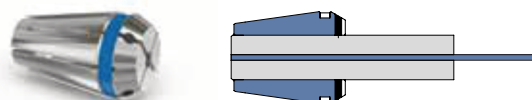
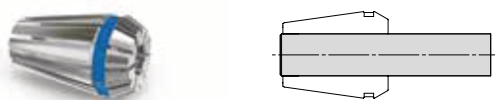
GERC25-HPØ 1-16 mm

Standard



GERC25-HPDØ 3-16 mm

A tenuta refrigerante



☒ = 2 µm
D = 26
L = 34

☒ = 2 µm
D = 26
L = 34

Ø mm	Cod. art.	Ø mm	Cod. art.	Ø mm	Cod. art.	Ø pollice	Cod. art.
1,0	13615010100	12,0	13615011200	3,0	13625010300	1/8"	13625040318
1,5	13615010150	12,5	13615011250	4,0	13625010400	3/16"	13625040476
2,0	13615010200	13,0	13615011300	5,0	13625010500	1/4"	13625040635
2,5	13615010250	13,5	13615011350	6,0	13625010600	5/16"	13625040794
3,0	13615010300	14,0	13615011400	7,0	13625010700	3/8"	13625040953
3,5	13615010350	14,5	13615011450	8,0	13625010800	7/16"	13625041111
4,0	13615010400	15,0	13615011500	9,0	13625010900	1/2"	13625041270
4,5	13615010450	15,5	13615011550	10,0	13625011000	9/16"	13625041429
5,0	13615010500	16,0	13615011600	11,0	13625011100	5/8"	13625041588
5,5	13615010550			12,0	13625011200		
6,0	13615010600			13,0	13625011300		
6,5	13615010650	Ø pollice	Cod. art.	14,0	13625011400		
7,0	13615010700	1/8"	13615040318	15,0	13625011500		
7,5	13615010750	3/16"	13615040476	16,0	13625011600		
8,0	13615010800	1/4"	13615040635				
8,5	13615010850	5/16"	13615040794				
9,0	13615010900	3/8"	13615040953				
9,5	13615010950	7/16"	13615041111				
10,0	13615011000	1/2"	13615041270				
10,5	13615011050	9/16"	13615041429				
11,0	13615011100	5/8"	13615041588				
11,5	13615011150						

GERC25-HP Set

Contenuto set (Ø mm)

Cod. art.

Set

4,0•6,0•8,0•10,0•12,0•14,0•16,0

13615160070

7pezzi

GERC25-HPD Set

Contenuto set (Ø mm)

Cod. art.

Set

4,0•6,0•8,0•10,0•12,0•14,0•16,0

13625160070

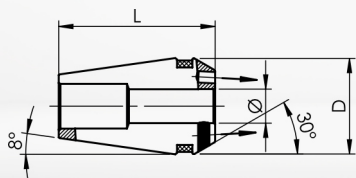
7pezzi

ACCESSORI PER MANDRINI

DPC25 | AFC25

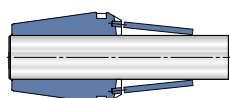
GERC25
1-16 mm

Pinze di serraggio di alta precisione 2 µm



GERC25-HPDDØ 4-16 mm

A tenuta refrigerante e fori

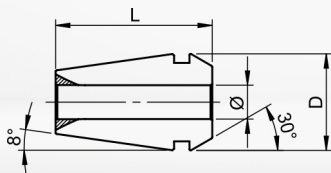


☒ =		2 µm	
D =		26	
L =		34	
Ø mm	Cod. art.	Ø pollice	Cod. art.
4,0	13635010400	1/8"	13635040318
6,0	13635010600	3/16"	13635040476
8,0	13635010800	1/4"	13635040635
10,0	13635011000	5/16"	13635040794
12,0	13635011200	3/8"	13635040953
14,0	13635011400	7/16"	13635041111
16,0	13635011600	1/2"	13635041270
		9/16"	13635041429
		5/8"	13635041588

GERC25 1-16 mm

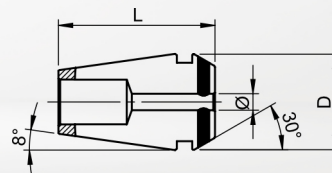
ACCESSORI PER MANDRINI DPC25

Pinze di serraggio di precisione 5 µm



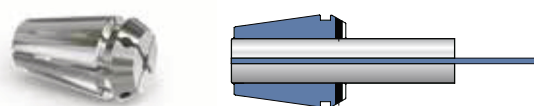
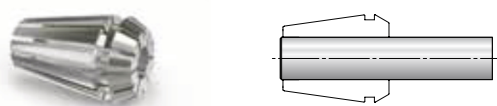
GERC25-BØ 1-16 mm

Standard



GERC25-BDØ 3-16 mm

A tenuta refrigerante



∇ = 5 µm
D = 26
L = 34

∇ = 5 µm
D = 26
L = 34

Ø mm	Cod. art.	Ø mm	Cod. art.	Ø mm	Cod. art.	Ø pollice	Cod. art.
1,0	13715010100	12,0	13715011200	3,0	13725010300	1/8"	13725040318
1,5	13715010150	12,5	13715011250	4,0	13725010400	3/16"	13725040476
2,0	13715010200	13,0	13715011300	5,0	13725010500	1/4"	13725040635
2,5	13715010250	13,5	13715011350	6,0	13725010600	5/16"	13725040794
3,0	13715010300	14,0	13715011400	7,0	13725010700	3/8"	13725040953
3,5	13715010350	14,5	13715011450	8,0	13725010800	7/16"	13725041111
4,0	13715010400	15,0	13715011500	9,0	13725010900	1/2"	13725041270
4,5	13715010450	15,5	13715011550	10,0	13725011000	9/16"	13725041429
5,0	13715010500	16,0	13715011600	11,0	13725011100	5/8"	13725041588
5,5	13715010550			12,0	13725011200		
6,0	13715010600			13,0	13725011300		
6,5	13715010650	Ø pollice	Cod. art.	14,0	13725011400		
7,0	13715010700	1/8"	13715040318	15,0	13725011500		
7,5	13715010750	3/16"	13715040476	16,0	13725011600		
8,0	13715010800	1/4"	13715040635				
8,5	13715010850	5/16"	13715040794				
9,0	13715010900	3/8"	13715040953				
9,5	13715010950	7/16"	13715041111				
10,0	13715011000	1/2"	13715041270				
10,5	13715011050	9/16"	13715041429				
11,0	13715011100	5/8"	13715041588				
11,5	13715011150						

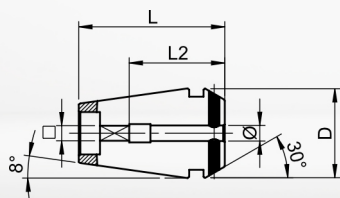
GERC25-B Set

Contenuto set (Ø mm)	Cod. art.	Set
2,0-16,0/ 1,0 in aumento	1371516	15pezzi

GERC25-BD Set

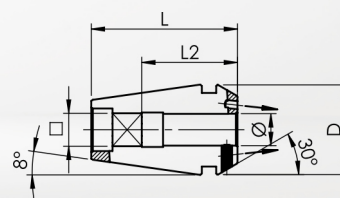
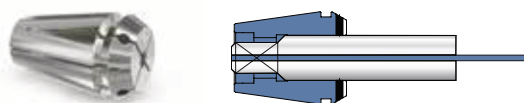
Contenuto set (Ø mm)	Cod. art.	Set
4,0•6,0•8,0•10,0•12,0•14,0•16,0	13725160070	7pezzi

Pinze di serraggio port amaschi 10 µm



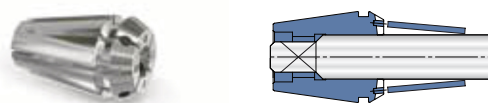
GERC25-GBDØ 3,5-16 mm

A tenuta refrigerante



GERC25-GBDDØ 4,5-16 mm

A tenuta refrigerante e fori



☐ = 10 µm
D = 26
L = 34

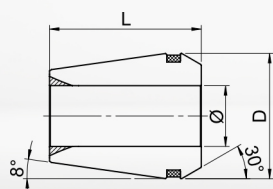
☐ = 10 µm
D = 26
L = 34

Ø/ □ mm	L2	Cod. art.	Ø/ □ mm	L2	Cod. art.
3,5/2,7	18	13825010350	4,5/3,55	18	13835010450
4,0/3,2	18	13825010400	6,0/5,0	18	13835010600
4,5/3,55	18	13825010450	7,0/5,6	18	13835010700
5,0/4,0	18	13825010500	8,0/6,3	22	13835010800
5,5/4,5	18	13825010550	9,0/7,1	22	13835010900
6,0/5,0	18	13825010600	10,0/8,0	25	13835011000
6,3/5,0	18	13825010630	11,0/9,0	25	13835011100
7,0/5,6	18	13825010700	12,0/9,0	25	13835011200
7,1/5,6	18	13825010710	14,0/11,2	25	13835011400
8,0/6,3	22	13825010800	16,0/12,5	25	13835011600
9,0/7,1	22	13825010900			
10,0/8,0	25	13825011000			
11,0/9,0	25	13825011100			
11,2/9,0	25	13825011120			
12,0/9,0	25	13825011200			
12,5/10,0	25	13825011250			
14,0/11,2	25	13825011400			
16,0/12,5	25	13825011600			

GERC32 2-20 mm

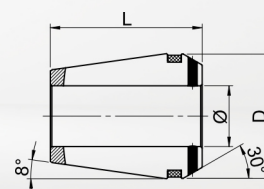
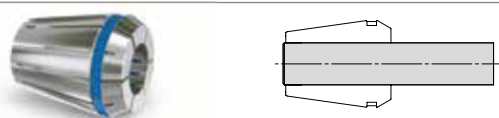
ACCESSORI PER MANDRINI DPC32 | UPC32 | FPC32 | AFC32

Pinze di serraggio di alta precisione 2 µm



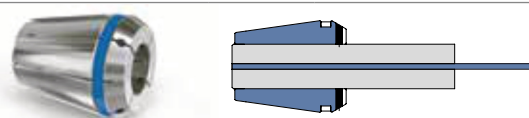
GERC32-HPØ 2-20 mm

Standard



GERC32-HPDØ 3-20 mm

A tenuta refrigerante



☒ = 2 µm
D = 33
L = 40

☒ = 2 µm
D = 33
L = 40

Ø mm	Cod. art.	Ø mm	Cod. art.	Ø mm	Cod. art.	Ø pollice	Cod. art.
2,0	13616010200	15,0	13616011500	3,0	13626010300	1/8"	13626040318
2,5	13616010250	15,5	13616011550	4,0	13626010400	3/16"	13626040476
3,0	13616010300	16,0	13616011600	5,0	13626010500	1/4"	13626040635
3,5	13616010350	16,5	13616011650	6,0	13626010600	5/16"	13626040794
4,0	13616010400	17,0	13616011700	7,0	13626010700	3/8"	13626040953
4,5	13616010450	17,5	13616011750	8,0	13626010800	7/16"	13626041111
5,0	13616010500	18,0	13616011800	9,0	13626010900	1/2"	13626041270
5,5	13616010550	18,5	13616011850	10,0	13626011000	9/16"	13626041429
6,0	13616010600	19,0	13616011900	11,0	13626011100	5/8"	13626041588
6,5	13616010650	19,5	13616011950	12,0	13626011200	11/16"	13626041746
7,0	13616010700	20,0	13616012000	13,0	13626011300	3/4"	13626041905
7,5	13616010750			14,0	13626011400		
8,0	13616010800			15,0	13626011500		
8,5	13616010850	Ø pollice	Cod. art.	16,0	13626011600		
9,0	13616010900	1/8"	13616040318	17,0	13626011700		
9,5	13616010950	3/16"	13616040476	18,0	13626011800		
10,0	13616011000	1/4"	13616040635	19,0	13626011900		
10,5	13616011050	5/16"	13616040794	20,0	13626012000		
11,0	13616011100	3/8"	13616040953				
11,5	13616011150	7/16"	13616041111				
12,0	13616011200	1/2"	13616041270				
12,5	13616011250	9/16"	13616041429				
13,0	13616011300	5/8"	13616041588				
13,5	13616011350	11/16"	13616041746				
14,0	13616011400	3/4"	13616041905				
14,5	13616011450						

GERC32-HP Set

Contenuto set (Ø mm)

Cod. art.

Set

4,0•6,0•8,0•10,0•12,0•14,0•16,0•20,0

13616160080

8pezzi

GERC32-HPD Set

Contenuto set (Ø mm)

Cod. art.

Set

4,0•6,0•8,0•10,0•12,0•14,0•16,0•20,0

13626160080

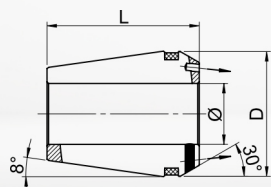
8pezzi

ACCESSORI PER MANDRINI

DPC32 | UPC32 | FPC32 | AFC32(SOLO HPDD)

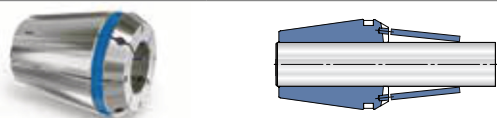
GERC32
2-20 mm

Pinze di serraggio di alta precisione 2 µm

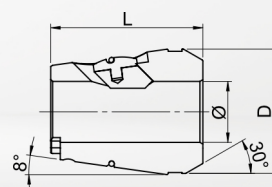


GERC32-HPDD Ø 4-20 mm

A tenuta refrigerante e fori

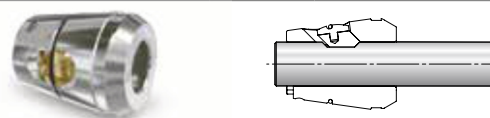


Pinze con tassello 3 µm



GERC32-W Ø 12-20 mm

Protezione contro lo sfilamento



□ = 2 µm
D = 33
L = 40

□ = 3 µm
D = 33
L = 40

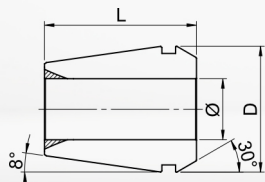
Ø mm	Cod. art.	Ø pollice	Cod. art.	Ø mm	Cod. art.	Ø pollice	Cod. art.
4,0	13636010400	1/8"	13636040318	12,0	13916011200	1/2"	13916041270
6,0	13636010600	3/16"	13636040476	16,0	13916011600	5/8"	13916041588
8,0	13636010800	1/4"	13636040635	20,0	13916012000*		
10,0	13636011000	5/16"	13636040794				
12,0	13636011200	3/8"	13636040953				
14,0	13636011400	7/16"	13636041111				
16,0	13636011600	1/2"	13636041270				
18,0	13636011800	9/16"	13636041429				
20,0	13636012000	5/8"	13636041588				
		11/16"	13636041746				
		3/4"	13636041905				

*Questa versione differisce dalla figura

GERC32 2-20 mm

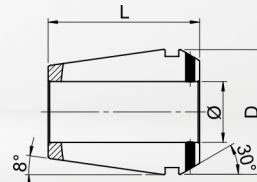
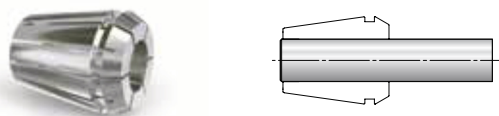
ACCESSORI PER MANDRINI DPC32 | UPC32 | FPC32

Pinze di serraggio di precisione 5 µm



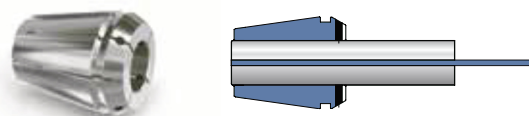
GERC32-BØ 2-20 mm

Standard



GERC32-BDØ 3-20 mm

A tenuta refrigerante



∇ = 5 µm
D = 33
L = 40

∇ = 5 µm
D = 33
L = 40

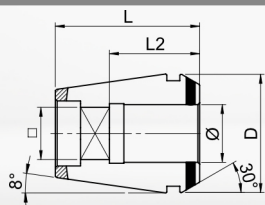
Ø mm	Cod. art.	Ø mm	Cod. art.	Ø mm	Cod. art.	Ø pollice	Cod. art.
2,0	13716010200	15,0	13716011500	3,0	13726010300	1/8"	13726040318
2,5	13716010250	15,5	13716011550	4,0	13726010400	3/16"	13726040476
3,0	13716010300	16,0	13716011600	5,0	13726010500	1/4"	13726040635
3,5	13716010350	16,5	13716011650	6,0	13726010600	5/16"	13726040794
4,0	13716010400	17,0	13716011700	7,0	13726010700	3/8"	13726040953
4,5	13716010450	17,5	13716011750	8,0	13726010800	7/16"	13726041111
5,0	13716010500	18,0	13716011800	9,0	13726010900	1/2"	13726041270
5,5	13716010550	18,5	13716011850	10,0	13726011000	9/16"	13726041429
6,0	13716010600	19,0	13716011900	11,0	13726011100	5/8"	13726041588
6,5	13716010650	19,5	13716011950	12,0	13726011200	3/4"	13726041905
7,0	13716010700	20,0	13716012000	13,0	13726011300		
7,5	13716010750			14,0	13726011400		
8,0	13716010800			15,0	13726011500		
8,5	13716010850	Ø pollice	Cod. art.	16,0	13726011600		
9,0	13716010900	1/8"	13716040318	17,0	13726011700		
9,5	13716010950	3/16"	13716040476	18,0	13726011800		
10,0	13716011000	1/4"	13716040635	19,0	13726011900		
10,5	13716011050	5/16"	13716040794	20,0	13726012000		
11,0	13716011100	3/8"	13716040953				
11,5	13716011150	7/16"	13716041111				
12,0	13716011200	1/2"	13716041270				
12,5	13716011250	9/16"	13716041429				
13,0	13716011300	5/8"	13716041588				
13,5	13716011350	11/16"	13716041746				
14,0	13716011400	3/4"	13716041905				
14,5	13716011450	13/16"	13716042064				

GERC32-B Set

GERC32-BD Set

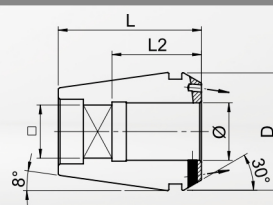
Contenuto set (Ø mm)	Cod. art.	Set	Contenuto set (Ø mm)	Cod. art.	Set
3,0-20,0/ 1,0 in aumento	1371616	18pezzi	4,0•6,0•8,0•10,0•12,0•14,0•16,0•20,0	13726160080	8pezzi

Pinze di serraggio port amaschi 10 µm



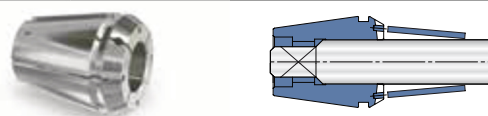
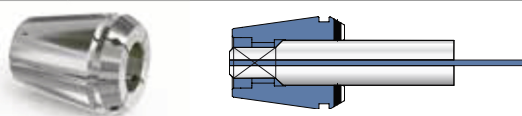
GERC32-GBDØ 4-20 mm

A tenuta refrigerante



GERC32-GBDDØ 4,5-20 mm

A tenuta refrigerante e fori



☐ = 10 µm
D = 33
L = 40

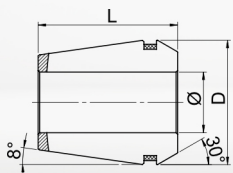
☐ = 10 µm
D = 33
L = 40

Ø/ ☐ mm	L2	Cod. art.	Ø/ ☐ mm	L2	Cod. art.
4,0/3,2	18	13826010400	4,5/3,55	18	13836010450
4,5/3,55	18	13826010450	6,0/5,0	18	13836010600
5,0/4,0	18	13826010500	7,0/5,6	18	13836010700
5,5/4,5	18	13826010550	8,0/6,3	22	13836010800
6,0/5,0	18	13826010600	9,0/7,1	22	13836010900
6,3/5,0	18	13826010630	10,0/8,0	25	13836011000
7,0/5,6	18	13826010700	11,0/9,0	25	13836011100
7,1/5,6	18	13826010710	12,0/9,0	25	13836011200
8,0/6,3	22	13826010800	14,0/11,2	25	13836011400
9,0/7,1	22	13826010900	16,0/12,5	25	13836011600
10,0/8,0	25	13826011000	18,0/14,5	30	13836011800
11,0/9,0	25	13826011100	20,0/16,0	30	13836012000
11,2/9,0	25	13826011120			
12,0/9,0	25	13826011200			
12,5/10,0	25	13826011250			
14,0/11,2	25	13826011400			
16,0/12,5	25	13826011600			
18,0/14,5	30	13826011800			
20,0/16,0	30	13826012000			

GERC40
3-26 mm

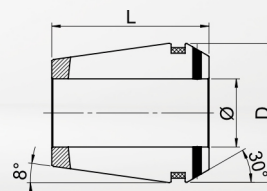
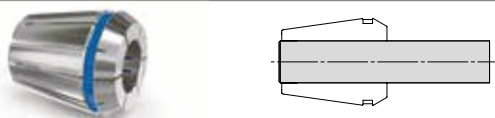
ACCESSORI PER MANDRINI
DPC40 | UPC40 | FPC40

Pinze di serraggio di alta precisione 2 µm



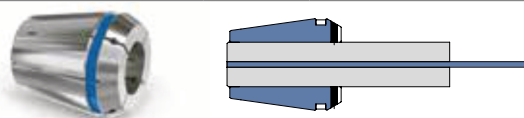
GERC40-HPØ 3-26 mm

Standard



GERC40-HPDØ 6-25 mm

A tenuta refrigerante



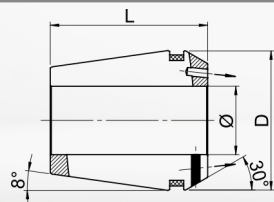
∇ = 2 µm
D = 41
L = 46

∇ = 2 µm
D = 41
L = 46

Ø mm	Cod. art.	Ø mm	Cod. art.	Ø mm	Cod. art.	Ø pollice	Cod. art.
3,0	13617010300	19,0	13617011900	6,0	13627010600	1/4"	13627040635
3,5	13617010350	19,5	13617011950	8,0	13627010800	3/8"	13627040953
4,0	13617010400	20,0	13617012000	10,0	13627011000	1/2"	13627041270
4,5	13617010450	20,5	13617012050	12,0	13627011200	5/8"	13627041588
5,0	13617010500	21,0	13617012100	14,0	13627011400	3/4"	13627041905
5,5	13617010550	21,5	13617012150	16,0	13627011600	1"	13627042540
6,0	13617010600	22,0	13617012200	18,0	13627011800		
6,5	13617010650	22,5	13617012250	20,0	13627012000		
7,0	13617010700	23,0	13617012300	22,0	13627012200		
7,5	13617010750	23,5	13617012350	25,0	13627012500		
8,0	13617010800	24,0	13617012400				
8,5	13617010850	24,5	13617012450				
9,0	13617010900	25,0	13617012500				
9,5	13617010950	25,5	13617012550				
10,0	13617011000	26,0	13617012600				
10,5	13617011050						
11,0	13617011100						
11,5	13617011150	Ø pollice	Cod. art.				
12,0	13617011200	1/8"	13617040318				
12,5	13617011250	3/16"	13617040476				
13,0	13617011300	1/4"	13617040635				
13,5	13617011350	5/16"	13617040794				
14,0	13617011400	3/8"	13617040953				
14,5	13617011450	7/16"	13617041111				
15,0	13617011500	1/2"	13617041270				
15,5	13617011550	9/16"	13617041429				
16,0	13617011600	5/8"	13617041588				
16,5	13617011650	11/16"	13617041746				
17,0	13617011700	3/4"	13617041905				
17,5	13617011750	13/16"	13617042064				
18,0	13617011800	7/8"	13617042223				
18,5	13617011850	1"	13617042540				

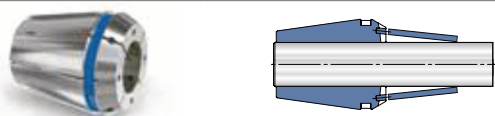
GERC

Pinze di serraggio di alta precisione 2 µm

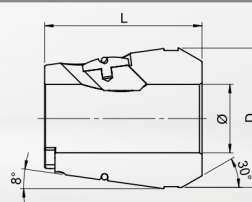


GERC40-HPDDØ 6-25 mm

A tenuta refrigerante e fori

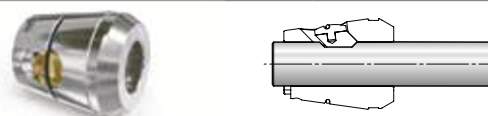


Pinze con tassello 3 µm



GERC40-WØ 16-25 mm

Protezione contro lo sfilamento



∩ = 2 µm
D = 41
L = 46

∩ = 3 µm
D = 41
L = 46

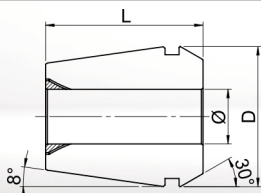
Ø mm	Cod. art.	Ø pollice	Cod. art.	Ø mm	Cod. art.	Ø pollice	Cod. art.
6,0	13637010600	1/4"	13637040635	16,0	13917011600	5/8"	13917041588
8,0	13637010800	3/8"	13637040953	20,0	13917012000	3/4"	13917041905
10,0	13637011000	1/2"	13637041270	25,0	13917012500*		
12,0	13637011200	5/8"	13637041588				
14,0	13637011400	3/4"	13637041905				
16,0	13637011600	1"	13637042540				
18,0	13637011800						
20,0	13637012000						
25,0	13637012500						

*Questa versione differisce dalla figura

GERC40 3-26 mm

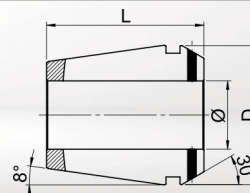
ACCESSORI PER MANDRINI DPC40 | UPC40 | FPC40

Pinze di serraggio di precisione 5 µm



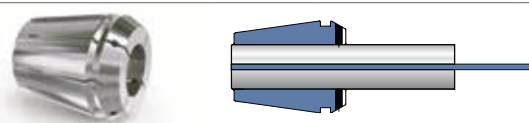
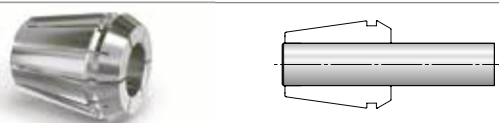
GERC40-BØ 3-26 mm

Standard



GERC40-BDØ 6-25 mm

A tenuta refrigerante



∇ = 5 µm
D = 41
L = 46

∇ = 5 µm
D = 41
L = 46

∅ mm	Cod. art.	∅ mm	Cod. art.	∅ mm	Cod. art.
3,0	13717010300	19,0	13717011900	6,0	13727010600
3,5	13717010350	19,5	13717011950	8,0	13727010800
4,0	13717010400	20,0	13717012000	10,0	13727011000
4,5	13717010450	20,5	13717012050	12,0	13727011200
5,0	13717010500	21,0	13717012100	14,0	13727011400
5,5	13717010550	21,5	13717012150	16,0	13727011600
6,0	13717010600	22,0	13717012200	18,0	13727011800
6,5	13717010650	22,5	13717012250	20,0	13727012000
7,0	13717010700	23,0	13717012300	22,0	13727012200
7,5	13717010750	23,5	13717012350	25,0	13727012500
8,0	13717010800	24,0	13717012400		
8,5	13717010850	24,5	13717012450		
9,0	13717010900	25,0	13717012500		
9,5	13717010950	25,5	13717012550		
10,0	13717011000	26,0	13717012600		
10,5	13717011050				
11,0	13717011100				
11,5	13717011150	∅ pollice	Cod. art.		
12,0	13717011200	1/8"	13717040318		
12,5	13717011250	3/16"	13717040476		
13,0	13717011300	1/4"	13717040635		
13,5	13717011350	5/16"	13717040794		
14,0	13717011400	3/8"	13717040953		
14,5	13717011450	7/16"	13717041111		
15,0	13717011500	1/2"	13717041270		
15,5	13717011550	9/16"	13717041429		
16,0	13717011600	5/8"	13717041588		
16,5	13717011650	11/16"	13717041746		
17,0	13717011700	3/4"	13717041905		
17,5	13717011750	13/16"	13717042064		
18,0	13717011800	7/8"	13717042223		
18,5	13717011850	1"	13717042540		

GERC40-B Set

Contenuto set (∅ mm)	Cod. art.	Set
4,0-26,0/ 1,0 in aumento	1371716	23pezzi

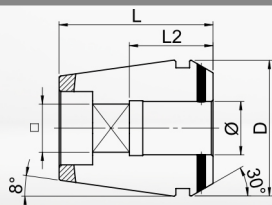
ACCESSORI PER MANDRINI

DPC40 | UPC40 | FPC40

GERC40

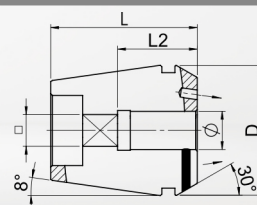
3-26 mm

Pinze di serraggio port amaschi 10 µm



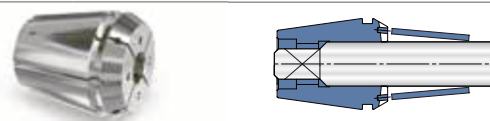
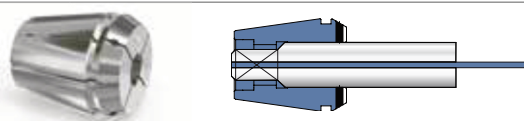
GERC40-GBDØ 6-25 mm

A tenuta refrigerante



GERC40-GBDDØ 6-25 mm

A tenuta refrigerante e fori



☐ =
D =
L =

10 µm
41
46

☐ =
D =
L =

10 µm
41
46

Ø/ ☐ mm	L2	Cod. art.	Ø/ ☐ mm	L2	Cod. art.
6,0/5,0	18	13827010600	6,0/5,0	18	13837010600
6,3/5,0	18	13827010630	7,0/5,6	18	13837010700
7,0/5,6	18	13827010700	8,0/6,3	22	13837010800
7,1/5,6	18	13827010710	9,0/7,1	22	13837010900
8,0/6,3	22	13827010800	10,0/8,0	25	13837011000
9,0/7,1	22	13827010900	11,0/9,0	25	13837011100
10,0/8,0	25	13827011000	12,0/9,0	25	13837011200
11,0/9,0	25	13827011100	14,0/11,2	25	13837011400
11,2/9,0	25	13827011120	16,0/12,5	25	13837011600
12,0/9,0	25	13827011200	18,0/14,5	33	13837011800
12,5/10,0	25	13827011250	20,0/16,0	33	13837012000
14,0/11,2	25	13827011400	22,0/18,0	33	13837012200
16,0/12,5	25	13827011600	25,0/20,0	33	13837012500
18,0/14,5	33	13827011800			
20,0/16,0	33	13827012000			
22,0/18,0	33	13827012200			
25,0/20,0	33	13827012500			