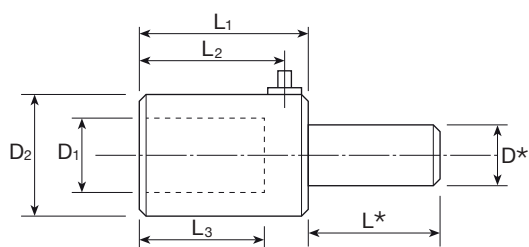


Portautensili per torretta

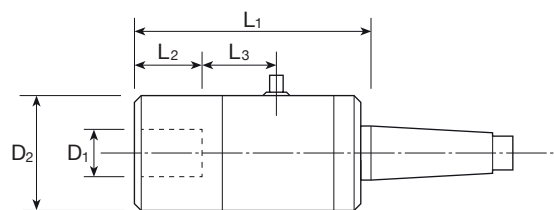
Cod.	D mm	L mm	A mm	B mm	C mm	E mm	F mm
VT 225	25	50	9	19	41	19	37
VT 235	35	60	14	22.5	53.5	25	50.5



Portautensili non rotanti

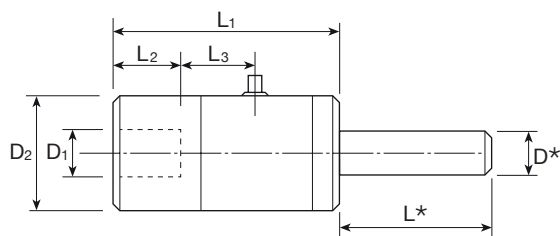
Cod.	D ₁ mm	D ₂ mm	L ₁ mm	L ₂ mm	L ₃ mm
VT 316	16	33	55	47	40
VT 325	25	46	70	60	50
VT 335	35	58	80	70	60

*Quote Ø D e L da precisare in sede d'ordine



Portautensili rotanti attacco con Morse

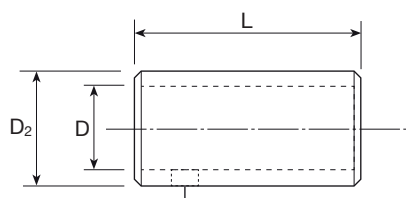
Cod.	D ₁ mm	D ₂ mm	L ₁ mm	L ₂ mm	L ₃ mm	c.M. N.
VT 516/1	16	32	89	40	24	1
VT 525/2	25	46	113	50	31	2
VT 525/3	25	46	113	50	31	3
VT 535/4	35	58	123	60	28	4



Portautensili rotanti attacco cilindrico

Cod.	D ₁ mm	D ₂ mm	L ₁ mm	L ₂ mm	L ₃ mm	Dmax mm
VT 616	16	32	85	40	24	16
VT 625	25	46	109	50	31	25
VT 635	35	58	119	60	28	32

*Quote Ø D e L da precisare in sede d'ordine



Bussole di riduzione

Cod.	D mm	D ₂ mm	L mm
VT 25/16	16	25	50
VT 25/20	20	25	50
VT 35/25	25	35	60