

960

C



Systèmes modulaires avec refroidissement intérieur

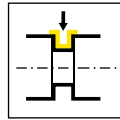
- Base de support
- Support Cassette

Sistema modulare per gole e troncatura con lubrorefrigerazione interna

- Attacco base
- Portacartucce per gole

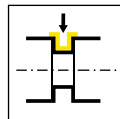
C

Base de support
Attacco Base
960.BMT/960.MAZ/
960.VDI/960.HSKT
77/W13/W14/C3/C5
C6/C8/HSKT63/
HSKT100/HSKT40
VDI/TR/W12/W89/
842/845



Page/Pag.
115-116, 118-119,
123, 126, 131,
135-141, 143-144,
147-148

Support cassette
Portacartucce per gole
960/991/990/940



Page/Pag.
120-121, 124,
127, 132, 145



Trouver le bon outil pour votre machine:

Trova l'utensile corretto per la tua macchina:

> Systeme 845 IK

Systeme 845

Votre Sélection

Marque de machine: S'il vous plaît sélectionnez
Model de machine: S'il vous plaît sélectionnez
Chercher

↓ Exemple de sélection

Marque de machine: Mori Seiki
Model de machine: NL/NLX 3000
Chercher

Résultat NL/NLX 3000

Base de support

960.BMT60.C0.00101

960

HORN base holder for system 960 with through coolant cassettes system 845

Select the machine manufacturer and then select the model to look up the appropriate HORN part numbers for the base holder and the through coolant cassette.

Your selection

Manufacturer: Please Select
Machine type: Please Select
Search

↓ Selection example

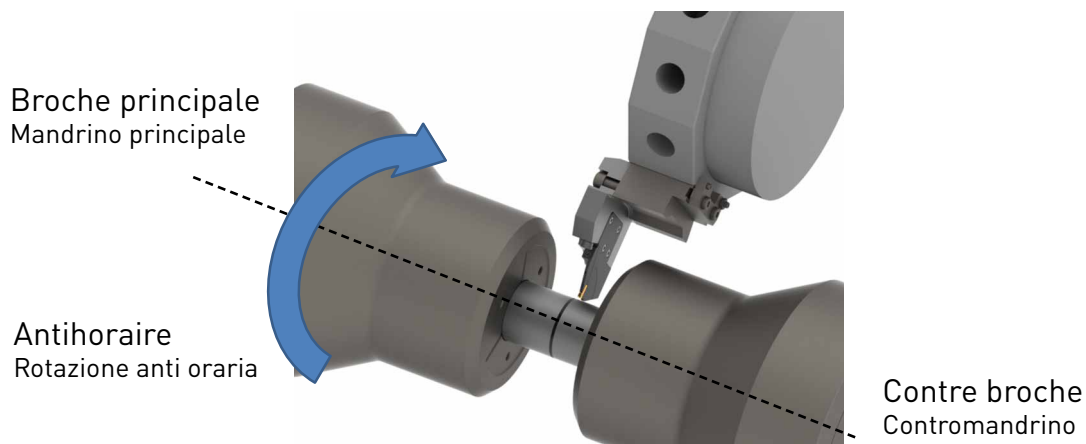
Manufacturer: Mori Seiki
Machine type: NL/NLX 3000
Search

Result for NL/NLX 3000

Basic toolholder

960.BMT60.C0.00101

C



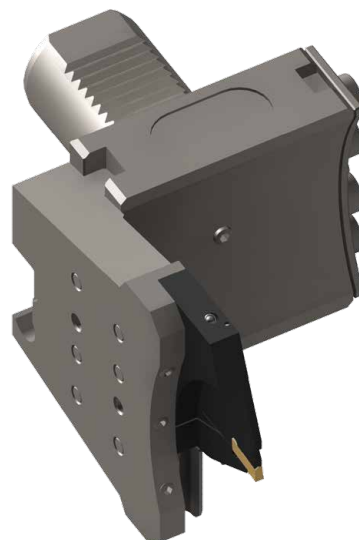
Tronçonnage sur le Broche de reprise,
rotation dans le sens antihoraire
Troncatura verso il contromandrino con
rotazione sinistra



Support cassette
Portacartucce
960.I.0.845...

Cassette
Cartuccia
RNK100.0845...

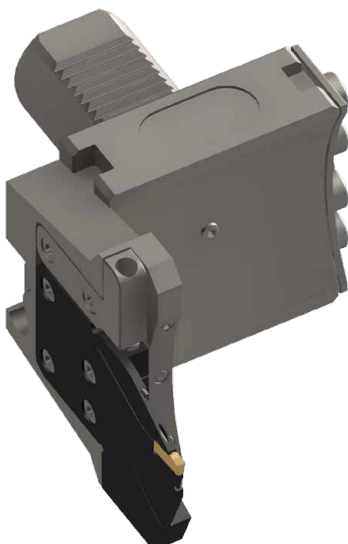
Tronçonnage sur le Broche de reprise,
rotation dans le sens horaire
Troncatura verso il contromandrino con
rotazione destra



Support cassette
Portacartucce
960.I.0.845...

Cassette
Cartuccia
LNK100.0845...

Tronçonnage sur la broche principale
en **rotation antihoraire**
Troncatura verso il mandrino principale con
rotazione sinistra



Support cassette
Portacartucce
960.A.0.845...

Cassette
Cartuccia
LNK100.0845...

Tronçonnage sur la broche principale
en **rotation horaire**
Troncatura verso il mandrino principale con
rotazione destra



Support cassette
Portacartucce
960.A.0.845...

Cassette
Cartuccia
RNK100.0845...

Détermination des données d'outils

Definizione dati utensile



Base de support Attacco base	
Choisir la taille du BMT Scelta dimensione BMT	BMT40
Sélectionner le porte outils de base Select basis toolholder	960.BMT40.C0.00101
Notice dimension Annotare dimensione	$l_1 = 27 \text{ mm}$
Support cassette Portacartucce per gole	
Cassette exter Cartuccia sul lato esterno	960.A....
Cassette inter (Construction supérieur) Cartuccia sul lato interno (Dimensione maggiore in lunghezza)	960.I....
Sélectionner le support cassette Scelta adattatore	960.I.0.845.0003.IK
Détermination de la longueur de référence, notice dimension Determinare lunghezza di riferimento, annotare dimensione	
Ligne porte outils de base 960.BMT40.... Colonne porte outils à gorges 960.I...0003 Linea del corpo base 960.BMT40.... Colonna dell'adattatore 960.I...0003	$l_g = 89,5 \text{ mm}$ $f = 66,8 \text{ mm}$
Cassette Cartuccia	
Caractéristiques dimensionnelles Dimensioni	Diamètre de barre 65 mm, largeur 3 mm Diametro de barre 65 mm, larghezza 3 mm
Sélectionner une cassette Scelta cartuccia	LNK100.0845.34.4.73.IK
Notice dimension Annotare dimensione	$l_k = 46 \text{ mm}$

Calcul de la hauteur totale pour les porte outils Calcolo lunghezza totale utensile combinato	Données des outils Dimensione utensile						
$l_g 89,5 \text{ mm} + l_k 46 \text{ mm} = 135,5 \text{ mm}$	<table border="1"> <tr> <td>x</td> <td>z</td> </tr> <tr> <td>$r = 135,5 \text{ mm}$</td> <td>$f = 66,8 \text{ mm}$</td> </tr> <tr> <td>$\varnothing = 271,0 \text{ mm}$</td> <td></td> </tr> </table>	x	z	$r = 135,5 \text{ mm}$	$f = 66,8 \text{ mm}$	$\varnothing = 271,0 \text{ mm}$	
x	z						
$r = 135,5 \text{ mm}$	$f = 66,8 \text{ mm}$						
$\varnothing = 271,0 \text{ mm}$							

Des moyens de calcul du diamètre de rotation

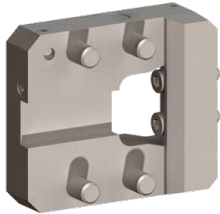
Calcolo dell'ingombro di volteggio

$135,5 \text{ mm} - l_1 (27 \text{ mm}) = 108,5 \text{ mm}$ donne un diamètre de rotation maxi de 217 mm
 $135,5 \text{ mm} - l_1 (27 \text{ mm}) = 108,5 \text{ mm}$ equivalente ad un ingombro diametrale di 217 mm

Tourelles étoiles
Torretta a stella

Tourelles
Toretta a revolver

C



960.BMT...



960.MAZ...



960.VDI..C...

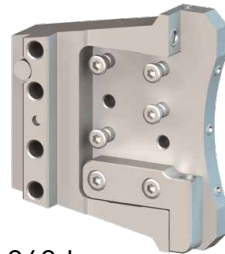


960.VDI.30.B...
960.VDI.40.B...

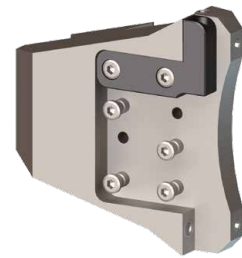
960.VDI.50.B...



960.A...



960.I...



960.Q.0.845.0000.IK

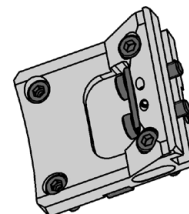
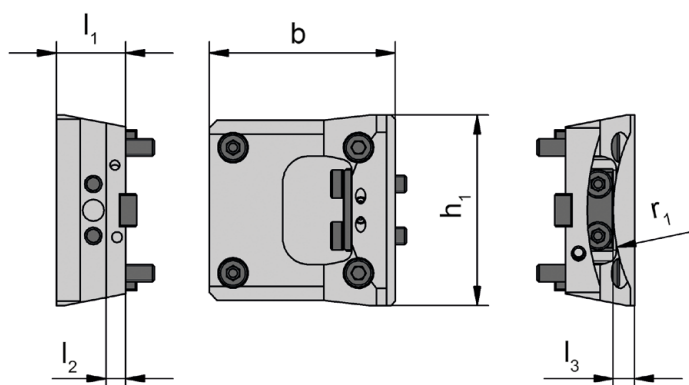
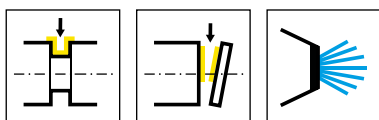
960.Q.0.845.0001.IK



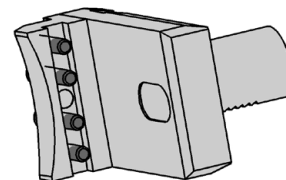
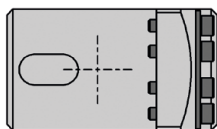
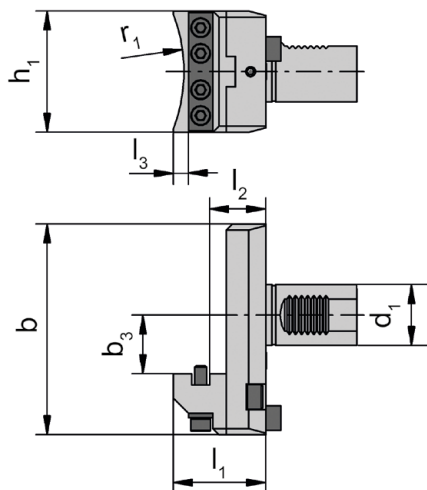
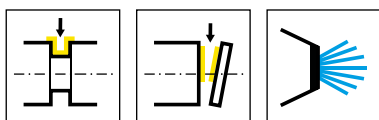
RNK100.0845...



LNK100.0845..



N° de commande Codice prodotto	l_3	l_2	h_1	b	r_1	l_1	HWS
960.BMT00.CO.00601	-	-42	95	110	-	20	FN12
960.BMT00.CO.00701	7	34	80	102	88	58	FN12
960.BMT00.CO.00901	7	57	78	139	105	81	FN12
960.BMT00.CO.01101	17,5	-38,5	114	130	51	20	FN12
960.BMT00.CO.01301	-	19	108	135	-	42	FN12
960.BMT00.CO.01601	-	-24	102	120	-	30	FN12
960.BMT00.CO.01701	8	9,5	90	78	73,5	32	FN12
960.BMT32.CO.00101	-	1	100	112,5	-	25	FN12
960.BMT38.CO.00101	7	9	75	86	83	32	FN12
960.BMT40.CO.00101	5	9	82	120	88	32	FN12
960.BMT42.CO.00101	7	9	80	68	70	32	FN12
960.BMT45.CO.00101	10	9	75	83	85	32	FN12
960.BMT45.CO.00201	8	9	74	100,5	85	30	FN12
960.BMT55.CO.00101	8	9	84	84	83	30	FN12
960.BMT55.CO.00201	10	9	84	104	105,5	32	FN12
960.BMT55.CO.00301	9	9	92	104	86	32	FN12
960.BMT55.CO.00401	10	9	84	94,5	85	32	FN12
960.BMT60.CO.00101	4	9	108	133	87	32	FN12
960.BMT65.CO.00101	8	9	91	99	83	30	FN12
960.BMT65.CO.00201	10	9	99	106	83	32	FN12
960.BMT65.CO.00301	9	13	96	109	127,5	36	FN12
960.BMT68.CO.00101	7	26	86	137	76	48	FN12
960.BMT75.CO.00101	11	19	112	132,5	127,5	45	FN12
960.BMT80.CO.00101	7	10	96	120	88	33	FN12
960.BMT80.CO.00201	-	26	96	174,5	-	48	FN12



C

N° de commande Codice prodotto	l_3	l_2	h_1	b_3	b	r_1	l_1	d_1	HWS
960.MAZ40.CO.00101	7	37	76	60	139	105	61	40	FN12
960.MAZ40.CO.00201	7	37	78	60	139	105	61	40	FN12
960.MAZ40.CO.00301	6	34	78	63	142	88	58	40	FN12
960.MAZ40.CO.00401	6	34	78	63	142	88	58	40	FN12
960.MAZ50.CO.00101	6	52	96	60	140	100	77	50	FN12
960.MAZ00.CO.00101	7	37	80	38,75	139	105	61	40	FN12
960.MAZ00.CO.00201	7	37	78	60	139	105	61	40	FN12

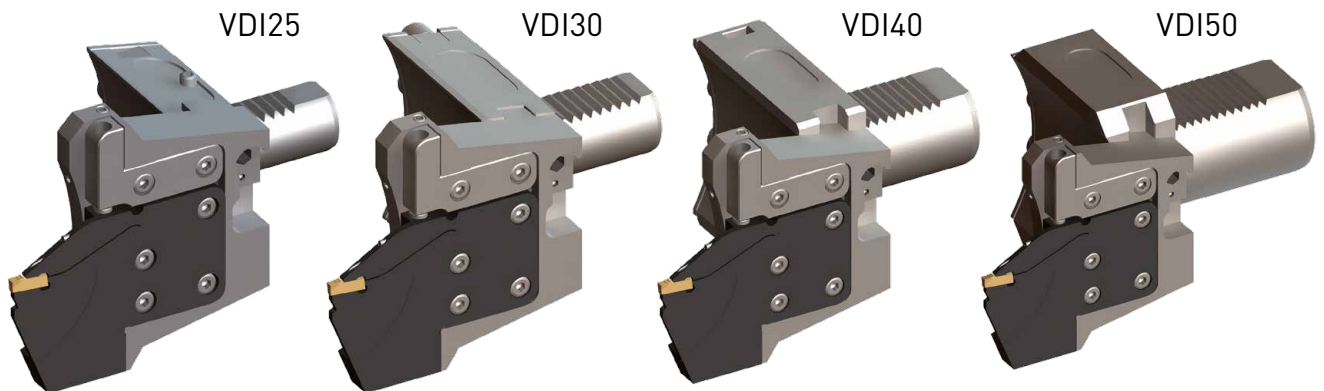
Vue d'ensemble de la cassette 845 + Support de base VDI

Visione del sistema di cassette 845 + Attacco base VDI



1 Support cassette s'adapte à tous les porte outils VDI de base

1 Portacartucce può essere montato su tutte le piastre base VDI

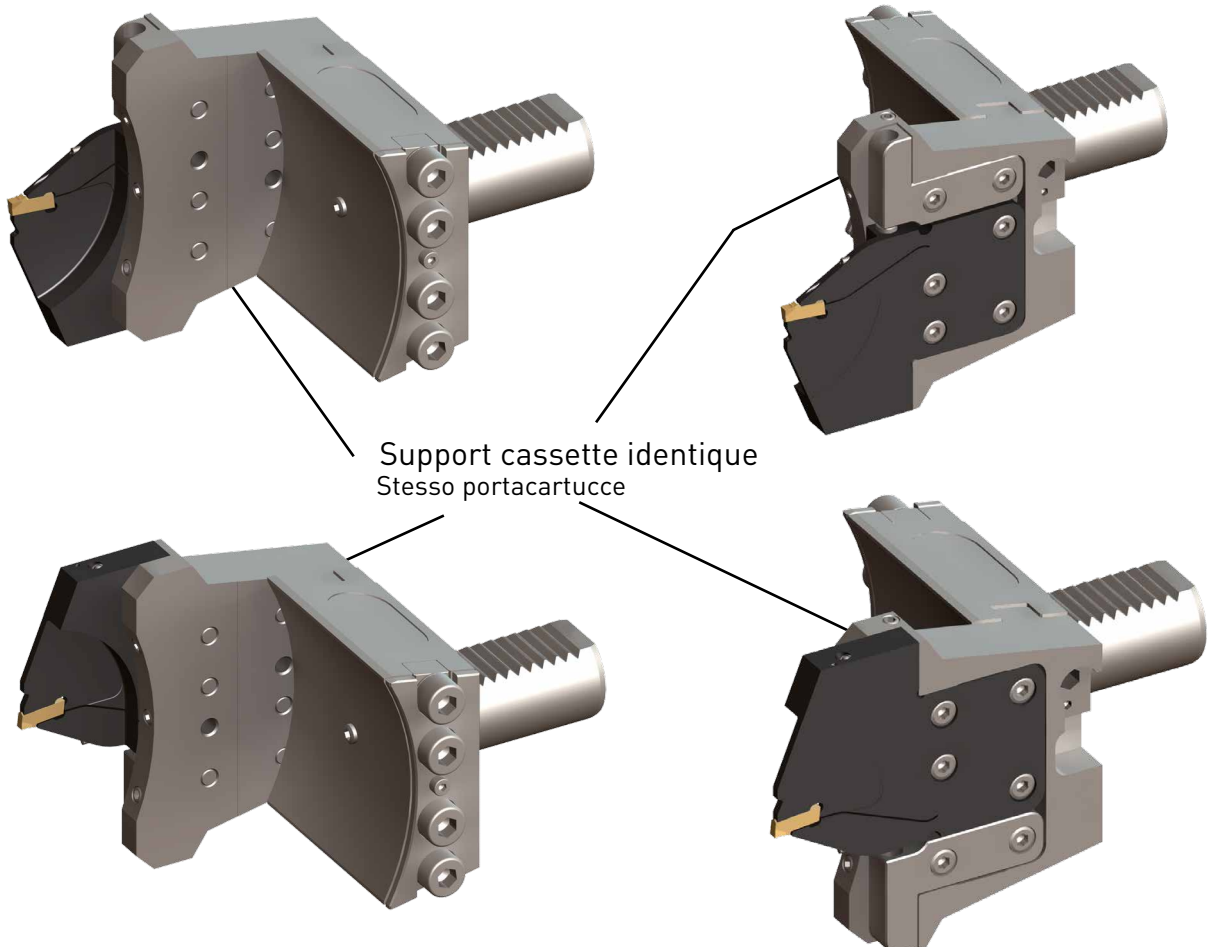


Avec 1 support cassette et un porte outil VDI = 4 possibilités d'assemblage

1 Piastra base + 1 portacartucce = 4 diverse possibilità di assemblaggio

Gauche - position normale plaquette en haut
Sinistro - Normale

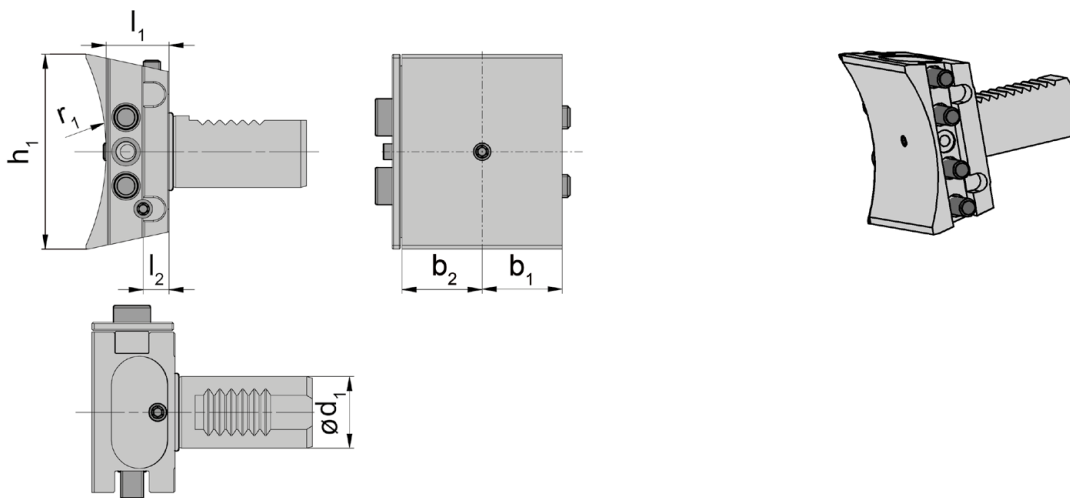
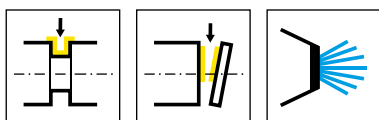
Droite - position normale plaquette en haut
Destro - Normale



Support cassette identique
Stesso portacartucce

Gauche - position plaquette en bas
Sinistro - Ribaltato

Droite - position plaquette en bas
Destro - Ribaltato



N° de commande Codice prodotto	l_1	l_2	h_1	b_2	b_1	r_1	d_1	HWS	HMS
960.VDI25.C0.00101	23	9	68	28	28	80	25	FN12	VDI25
960.VDI30.C0.00101	23	9	76	34	34	80	30	FN12	VDI30
960.VDI40.C0.00101	23	9	84	40	40	80	40	FN12	VDI40
960.VDI50.C0.00101	24	11	98	40	40	80	50	FN12	VDI50

Base de support 960.VDI25.C0... pour support cassette 960.A.0.842... et 960.I.0.0842...

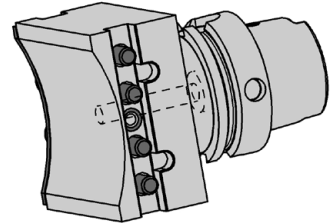
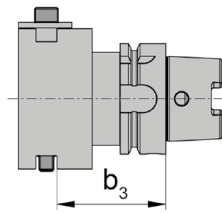
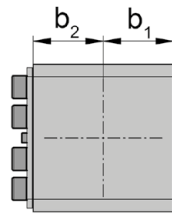
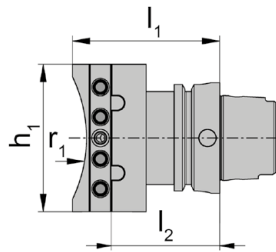
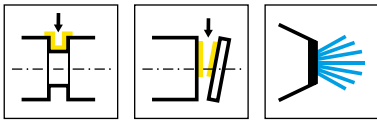
Lors de l'utilisation des porte-outils de gorges 960.A.0.845... et 960.I.0.0845... respecter le contour d'interférence !

Attacco base 960.VDI25.C0... per portacartucce per gole 960.A.0.842... e 960.I.0.0842...

Quando si utilizzano i portautensili 960.A.0.845... e 960.I.0.0845... attenzione agli ingombri!

pour support cassette type 960.A... et 960.I...

per portacartucce per gole 960.A... et 960.I...

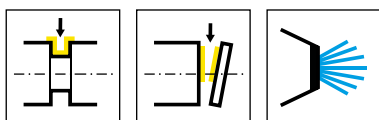


C

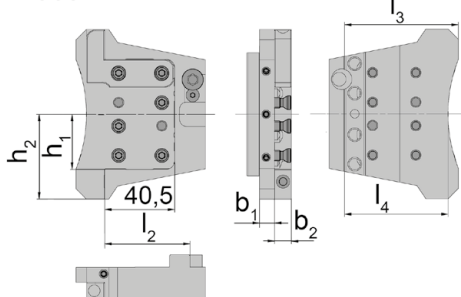
N° de commande Codice prodotto	l_1	l_2	h_1	b_2	b_1	b_3	r_1	d_1	HWS
960.HSKT63.C0.00101	76	62	84	40	40	62	80	63	FN12

pour support cassette type 960.A... et 960.I...
per portacartucce per gole 960.A... et 960.I...

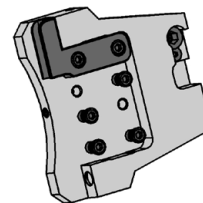
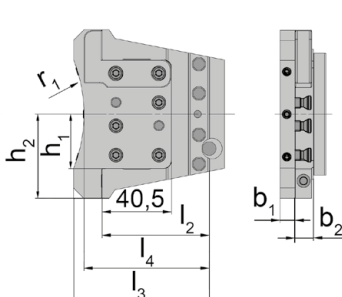
Lors de l'utilisation des porte-outils de gorges 960.A.0.845... et 960.I.0.0845... respecter le contour d'interférence !
Attacco base 960.VDI25.C0... per portacartucce per gole 960.A.0.842... e 960.I.0.0842...



960.A...



960.I...



960.A... = cassettes extérieures
960.A... = cartuccia sul lato esterno

960.I... = cassettes intérieures (construction supérieur)
960.I... = cartuccia sul lato interno (più lunga di 13 mm)

N° de commande Codice prodotto	l ₂	l ₃	l ₄	h ₁	h ₂	r ₁	b ₁	b ₂	HWS	HMS
960.A.0.842.0000.IK	45,5	55	49,5	21	36,5	70	8,7	10,2	842001 • 842002	FN12
960.A.0.845.0000.IK	49,5	66	60	31,65	49	85	8,6	9,8	845001 • 845002	FN12
960.I.0.842.0001.IK	58,5	68	62,5	21	36,5	70	8,7	10,8	842001 • 842002	FN12
960.I.0.845.0008.IK	62,5	79	73	31,65	49	85	7,4	10,8	845001 • 845002	FN12
960.A.0.845.0002.IK	67,5	84	78	31,65	49	85	8,7	9,8	845001 • 845002	FN12
960.A.0.845.0004.IK	85	101,5	95,5	31,65	49	85	8,7	9,8	845001 • 845002	FN12
960.I.0.845.0001.IK	62,5	79	73	31,65	49	85	8,7	10,8	845001 • 845002	FN12
960.I.0.845.0003.IK	80,5	97	91	31,65	49	85	8,7	10,8	845001 • 845002	FN12

960.I.0.845.0008.IK:

Pas possible de retourner la cassette

960.I.0.845.0008.IK:

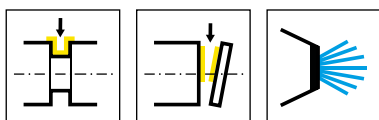
Posizione a sbalzo non possibile

Support cassettes pouvant être utilisé avec des cassettes à droite et à gauche.
Portacartucce possono essere utilizzati sia su cartuccia destra che su cartuccia sinistra.

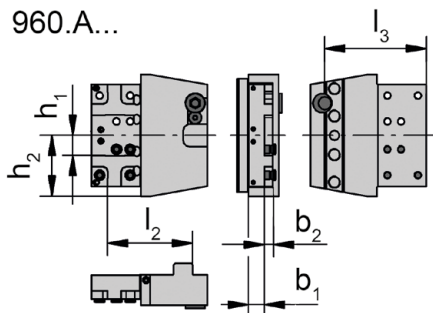
Pièces Détachées

Ricambi

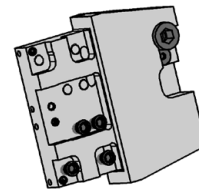
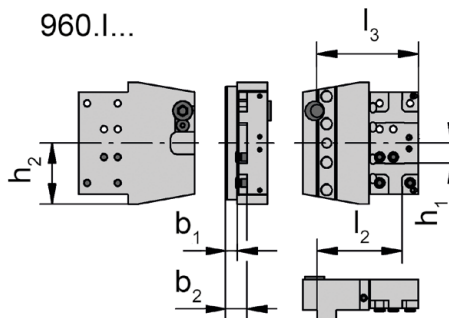
Support cassette Portacartucce per gole	Vis de serrage Vite di serraggio
960...	6.18T20P



960.A...



960.I...



960.A... = cassettes extérieures
960.A... = cartuccia sul lato esterno

960.I... = cassettes intérieures (construction supérieur)
960.I... = cartuccia sul lato interno (più lunga di 13 mm)

N° de commande Codice prodotto	l_2	l_3	h_1	h_2	b_1	b_2	HWS	HMS
960.A.0220.0001.IK	53	63	12,5	37,75	10	8,8	220002	FN12
960.I.0220.0001.IK	53	63	12,5	37,75	6	12,8	220001	FN12

Pièces Détachées

Ricambi

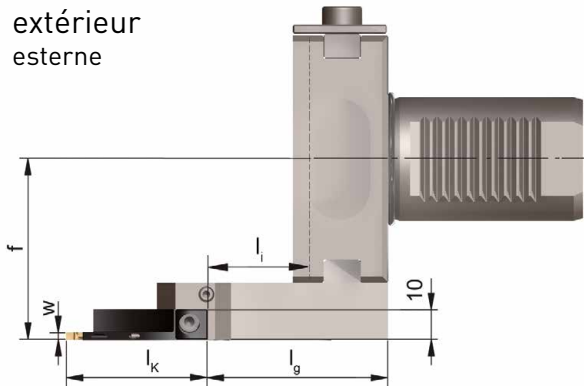
Support cassette Portacartucce per gole	Vis de serrage Vite di serraggio	Vis Vite	Tournevis TORX PLUS® Cacciavite TORX PLUS®
960...	5.12T20P	4.08.10642	T20PQ

Détermination de la longueur de référence

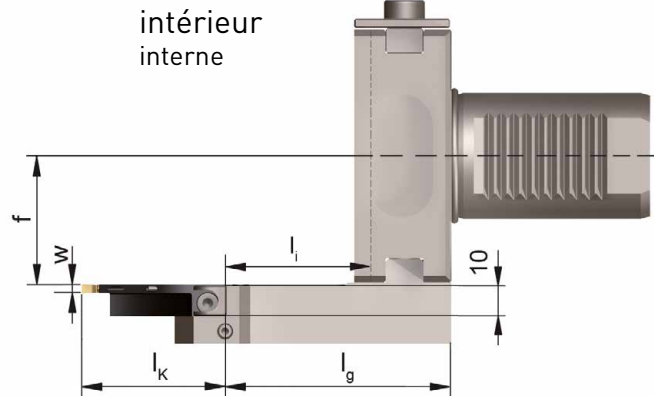
Determinazione della lunghezza totale d'ingombro



extérieur
esterne



intérieur
interne



$$l_K \text{ (Longueur de la cassette)} + l_g \text{ (l}_2 \text{ Support cassette + l}_2 \text{ Base de support)}$$

$$l_K \text{ (Lunghezza cartuccia)} + l_g \text{ (l}_2 \text{ Portacaartucce + l}_2 \text{ Supporto base)}$$

Illustration VDI
Figura VDI

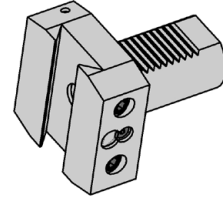
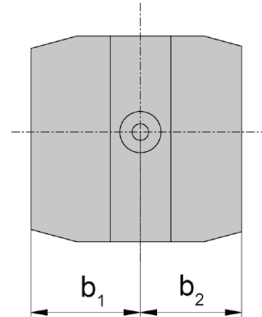
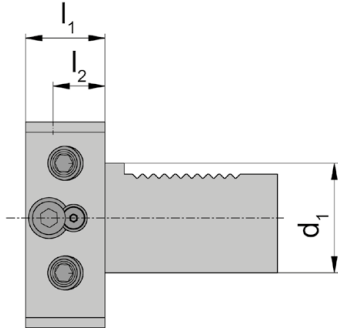
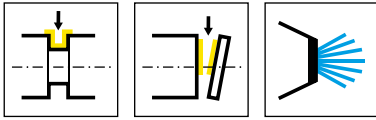
Recommandations de base

S'il vous plaît noter le Ø max de rotation des fabricants de machines.
Vérifier le Ø de rotation du mandrin pour le porte-outil.

Raccomandazioni fondamentali

Vi preghiamo di controllare l'ingombro di volteggio dell'utensile montato sulla torretta della vostra macchina considerando la lunghezza riportata in tabella.

Calcul voir „Détermination des données d'outils“ au début du chapitre.
Per il calcolo, vedere „Definizione dati utensile“ all'inizio del capitolo.



C

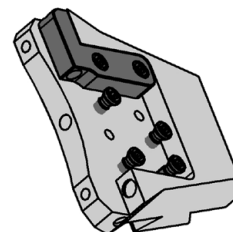
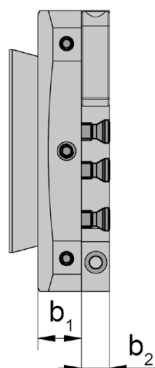
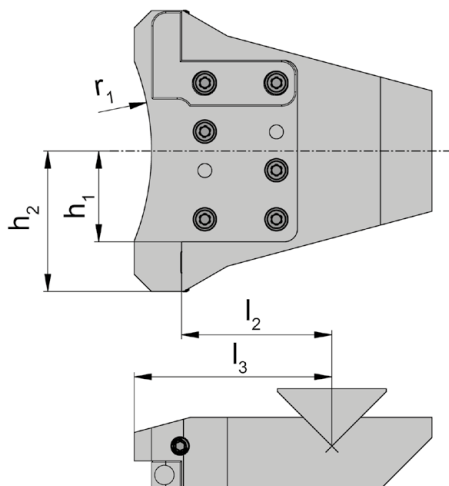
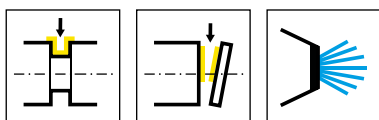
N° de commande Codice prodotto	l_2	b_2	b_1	l_1	d_1	HMS
960.VDI30.B0.00101	16	35	35	26	30	VDI30
960.VDI40.B0.00101	19	37	37	29	40	VDI40
960.VDI50.B0.00101	19	50	50	29	50	VDI50

Base de support 960.VDI30... et 960.VDI40... pour support cassette 960.Q.0.845.0000.IK

Base de support 960.VDI50... pour support cassette 960.Q.0.845.0001.IK

Attacco base 960.VDI30... e 960.VDI40... per portacartucce 960.Q.0.845.0000.IK

Attacco base 960.VDI50... per portacartucce 960.Q.0.845.0001.IK



C

N° de commande Codice prodotto	l ₂	l ₃	h ₁	h ₂	r ₁	b ₁	b ₂	HWS
960.Q.0.845.0000.IK	52,5	69	31,65	49	85	15,2	9,8	845001 • 845002
960.Q.0.845.0001.IK	35,5	50	31,65	49	85	15,2	9,8	845001 • 845002

Support cassettes pouvant être utilisé avec des cassettes à droite et à gauche.

Supporto base possono essere utilizzati sia su cartuccia destra che su cartuccia sinistra.

Base de support 960.VDI30... et 960.VDI40... pour support cassette 960.Q.0.845.0000.IK

Base de support 960.VDI50... pour support cassette 960.Q.0.845.0001.IK

Attacco base 960.VDI30... e 960.VDI40... per portacartucce 960.Q.0.845.0000.IK

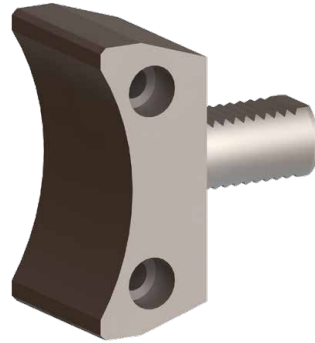
Attacco base 960.VDI50... per portacartucce 960.Q.0.845.0001.IK

Pièces Détachées

Ricambi

Support cassette Portacartucce per gole	Vis de serrage Vite di serraggio
960.Q.0.845.0000.IK	6.18T20P
960.Q.0.845.0001.IK	

pour Traub TNC 42/65
per Traub TNC 42/65



77...



R/L991.X842...R.IK



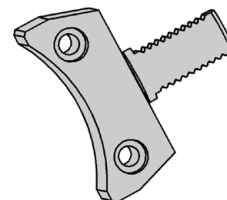
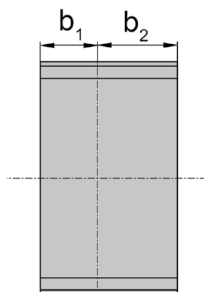
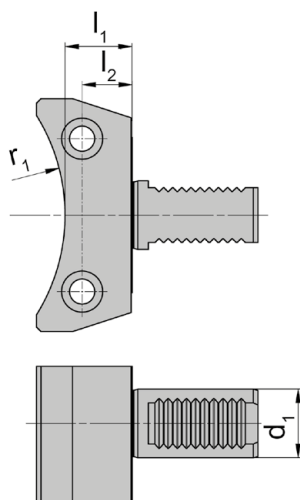
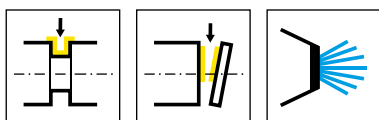
R/L991.X842...L.IK



RNK...0842...



LNK...0842...



N° de commande Codice prodotto	l_2	b_2	b_1	l_1	r_1	d_1	Type de machine Tipo macchina
776457	22	35	25	29,5	82,5	30	TRAUB TNC 42/65 - 10 Stations

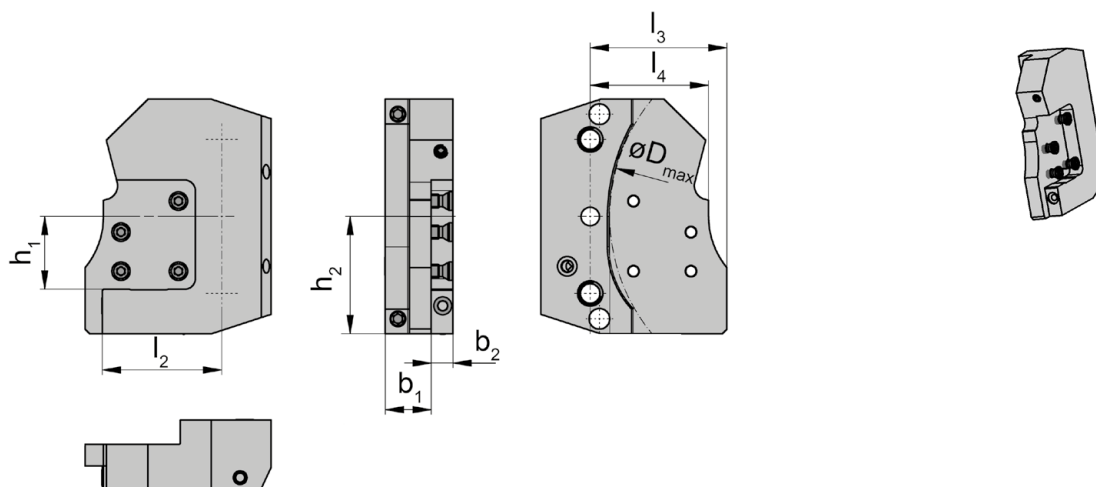
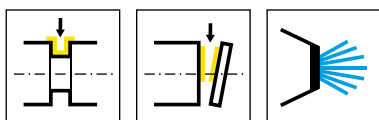


Illustration = R...R
Figura = R...R

L...L = version à gauche
L...L = versione sinistra a specchio

N° de commande Codice prodotto	l ₂	l ₃	l ₄	h ₁	h ₂	b ₁	b ₂	D _{max}	HWS	HMS
R991.X842.73102.L.IK	50	57,5	49,5	21	51	20	9,8	160	842001 • 842002	Index Traub
R991.X842.73102.R.IK	50	57,5	49,5	21	51	20,3	9,8	160	842001 • 842002	Index Traub
L991.X842.73102.L.IK	50	57,5	49,5	21	51	20	9,8	160	842001 • 842002	Index Traub
L991.X842.73102.R.IK	50	57,5	49,5	21	51	20,3	9,8	160	842001 • 842002	Index Traub

Support cassettes pouvant être utilisé avec des cassettes à droite et à gauche.
Supporto base possono essere utilizzati sia su cartuccia destra che su cartuccia sinistra.

Recommandation:

Support cassette ...L.IK pour cassettes à droite et support cassette ...R.IK pour cassettes à gauche.

Suggerimento:

Portacartucce ...L.IK per cartuccia destra e portacartucce ...R.IK per cartuccia sinistra.

Pièces Détachées

Ricambi

Support cassette Portacartucce per gole	Buse de pulvérisation d'arrosage Ugello nebulizzazione refrigerante	Vis de serrage Vite di serraggio	Tournevis TORX PLUS® Cacciavite TORX PLUS®
R/L991...	020.0806.3116	5.18T20P	T20PQ

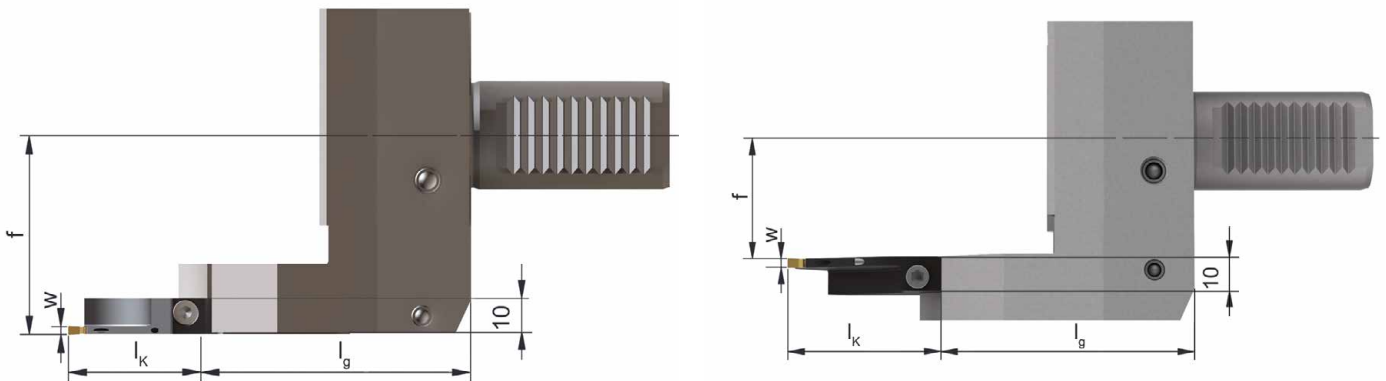
Détermination de la longueur de référence

Determinazione della lunghezza totale d'ingombro



extérieur
esterne

intérieur
interne



$$l_k \text{ (Longueur de la cassette)} + l_g \text{ (l}_2 \text{ Support cassette + l}_2 \text{ Base de support)}$$

$$l_k \text{ (Lunghezza cartuccia)} + l_g \text{ (l}_2 \text{ Portacartucce + l}_2 \text{ Supporto base)}$$

Illustration VDI
Figura VDI

Recommandations de base

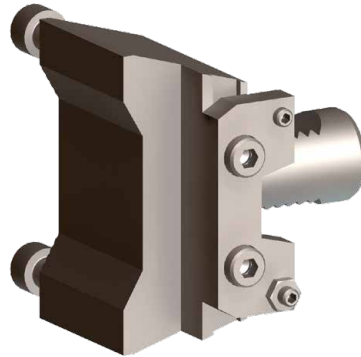
S'il vous plaît noter le \emptyset max de rotation des fabricants de machines.
Vérifier le \emptyset de rotation du mandrin pour le porte-outil.

Raccomandazioni fondamentali

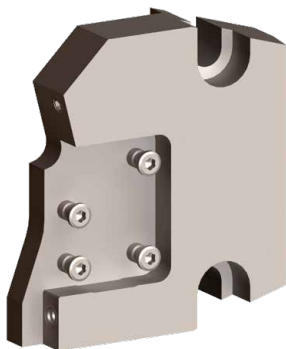
Vi preghiamo di controllare l'ingombro di volteggio dell'utensile montato sulla torretta della vostra macchina considerando la lunghezza riportata in tabella.

Base de support Attacco base	Support cassette Portacartucce		Support cassette Portacartucce	
	L991.X842...L.IK / R991.X842...R.IK		L991.X842...R.IK / R991.X842...L.IK	
	f	lg	f	lg
776457	55,2	72	35,1	72

pour Traub et Index
per Traub e Index



W13... / W14...



R/L990.X845...R.IK



R/L990.X845...L.IK

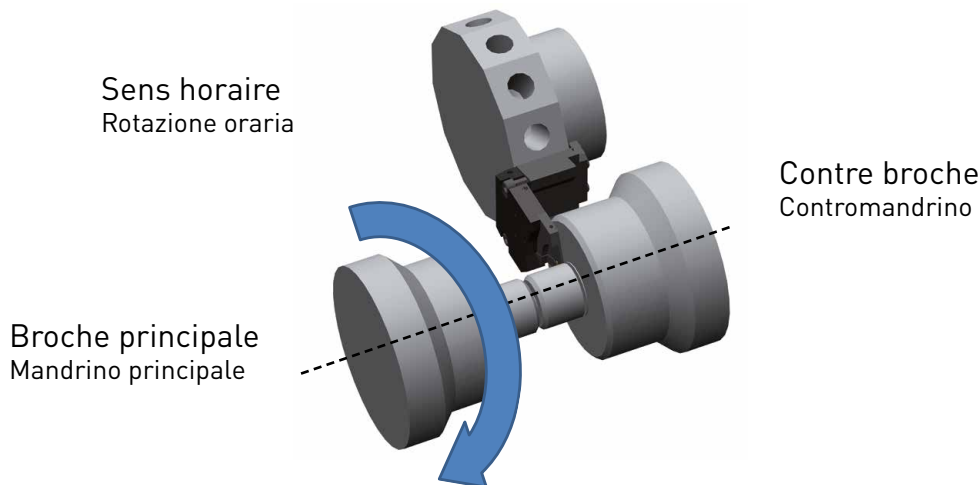


RNK100.0845...



LNK100.0845..

C



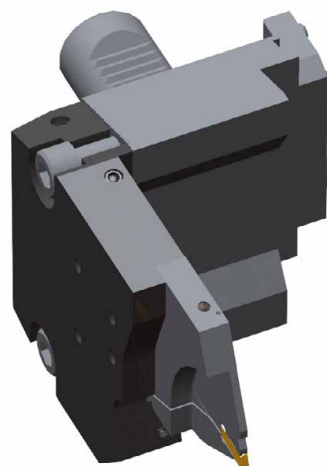
Tronçonnage sur le Broche de reprise,
rotation dans le sens antihoraire
Troncatura verso il contromandrino con
rotazione sinistra

Tronçonnage sur le Broche de reprise,
rotation dans le sens horaire
Troncatura verso il contromandrino con
rotazione destra



Support cassette
Portacaartucce
L990.X845...R.IK

Cassette
Cartuccia
RNK100.0845...

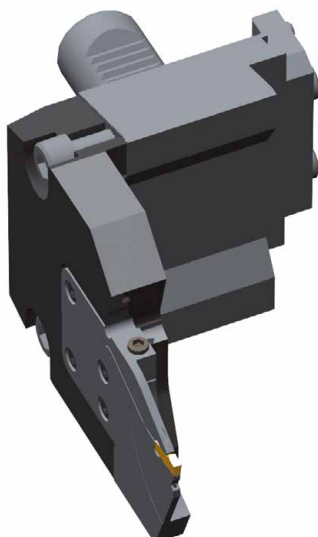


Support cassette
Portacaartucce
R990.X845...L.IK

Cassette
Cartuccia
LNK100.0845...

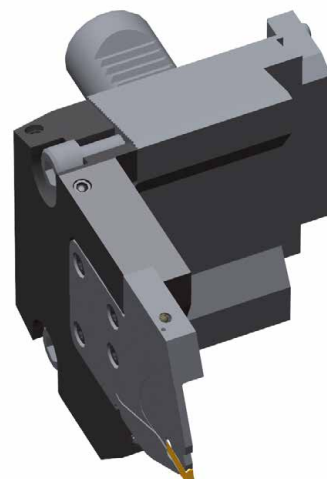
Tronçonnage sur la broche principale
en **rotation antihoraire**
Troncatura verso il mandrino principale con
rotazione sinistra

Tronçonnage sur la broche principale
en **rotation horaire**
Troncatura verso il mandrino principale con
rotazione destra



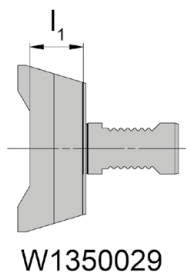
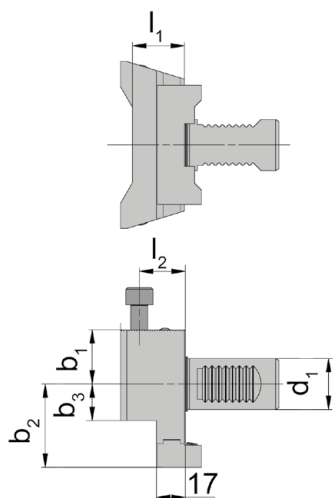
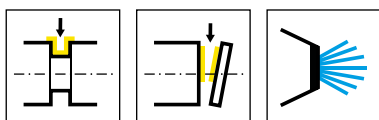
Support cassette
Portacaartucce
L990.X845...L.IK

Cassette
Cartuccia
LNK100.0845...

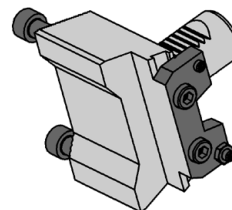


Support cassette
Portacaartucce
R990.X845...R.IK

Cassette
Cartuccia
RNK100.0845...



W1350029



C

N° de commande Codice prodotto	l_2	b_2	b_1	b_3	l_1	d_1	Type de machine Tipo macchina	Type Tipo	HWS	HMS
W1310001	27	45	31,85	21,5	30,5	30	Index C200/G160 G250/G300	V-Bande Allineamento V	Index Traub	Index Traub
W1340039	27	49	31,85	21,5	30,5	30	Traub TNX 42/65	T-Bande Allineamento T	Index Traub	Index Traub
W1350029	27,6	35	31,85	21,5	31	30	Index G220/G250/G300 C200Traub TNX42/65	W-Engrenage Allineamento W	Index Traub	Index Traub
W1410000	27	52,5	34,85	29	31	40	Index G220/G250 G400 Traub TNX80	V-Bande Allineamento V	Index Traub	Index Traub
W1440005	27	56,5	34,85	29	31	40	Traub TNX80	T-Bande Allineamento T	Index Traub	Index Traub
W1450018	27	42,5	34,85	2,5	31	40	Index G250	W-Engrenage Allineamento W	Index Traub	Index Traub

Pour W1450018 base de porte-outil qui ne sont plus en stock, le support et les cassettes de l'outil de rainurage sont encore disponibles.

La piastra base W1450018, con allineamento tipo W, non è più disponibile a stock

pour support cassette R990.X845... et L990.X845...
per portacartucce per gole R990.X845... et L990.X845...

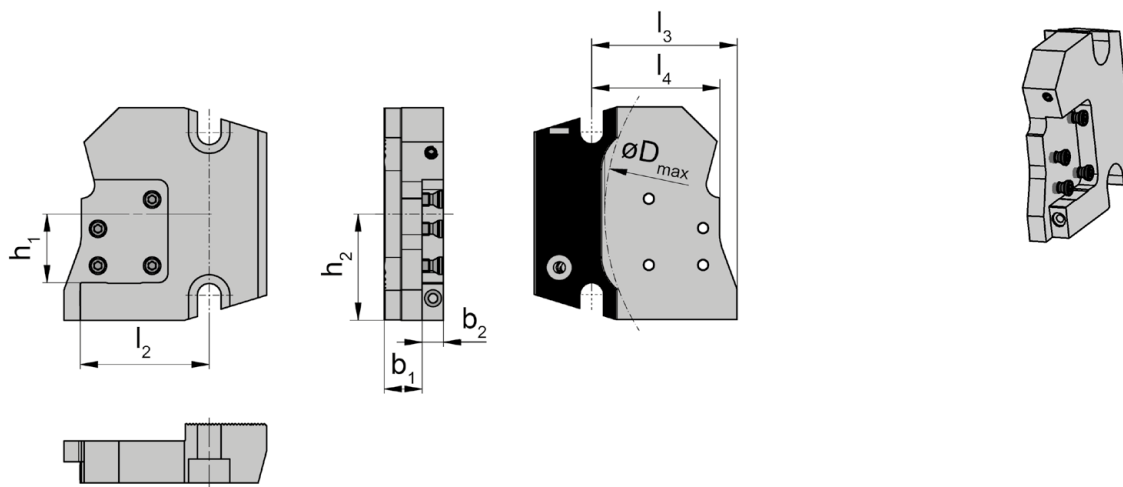
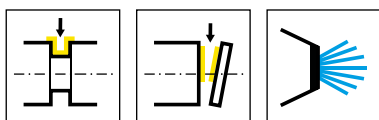


Illustration = R...R
Figura = R...R

L...L = version à gauche
L...L = versione sinistra a specchio

N° de commande Codice prodotto	l ₂	l ₃	l ₄	h ₁	h ₂	b ₁	b ₂	D _{max}	HWS	HMS
R990.X845.8698.L.IK	59,5	67	59	31,65	49	15	9,8	200	845001 • 845002	Index Traub
R990.X845.8698.R.IK	59,5	67	59	31,65	49	17,5	9,8	200	845001 • 845002	Index Traub
L990.X845.8698.L.IK	59,5	67	59	31,65	49	17,5	9,8	200	845001 • 845002	Index Traub
L990.X845.8698.R.IK	59,5	67	59	31,65	49	15	9,8	200	845001 • 845002	Index Traub

Support cassettes pouvant être utilisé avec des cassettes à droite et à gauche.
Supporto base possono essere utilizzati sia su cartuccia destra che su cartuccia sinistra.

Recommandation:

Support cassette ...L.IK pour cassettes à droite et support cassette ...R.IK pour cassettes à gauche.

Suggerimento:

Portacartucce ...L.IK per cartuccia destra e portacartucce ...R.IK per cartuccia sinistra.

Pièces Détachées

Ricambi

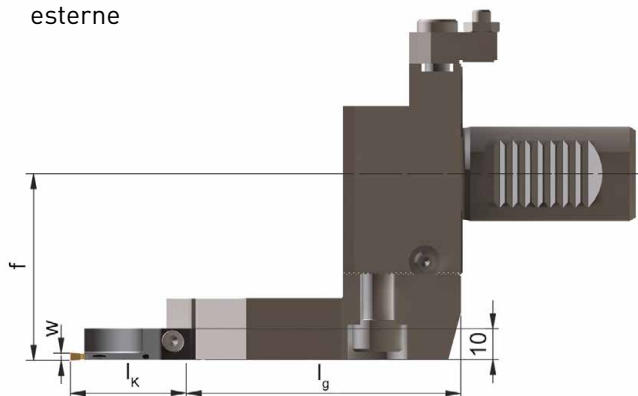
Support cassette Portacartucce per gole	Buse de pulvérisation d'arrosage Ugello nebulizzazione refrigerante	Vis de serrage Vite di serraggio	Tournevis TORX PLUS® Cacciavite TORX PLUS®
R/L990.X845.8698.L.IK	020.0806.3116	6.18T20P	T20PQ
R/L990.X845.8698.R.IK	020.0806.3116	6.18T20P	

Détermination de la longueur de référence

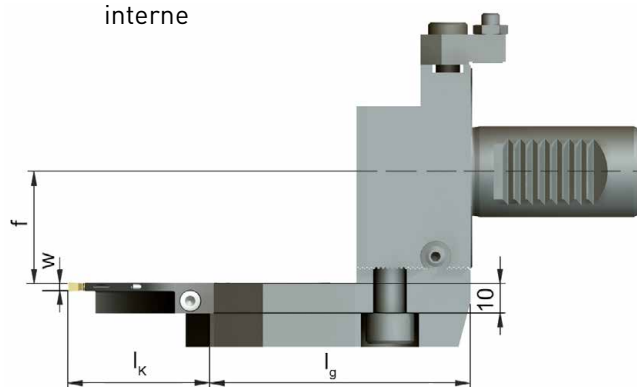
Determinazione della lunghezza totale d'ingombro



extérieur
esterne



intérieur
interne



$$l_k \text{ (Longueur de la cassette)} + l_g \text{ (l}_2 \text{ Support cassette + l}_2 \text{ Base de support)}$$

$$l_k \text{ (Lunghezza cartuccia)} + l_g \text{ (l}_2 \text{ Portacartucce + l}_2 \text{ Supporto base)}$$

Illustration VDI
Figura VDI

Recommandations de base

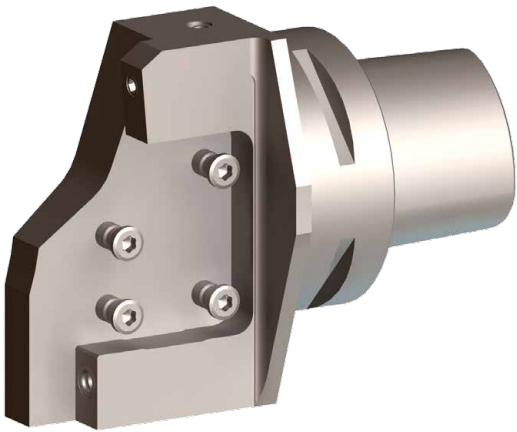
S'il vous plaît noter le Ø max de rotation des fabricants de machines.
Vérifier le Ø de rotation du mandrin pour le porte-outil.

Raccomandazioni fondamentali

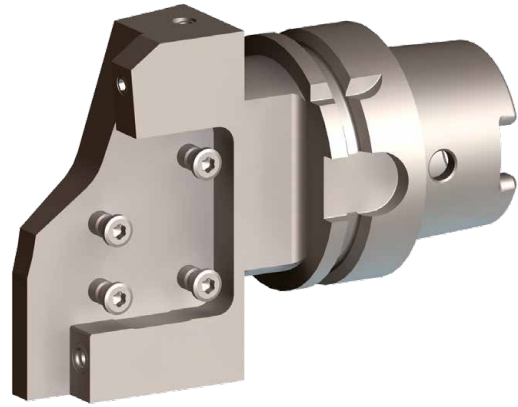
Vi preghiamo di controllare l'ingombro di volteggio dell'utensile montato sulla torretta della vostra macchina considerando la lunghezza riportata in tabella.

Base de support Attacco base	Support cassette Portacartucce		Support cassette Portacartucce	
	L990.X845...L.IK / R990.X845...R.IK		L990.X845...R.IK / R990.X845...L.IK	
	f	lg	f	lg
W1310001	59,55	86,5	36,65	86,5
W1340039	59,55	86,5	36,65	86,5
W1350029	59,55	87,1	36,65	87,1
W1410000	62,55	86,5	39,65	86,5
W1440005	62,55	86,5	39,65	86,5
W1450018	62,55	86,5	39,65	86,5

C



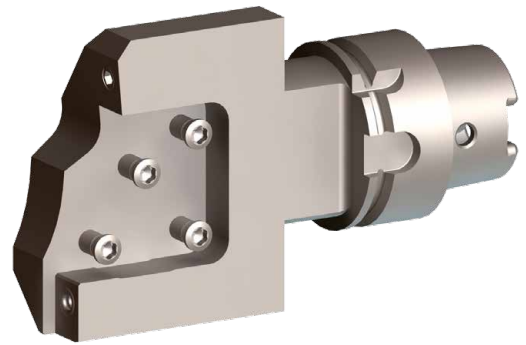
C3.../C5.../C6...



HSKT63...



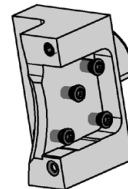
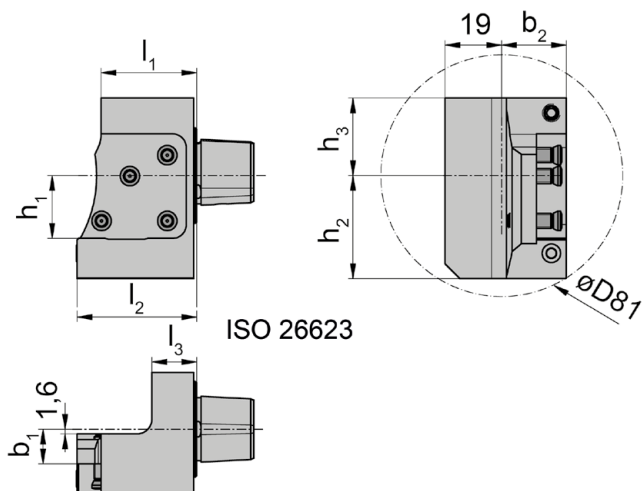
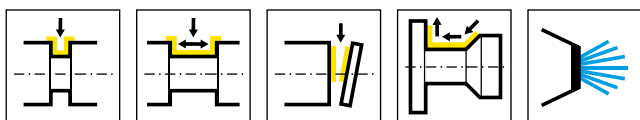
L/RNK...0842...
L/RNK...0845...



HSKT40...



L/RNK100.0842...



R = version à droite représentée
R = versione destra come in figura

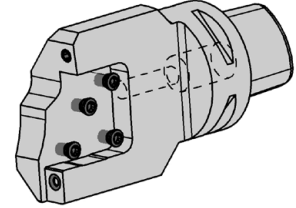
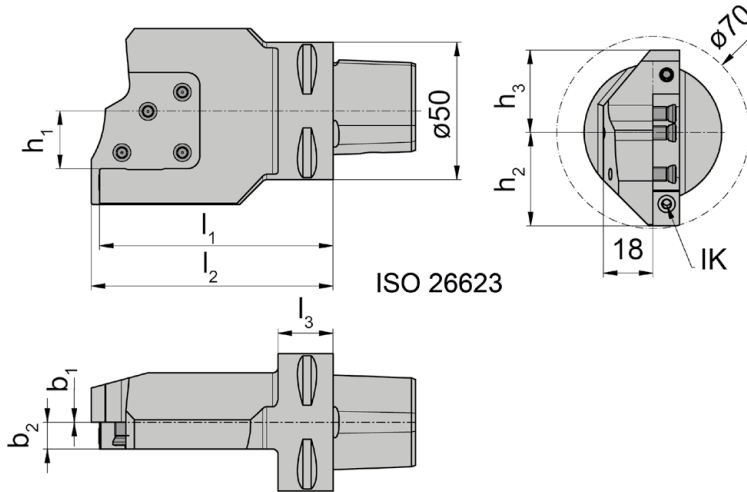
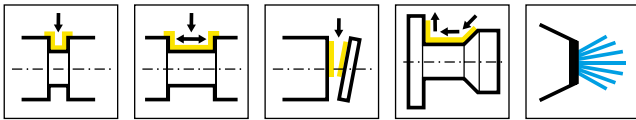
L = version à gauche
L = versione sinistra a specchio

N° de commande Codice prodotto	l ₂	l ₁	h ₁	h ₂	h ₃	b ₁	l ₃	b ₂	Type de machine Tipo macchina	HWS
C3.L842.A.01.K1	40	32	21	34,5	26	11,6	15	21,6	TRAUB TNL18/32	842001 • 842002
C3.R842.A.01.K1	40	32	21	34,5	26	11,6	15	21,6	TRAUB TNL18/32	842001 • 842002

Pièces Détachées

Ricambi

Base de support Attacco Base	Vis de serrage Vite di serraggio	Tournevis TORX PLUS® Cacciavite TORX PLUS®
C3...	5.18T20P	T20PQ



R = version à droite représentée
R = versione destra come in figura

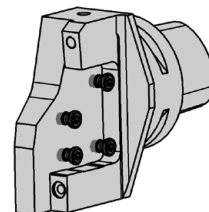
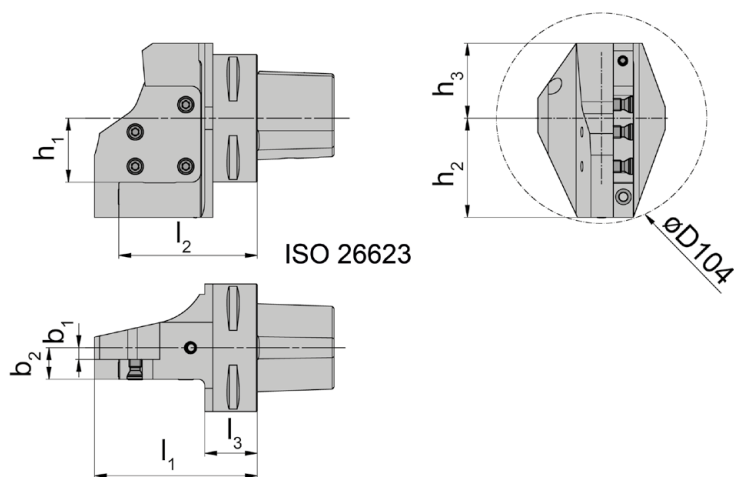
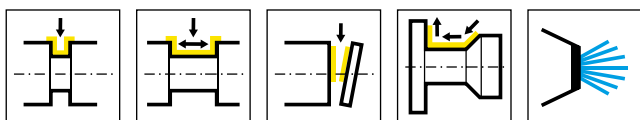
L = version à gauche
L = versione sinistra a specchio

N° de commande Codice prodotto	l ₂	l ₁	h ₁	h ₂	h ₃	b ₁	l ₃	b ₂	HWS
C5.R842.01.K1	88	85	21	34	30	0	25	18	842001 • 842002

Pièces Détachées

Ricambi

Base de support Attacco Base	Vis de serrage Vite di serraggio	Tournevis TORX PLUS® Cacciavite TORX PLUS®
C5.R842.01.K1	5.18T20P	T20PQ



R = version à droite représentée
R = versione destra come in figura

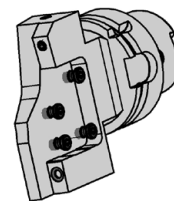
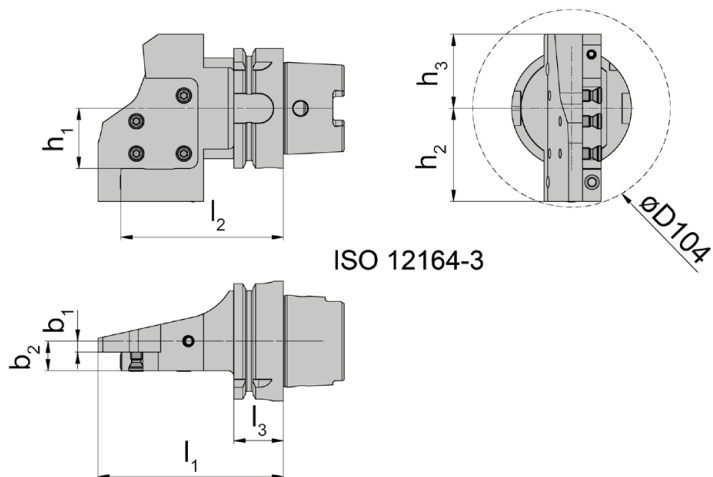
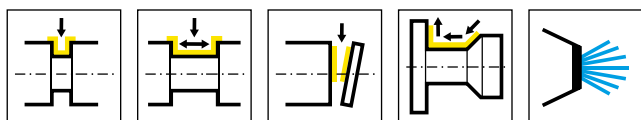
L = version à gauche
L = versione sinistra a specchio

N° de commande Codice prodotto	l ₂	l ₁	h ₁	h ₂	h ₃	b ₁	l ₃	b ₂	HWS
C6.L845.01.K1	68,5	80,5	31,65	49	37	5,8	22	15,6	845001 • 845002
C6.R845.01.K1	68,5	80,5	31,65	49	37	5,8	22	15,6	845001 • 845002
C8.L845.01.K1	77,5	80,5	31,65	49	40	5,8	31	15,6	845001 • 845002
C8.R845.01.K1	77,5	80,5	31,65	49	40	5,8	31	15,6	845001 • 845002

Pièces Détachées

Ricambi

Base de support Attacco Base	Vis de serrage Vite di serraggio	Tournevis TORX PLUS® Cacciavite TORX PLUS®
C6...	6.18T20P	T20PQ



R = version à droite représentée
R = versione destra come in figura

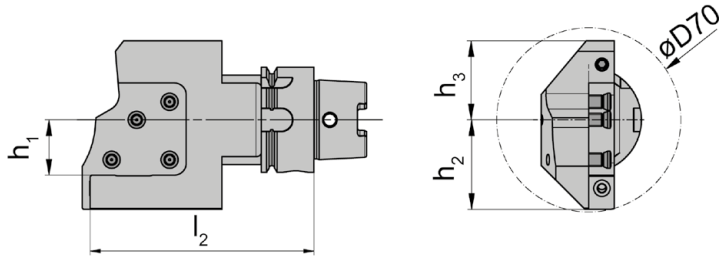
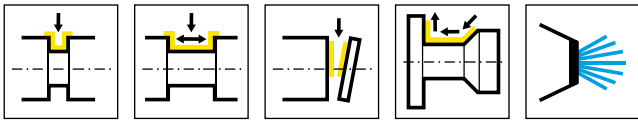
L = version à gauche
L = versione sinistra a specchio

N° de commande Codice prodotto	l ₂	l ₁	h ₁	h ₂	h ₃	l ₃	b ₂	HWS
HSKT63.L845.01.K1	85,5	97,5	31,65	49	39	26	15,6	845001 • 845002
HSKT63.R845.01.K1	85,5	97,5	31,65	49	39	26	15,6	845001 • 845002
HSKT100.L845.01.K1	-	-	31,65	49	50	28,95	15,6	845001 • 845002
HSKT100.R845.01.K1	-	-	31,65	49	50	28,95	15,6	845001 • 845002

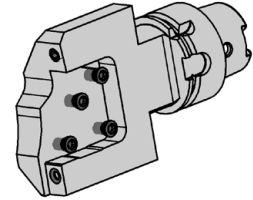
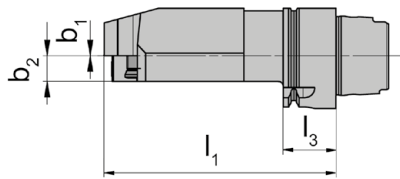
Pièces Détachées

Ricambi

Base de support Attacco Base	Vis de serrage Vite di serraggio	Tournevis TORX PLUS® Cacciavite TORX PLUS®
HSKT63...	6.18T20P	T20PQ



ISO 12164-3



R = version à droite représentée
R = versione destra come in figura

L = version à gauche
L = versione sinistra a specchio

N° de commande Codice prodotto	l_2	l_1	h_1	h_2	h_3	l_3	b_2	HWS
HSKT40.L842.01.K1	85	88	21	34	30	20	9,7	842001 • 842002
HSKT40.R842.01.K1	85	88	21	34	30	20	9,7	842001 • 842002

Pièces Détachées

Ricambi

Base de support Attacco Base	Vis de serrage Vite di serraggio	Tournevis TORX PLUS® Cacciavite TORX PLUS®
HSKT40...	5.18T20P	T20PQ

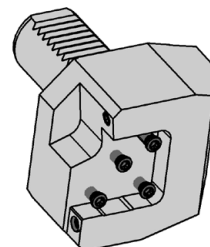
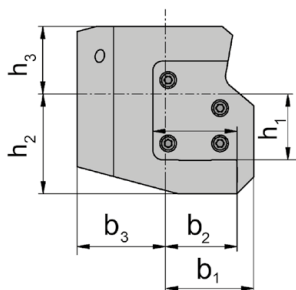
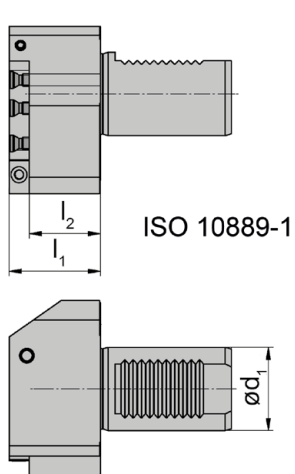
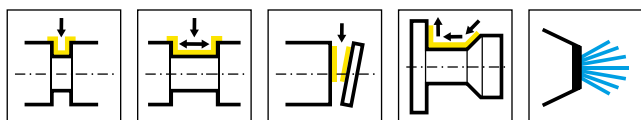


Illustration = Base de support type B1

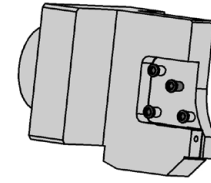
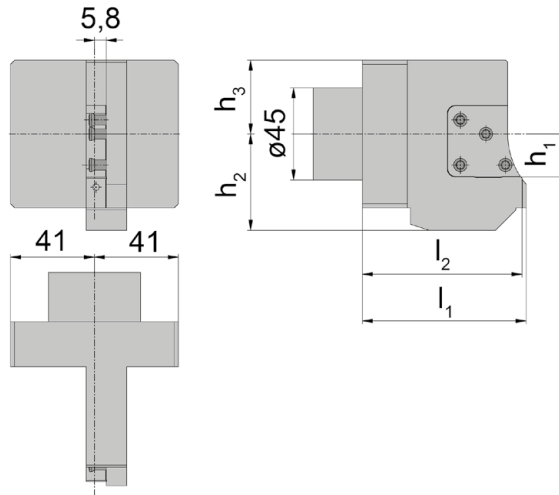
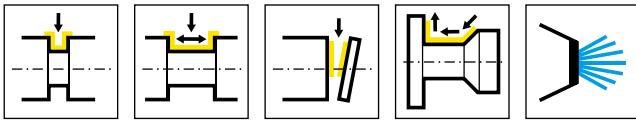
Figura = Supporto base tipo B1

N° de commande Codice prodotto	l_2	l_1	h_1	h_2	h_3	b_1	b_3	b_2	HWS	HMS
842.VDI30.B1.00101	30,3	40	21	26	22	35	35	33	842001 • 842002	VDI30
845.VDI40.B1.00101	34,3	44	31,65	48	32,5	42,5	42,5	34,5	845001 • 845002	VDI40
845.VDI40.B2.00101	34,3	44	31,65	48	32,5	42,5	42,5	34,5	845001 • 845002	VDI40

Pièces Détachées

Ricambi

Base de support Attacco Base	Vis de serrage Vite di serraggio	Tournevis TORX PLUS® Cacciavite TORX PLUS®
842.VDI30.B1.00101	5.18T20P	T20PQ
845.VDI40....	6.24T20P	T20PQ



R = version à droite représentée
R = versione destra come in figura

N° de commande Codice prodotto	l ₂	l ₁	h ₁	h ₃	h ₂	Type de machine Tipo macchina	HWS	HMS
842.TR01.R.01.K1	78	80	21	36	47	TRAUB TNL18/20/32 TNK42	842001 • 842002	Index Traub

Interface Traub
Interfaccia Traub

Pièces Détachées

Ricambi

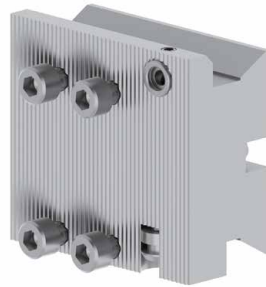
Base de support Attacco Base	Vis de serrage Vite di serraggio	Tournevis TORX PLUS® Cacciavite TORX PLUS®
842.TR01.R.01.K1	5.18T20P	T20PQ

pour INDEX
per INDEX

C



W1250031



W8900015



R/L940.X842...R.IK



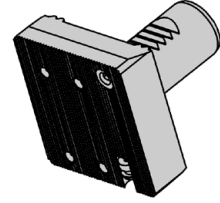
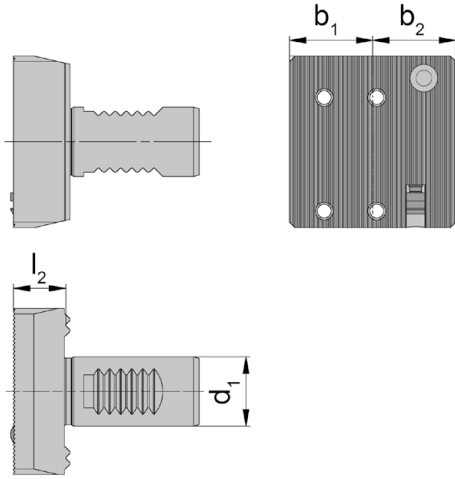
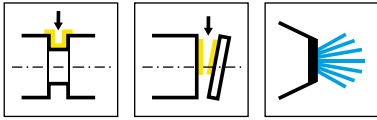
R/L940.X842...L.IK



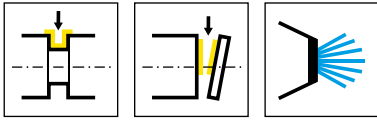
RNK100.0842...



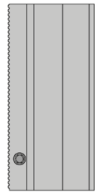
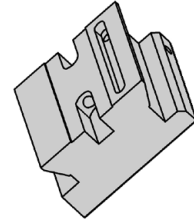
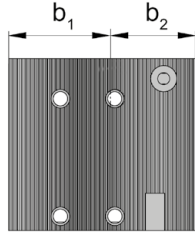
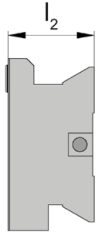
LNK100.0842...



N° de commande Codice prodotto	b ₂	b ₁	l ₂	d ₁	Type de machine Tipo macchina	HWS	HMS
W1250031	30	30	18,9	25	Index C42-65/C100/C200/G160/G250	Index Traub	Index Traub



C



N° de commande Codice prodotto	b ₂	b ₁	l ₂	Type de machine Tipo macchina	HWS	HMS
W8900015	28	37	29,5	Index ABC	Index Traub	Index Traub

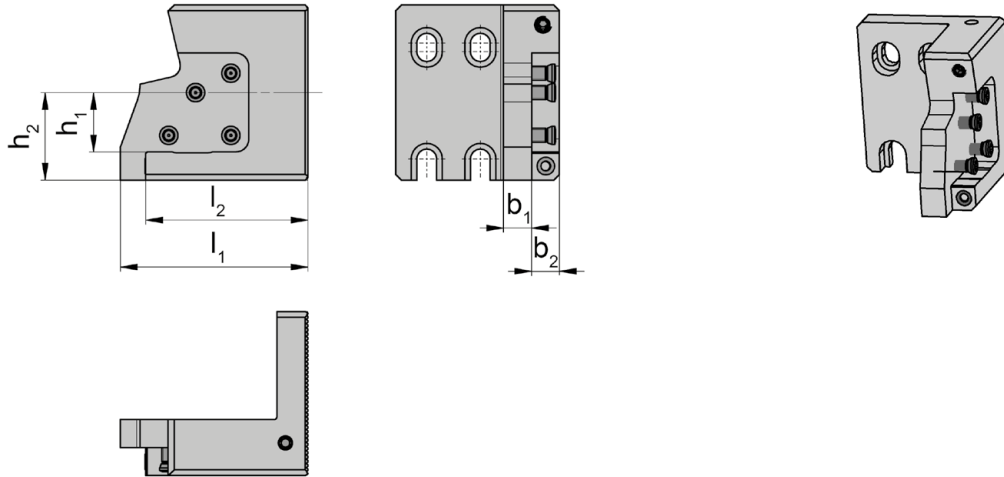
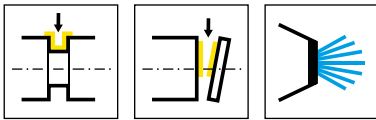


Illustration = R...R
Figura = R...R

L...L = version à gauche
L...L = versione sinistra a specchio

N° de commande Codice prodotto	l ₁	l ₂	h ₁	h ₂	b ₁	b ₂	HWS	HMS
R940.X842.5862.L.IK	66,5	57,5	21	31	10	9,8	842001 • 842002	Index Traub
R940.X842.5862.R.IK	66,5	57,5	21	31	10	9,8	842001 • 842002	Index Traub
L940.X842.5862.L.IK	66,5	57,5	21	31	10	9,8	842001 • 842002	Index Traub
L940.X842.5862.R.IK	66,5	57,5	21	31	10	9,8	842001 • 842002	Index Traub

Support cassettes pouvant être utilisé avec des cassettes à droite et à gauche.
Supporto base possono essere utilizzati sia su cartuccia destra che su cartuccia sinistra.

Recommandation:

Support cassette ...L.IK pour cassettes à droite et support cassette ...R.IK pour cassettes à gauche.

Suggerimento:

Portacartucce ...L.IK per cartuccia destra e portacartucce ...R.IK per cartuccia sinistra.

Pièces Détachées

Ricambi

Support cassette Portacartucce per gole	Vis de serrage Vite di serraggio	Tournevis TORX PLUS® Cacciavite TORX PLUS®
R/L940...	5.18T20P	T20PQ

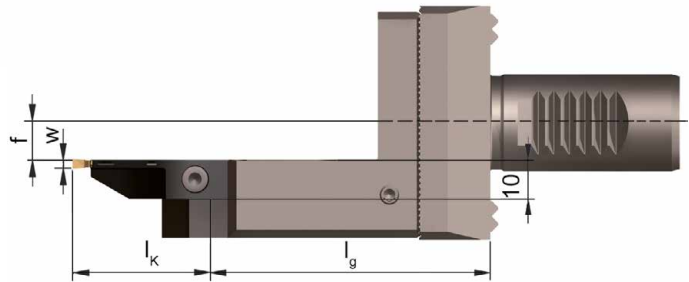
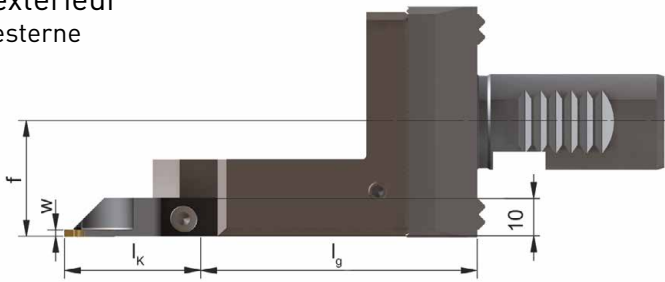
Détermination de la longueur de référence

Determinazione della lunghezza totale d'ingombro



extérieur
esterne

intérieur
interne



$$l_K \text{ (Longueur de la cassette) } + l_g \text{ (} l_2 \text{ Support cassette + } l_2 \text{ Base de support)}$$

$$l_K \text{ (Lunghezza cartuccia) } + l_g \text{ (} l_2 \text{ Portacartucce + } l_2 \text{ Supporto base)}$$

Illustration VDI
Figura VDI

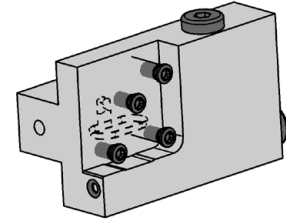
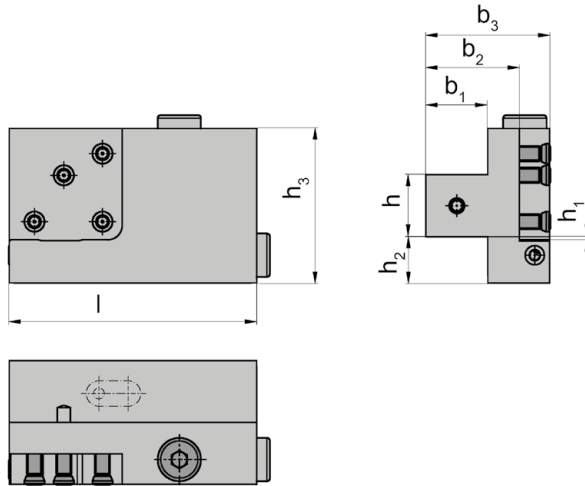
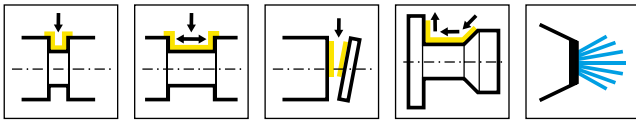
Recommandations de base

S'il vous plaît noter le Ø max de rotation des fabricants de machines.
Vérifier le Ø de rotation du mandrin pour le porte-outil.

Raccomandazioni fondamentali

Vi preghiamo di controllare l'ingombro di volteggio dell'utensile montato sulla torretta della vostra macchina considerando la lunghezza riportata in tabella.

Base de support Attacco base	Support cassette Portacartucce		Support cassette Portacartucce	
	L940.X842...L.IK / R940.X842...R.IK		L940.X842...R.IK / R940.X842...L.IK	
	f	lg	f	lg
W1250031	19,7	76,4	9,1	76,4



R = version à droite représentée
R = versione destra come in figura

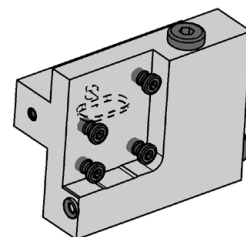
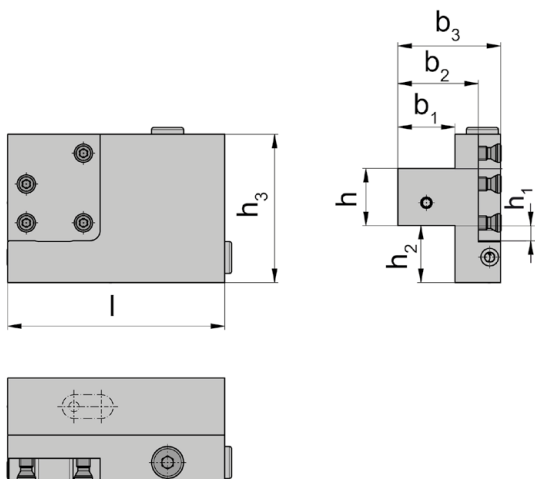
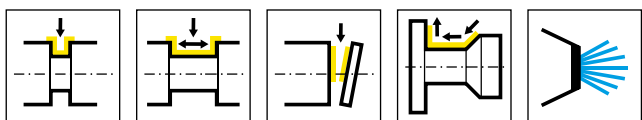
L = version à gauche
L = versione sinistra a specchio

N° de commande Codice prodotto	h	b ₁	l	h ₃	b ₃	b ₂	h ₁	h ₂	HWS
R842.1616.K1.IK	16	16	65	50	40	30,2	5	19	842001 • 842002
R842.2525.K1.IK	25	25	95	50	45	35,5	4	10	842001 • 842002
L842.1616.K1.IK	16	16	65	50	40	30,2	5	19	842001 • 842002
L842.2020.K1.IK	20	20	80	50	40	30,2	1	15	842001 • 842002
L842.2525.K1.IK	25	25	95	50	45	35,5	4	10	842001 • 842002

Pièces Détachées

Ricambi

Base de support Attacco Base	Vis de serrage Vite di serraggio	Tournevis TORX PLUS® Cacciavite TORX PLUS®	Vis Vite
R/L842...	5.18T20P	T20PQ	004.00.26
L842.2020.K1.IK	5.18T20P	T20PQ	004.00.26



R = version à droite représentée
R = versione destra come in figura

L = version à gauche
L = versione sinistra a specchio

N° de commande Codice prodotto	h	b ₁	l	h ₃	b ₃	b ₂	h ₁	h ₂	HWS
R845.2020.K1.IK	20	20	80	65	40	30	11,65	30	845001 • 845002
R845.2525.K1.IK	25	25	95	65	45	35	6,65	25	845001 • 845002
L845.2020.K1.IK	20	20	80	65	40	30	11,65	30	845001 • 845002
L845.2525.K1.IK	25	25	95	65	45	35	6,65	25	845001 • 845002

Pièces Détachées

Ricambi

Base de support Attacco Base	Vis de serrage Vite di serraggio	Tournevis TORX PLUS® Cacciavite TORX PLUS®	Vis Vite
R/L845...	6.18T20P	T20PQ	004.00.26