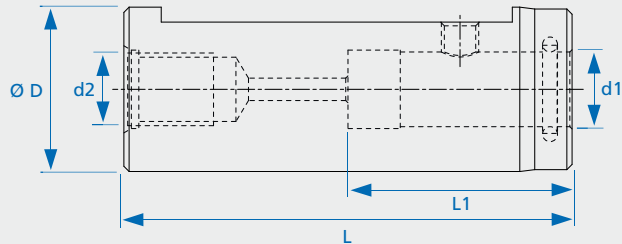
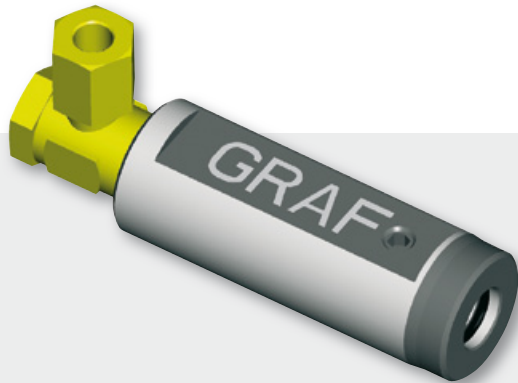


GRAF Bohrerhalter für Einlippenbohrer mit Innenkühlung

GRAF drill holder for single-flute drills with coolant supply

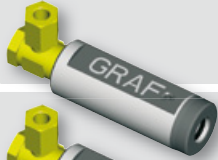
GRAF mandrin pour mèche à canon avec raccord pour canal d'arrosage



Reduzierhülsen müssen separat bestellt werden! Siehe Seite 52

Adapter sleeve must be ordered separately! See page 52

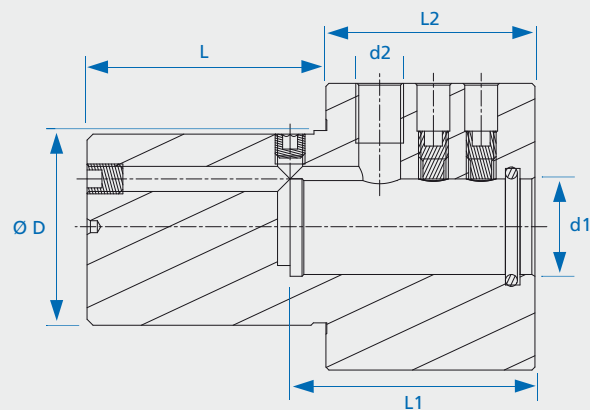
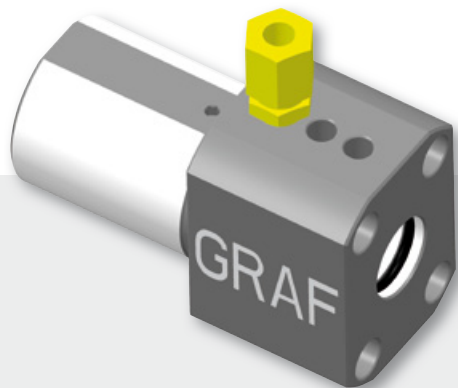
Vous trouverez les douilles de réduction commandée séparément, voir pages 52

	Bestell-Nr.	Ø D	L	L1	d 1	d 2
	BHE 72.3450.06	3/4"	50	30	6	G 1/8"
	BHE 72.3450.08	3/4"	50	30	8	G 1/8"
	BHE 72.3460.10	3/4"	60	30	10	G 1/8"
	BHE 72.34100.10	3/4"	100	30	10	G 1/8"
	BHE 72.2050.10	20	50	30	10	G 1/8"
	BHE 72.2060.10	20	60	30	10	G 1/8"
	BHE 72.1060.10	1"	60	30	10	G 1/8"
	BHE 72.1060.12	1"	60	41	12	G 1/8"
	BHE 72.1060.14	1"	60	41	14	G 1/8"
	BHE 72.1060.16	1"	60	42	16	G 1/8"
	BHE 72.2560.16	25	60	42	16	G 1/8"
	BHE 72.32150.16	32	150	45	16	G 1/4"
	BHE 72.2560.16	25	60	42	16	G 1/8"
	BHE 72.25150.16	25	150	45	16	G 1/4"
	BHE 72.1660.10	16	60	30	10	G 1/8"
	BHE 72.22100.10	22	100	30	10	G 1/8"
	BHE 72.2260.06	22	60	30	6	G 1/8"
	BHE 72.2260.08	22	60	30	8	G 1/8"
	BHE 72.2260.10	22	60	30	10	G 1/8"
	BHE 72.2260.12	22	60	30	12	G 1/8"
	BHE 72.2275.16	22	75	42	16	G 1/8"
	BHE 72.2295.16	22	95	45	16	G 1/8"
	BHE 72.32100.16	32	100	45	16	G 1/8"
	BHE 72.32100.18	32	100	45	18	G 1/8"
BHE 72.32100.20	32	100	45	20	G 1/8"	
	BHE 72.28100.8	28	100	30	8	M12 x 1.5
	BHE 72.28100.12	28	100	42	12	M12 x 1.5
	BHE 72.28100.16	28	100	42	16	M12 x 1.5

GRAF Bohrerhalter für Einlippenbohrer mit Innenkühlung

GRAF drill holder for single-flute drills with coolant supply

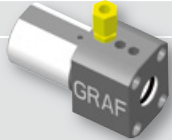
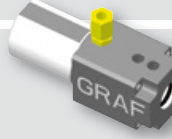
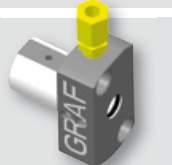
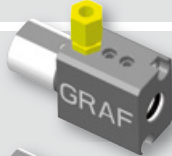
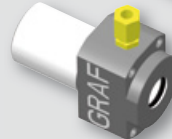
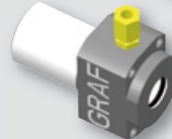
GRAF mandrin pour mèche à canon avec raccord pour canal d'arrosage



Reduzierhülsen müssen separat bestellt werden! Siehe Seite 52

Adapter sleeve must be ordered separately! See page 52

Vous trouverez les douilles de réduction commandée séparément, voir pages 52

	Bestell-Nr.	Ø D	L	L 1	L 2	d 1	d 2
 HANWHA-Maschinen	BHE 73.3225.16	32	25	41	35	16	M8 x 1
	BHE 73.3225.20	32	25	41	35	20	M8 x 1
	BHE 73.3340.16	33	40	41	35	16	M8 x 1
	BHE 73.3340.20	33	40	41	35	20	M8 x 1
 MAIER-Maschinen	BHE 73.3444.16	34	44	41	52	16	M8 x 1
	BHE 73.3444.20	34	44	41	52	20	M8 x 1
	BHE 73.3444.25	34	44	41	52	25	M8 x 1
	BHE 73.3444.254	34	44	41	52	1"	M8 x 1
 STAR-Maschinen	BHE 73.2225.06	22	25	30	17	6	M8 x 1
	BHE 73.2225.08	22	25	30	17	8	M8 x 1
	BHE 73.2225.10	22	25	30	17	10	M8 x 1
	BHE 73.2225.12	22	25	41	17	12	M8 x 1
	BHE 73.2225.16	22	25	41	44	16	M8 x 1
	BHE 73.2230.16-SR32	22	30	41	50	16	M8 x 1
	BHE 73.1621.12	16	21	31	33	12	G 1/8"
	BHE 73.1621.10	16	21	31	33	10	G 1/8"
 MANURHIN-Maschinen	BHE 73.022.024.08	22	24	42	38	8	M8 x 1
	BHE 73.022.024.10	22	24	42	38	10	M8 x 1
	BHE 73.022.024.12	22	24	42	38	12	M8 x 1
 CITIZEN-Maschinen	BHE 73.25150.16	25	150	41	-	16	G 1/8"
	BHE 73.25120.08	25	120	31	-	8	G 1/8"
 CITIZEN-Maschinen	BHE 73 1040.16	1"	40	68	34.5	16	G1/8"
	BHE 73 1040.20	1"	40	68	34.5	20	G1/8"
	BHE 73 1040.25	1"	40	68	34.5	25	G1/8"
	BHE 73 1060.16	1"	60	42	20	16	M8x1
	BHE 73 2530.06	25	30	30	17	6	M8x1
	BHE 73 2530.16	25	30	42	17	16	M8x1