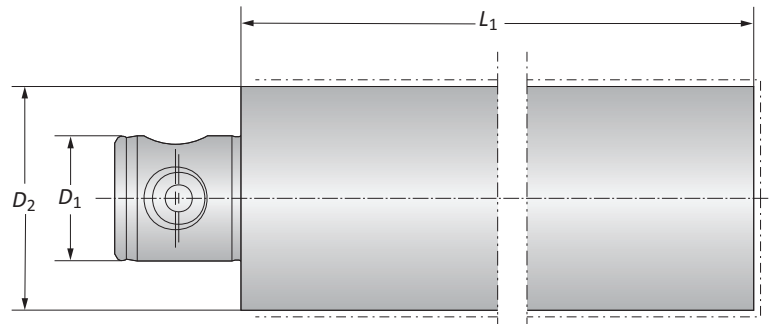
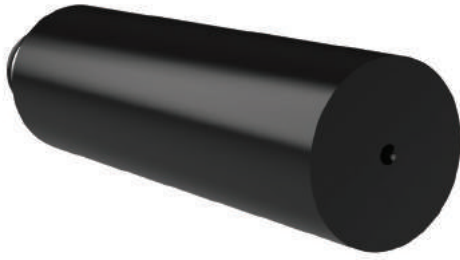


## Boring Bar Blanks



**NOTE:** The blanks are unhardened and unground in areas marked

MVS Connection	Boring Bar Blanks		
$D_2   D_1$	$L_1$	Weight	Part No.
50 - 28	160.00	2.60 (kg)	<b>166103</b>
63 - 36	160.00	4.20 (kg)	<b>166104</b>
80 - 36	160.00	6.60 (kg)	<b>166105</b>

