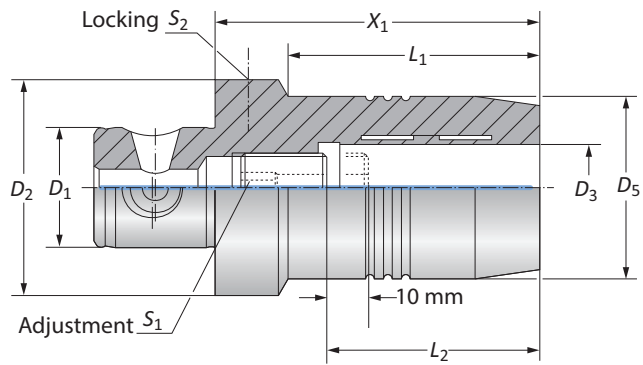



## Clamping Chucks | Tapping Chucks

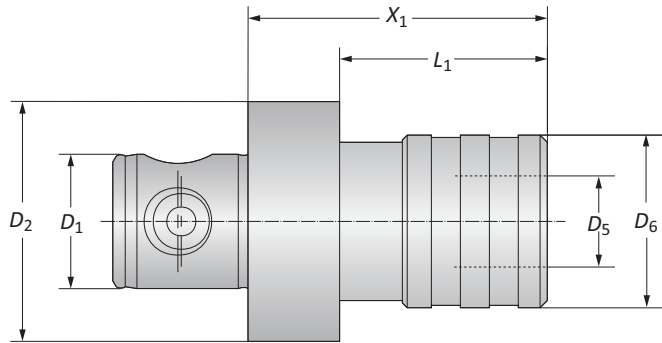
Clamping Range: 20.00 mm




### Though Coolant Hydraulic Clamping Chucks

MVS Connection	Clamping Range	Clamping Chucks							Weight	Part No.
		$D_2$   $D_1$	$D_3$	$X_1$	$D_5$	$L_1$	$L_2$	$S_1$		
	50 - 28	20.00	75.00	42.00	58.00	51.00	s6	s5	0.80 (kg)	209044
	63 - 36	20.00	75.00	42.00	53.00	51.00	s5	s5	1.10 (kg)	209045

Note: Balanced corresponds to a specific residual imbalance of  $\leq 10$  gmm/kg.

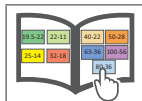
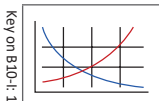


### Tapping Chucks (Non-Coolant)

MVS Connection	Quick Change Adapters		Tapping Chucks				Length Compensation		Weight	Part No.	
	For Taps	Nominal Size	$X_1$	$L_1$	$D_5$	$D_6$	Pressure	Tension			
	50 - 28	M 3 - M 12	1	62.00	49.00	19.00	41.50	7.50	7.50	0.70 (kg)	209098
	50 - 28	M 6 - M 20	2	94.00	-	31.00	60.30	10.00	10.00	1.10 (kg)	209099
	63 - 36	M 3 - M 12	1	56.00	43.00	19.00	41.50	7.50	7.50	0.80 (kg)	231005
	63 - 36	M 6 - M 20	2	80.00	67.00	31.00	60.30	10.00	10.00	1.30 (kg)	231006
	63 - 36	M 14 - M 33	3	152.00	-	48.00	86.00	17.50	17.50	4.10 (kg)	231007

B10-M: 12-13

B10: VI-VII



 = Metric (mm)