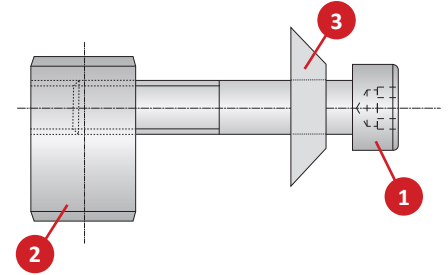


537 Accessories

Clamping Pieces | Counter Weight | Insert Holders for Abrasive Materials

537 Clamping Pieces

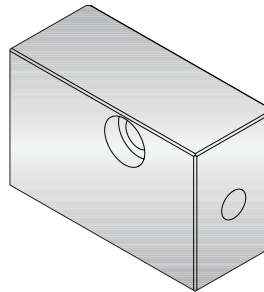
Slide Type	Complete Part No.	Service Key		Replacement Components		
				1 Cap Screw	2 Clamping Nut	3 Disk Spring
Serrated Tool Bodies	137026	115578	s6 / B	215101	140118	337105
Basic and Eco Slides	137027			215102	215105	337105
Flex Slides	137019			415900	215105	337105



NOTE: Clamping pieces sold separately

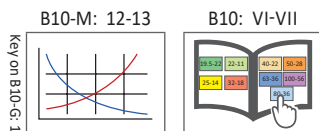
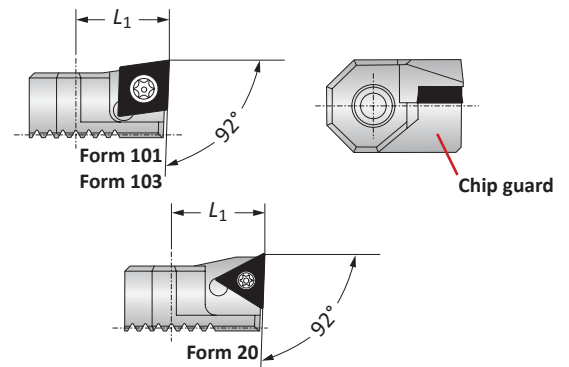
537 Counter Weight

Boring Range	Part No.
m 100.00 - 3255.00	537055



Insert Holders for Abrasive Materials

Boring Range	L_1	Weight	Insert Form	Part No.
m 100.00 - 3255.00	18.00	0.03 (kg)	20	211061
100.00 - 3255.00	18.00	0.03 (kg)	101	211063
100.00 - 3255.00	18.00	0.03 (kg)	103	211065



m = Metric (mm)

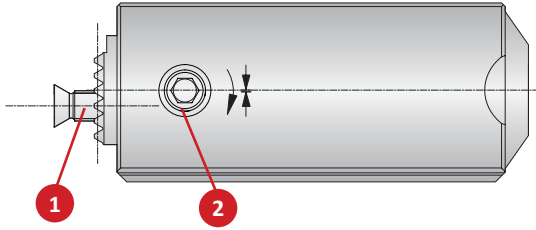
Inserts sold separately

WARNING Exceeding weight capacity for machine tool spindle and tool changer can cause machine damage and/or serious injury. To prevent:
 -Consult machine tool builder for machine's weight limitations.
 -Refer to example on page B10-M: 11 for calculating tool assembly weight
 Factory technical assistance is also available for specific applications through our Application Engineering department. *email: engineering.eu@alliedmachine.com*

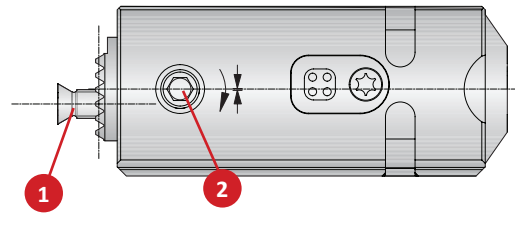
WARNING Tool failure can cause serious injury. To prevent:
 -Do not exceed recommended 10xD length-to-diameter ratio or exceed 4 total components (including shank)
 -When using Alu-Line® components, do not exceed recommended 5xD length-to-diameter ratio
 -When using tool steel components, do not exceed recommended 6xD length-to-diameter ratio
 -When using heavy metal components, do not exceed recommended 8xD length-to-diameter ratio
 -When using a carbide shank, do not exceed recommended 9xD length-to-diameter ratio
 -When using a NOVITECH module, do not exceed recommended 10xD length-to-diameter ratio
 -Refer to examples on pages B10-M: 8-10 for calculating length-to-diameter ratio
 Factory technical assistance is available for your specific applications through our Application Engineering department. *email: engineering.eu@alliedmachine.com*

537 Accessories | 3E^{TECH+} Accessories

Accessories



537 Analogue Cassette



537 Digital Cassette

537 Accessories

Cassette Part No.	1 Countersunk Screw		2 Clamping Screw	
	Part No.	Service Key	Part No.	Service Key
537051	215462	T20 / H	115249	s4 / F
537052	215462	T20 / H	315789	s4 / F

3E^{TECH+} Accessories

1 Charging Unit
Part No.
536016

NOTE: Charging unit sold separately from 3E^{TECH+}

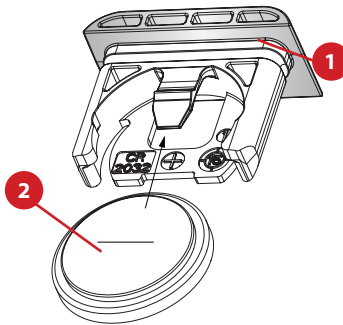


NOTE: 3E^{TECH+} adjustment accuracy of 0.001 mm on diameter

3E^{TECH} Accessories (Old Display)

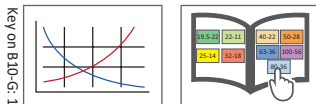
1 Sealing Ring	2 Battery CR2032
Part No.	Part No.
215483	515491

NOTE: Not required for 3E^{TECH+} (New Display)



B10-M: 12-13

B10: VI-VII



m = Metric (mm)

Inserts sold separately

WARNING Exceeding weight capacity for machine tool spindle and tool changer can cause machine damage and/or serious injury. To prevent:

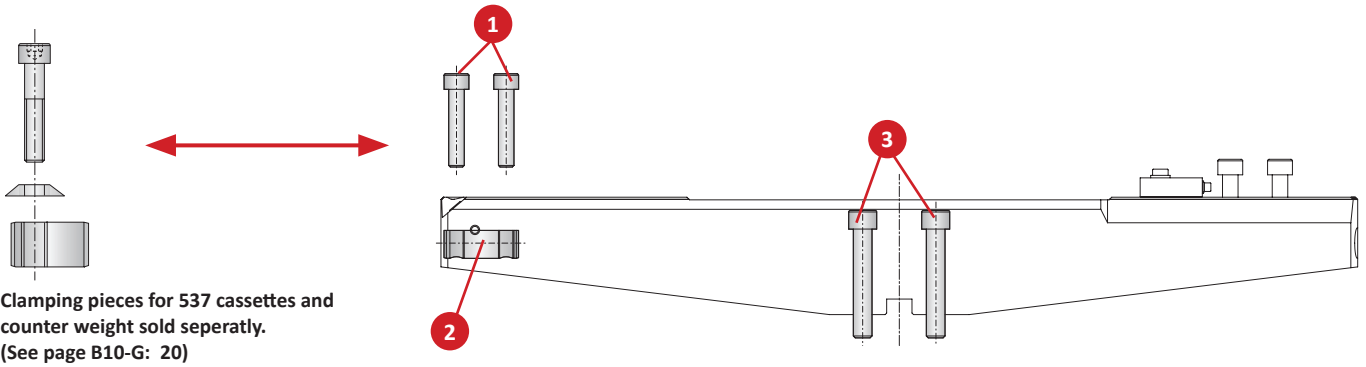
- Consult machine tool builder for machine's weight limitations.
 - Refer to example on page B10-M: 11 for calculating tool assembly weight
- Factory technical assistance is also available for specific applications through our Application Engineering department. *email: engineering.eu@alliedmachine.com*

WARNING Tool failure can cause serious injury. To prevent:

- Do not exceed recommended 10xD length-to-diameter ratio or exceed 4 total components (including shank)
 - When using Alu-Line® components, do not exceed recommended 5xD length-to-diameter ratio
 - When using tool steel components, do not exceed recommended 6xD length-to-diameter ratio
 - When using heavy metal components, do not exceed recommended 8xD length-to-diameter ratio
 - When using a carbide shank, do not exceed recommended 9xD length-to-diameter ratio
 - When using a NOVITECH module, do not exceed recommended 10xD length-to-diameter ratio
 - Refer to examples on pages B10-M: 8-10 for calculating length-to-diameter ratio
- Factory technical assistance is available for your specific applications through our Application Engineering department. *email: engineering.eu@alliedmachine.com*

Serrated Slide Basic D 40 Accessories

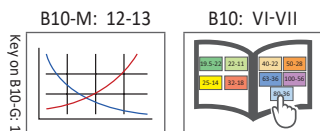
Clamping Pieces



Clamping pieces for 537 cassettes and counter weight sold separately. (See page B10-G: 20)

Clamping Pieces

Connection	Serrated Slide	1 Cap Screw		2 Clamping Nut	3 Thread Pin		Cap Screw		
	Part No.	Part No.	Service Key	Part No.	Part No.	Service Key	Part No.	Service Key	
m	D 40	349021	115118	s8 / B	115669	349010	s4 / F	315186	s10 / C
	D 40	349022	115118	s8 / B	115669	349011	s4 / F	315186	s10 / C
	D 40	349023	115118	s8 / B	115669	349012	s4 / F	315186	s10 / C
	D 40	349024	115118	s8 / B	115669	349013	s4 / F	315186	s10 / C



m = Metric (mm)

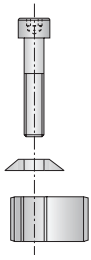
WARNING Exceeding weight capacity for machine tool spindle and tool changer can cause machine damage and/or serious injury. To prevent:
 -Consult machine tool builder for machine's weight limitations.
 -Refer to example on page B10-M: 11 for calculating tool assembly weight
 Factory technical assistance is also available for specific applications through our Application Engineering department. *email: engineering.eu@alliedmachine.com*

WARNING Tool failure can cause serious injury. To prevent:
 -Do not exceed recommended 10xD length-to-diameter ratio or exceed 4 total components (including shank)
 -When using Alu-Line® components, do not exceed recommended 5xD length-to-diameter ratio
 -When using tool steel components, do not exceed recommended 6xD length-to-diameter ratio
 -When using heavy metal components, do not exceed recommended 8xD length-to-diameter ratio
 -When using a carbide shank, do not exceed recommended 9xD length-to-diameter ratio
 -When using a NOVITECH module, do not exceed recommended 10xD length-to-diameter ratio
 -Refer to examples on pages B10-M: 8-10 for calculating length-to-diameter ratio
 Factory technical assistance is available for your specific applications through our Application Engineering department. *email: engineering.eu@alliedmachine.com*

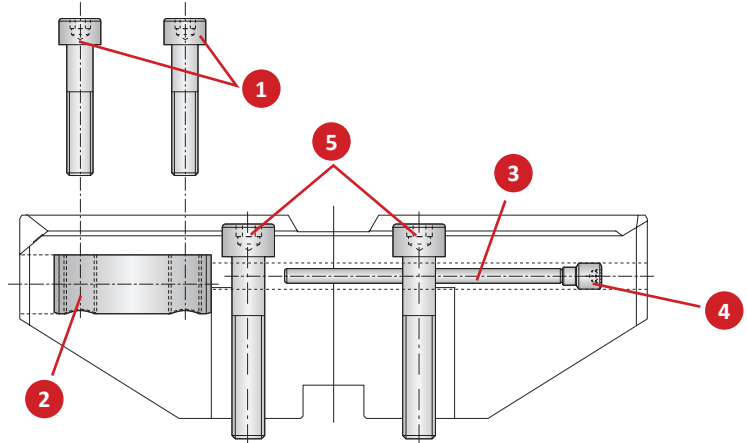


Serrated Slide Basic D 60 Accessories

Clamping Pieces | Cover Plates

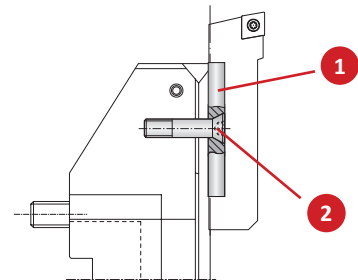


Clamping pieces for 537 cassettes and counter weight sold separately. (See page B10-G: 20)



Cover Plates for Basic D 60 Serrated Slides

Connection	Serrated Slide Part No.	1 Cover Plate			2 Countersunk Screw	
		Part No.	Part No.	Part No.	Service Key	
m	D 60	349051	349016	063106	s4 / B	
	D 60	349052	349017	063106	s4 / B	
	D 60	349053	349017	063106	s4 / B	
	D 60	349054	349017	063106	s4 / B	



B10-M: 12-13 B10: VI-VII

key on B10-G: 1

m = Metric (mm)

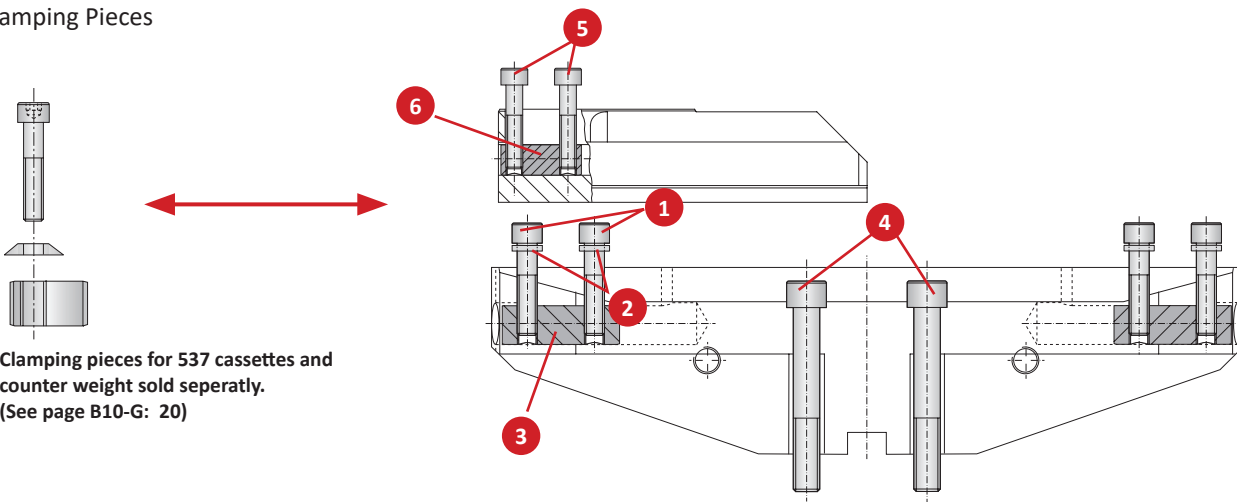
WARNING Exceeding weight capacity for machine tool spindle and tool changer can cause machine damage and/or serious injury. To prevent:
 -Consult machine tool builder for machine's weight limitations.
 -Refer to example on page B10-M: 11 for calculating tool assembly weight
 Factory technical assistance is also available for specific applications through our Application Engineering department. *email: engineering.eu@alliedmachine.com*

WARNING Tool failure can cause serious injury. To prevent:
 -Do not exceed recommended 10xD length-to-diameter ratio or exceed 4 total components (including shank)
 -When using Alu-Line® components, do not exceed recommended 5xD length-to-diameter ratio
 -When using tool steel components, do not exceed recommended 6xD length-to-diameter ratio
 -When using heavy metal components, do not exceed recommended 8xD length-to-diameter ratio
 -When using a carbide shank, do not exceed recommended 9xD length-to-diameter ratio
 -When using a NOVITECH® module, do not exceed recommended 10xD length-to-diameter ratio
 -Refer to examples on pages B10-M: 8-10 for calculating length-to-diameter ratio
 Factory technical assistance is available for your specific applications through our Application Engineering department. *email: engineering.eu@alliedmachine.com*

A
B
C
D
E
F
G
H
I
J
K
L
M
INDEX

Serrated Slide Eco D 60 Accessories

Clamping Pieces



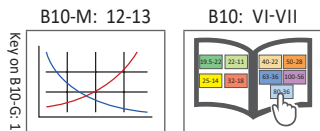
Clamping pieces for 537 cassettes and counter weight sold separately. (See page B10-G: 20)

Base Slide Clamping Pieces

Connection	Base Slide Part No.	1 Cap Screw		2 Disc Part No.	3 Clamping Nut Part No.	4 Cap Screw	
		Part No.	Service Key			Part No.	Service Key
m D 60	349005	115771	s10 / C	115737	415181	077128	s14 / C
	349006	115771	s10 / C	115737	415181	077128	s14 / C

Serrated Slide Clamping Pieces

Serrated Slide Part No.	5 Cap Screw		6 Clamping Nut Part No.
	Part No.	Service Key	
m 349014	115118	s8 / B	115669
	349015	115118	s8 / B



m = Metric (mm)

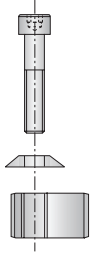
WARNING Exceeding weight capacity for machine tool spindle and tool changer can cause machine damage and/or serious injury. To prevent:
 -Consult machine tool builder for machine's weight limitations.
 -Refer to example on page B10-M: 11 for calculating tool assembly weight
 Factory technical assistance is also available for specific applications through our Application Engineering department. *email: engineering.eu@alliedmachine.com*

WARNING Tool failure can cause serious injury. To prevent:
 -Do not exceed recommended 10xD length-to-diameter ratio or exceed 4 total components (including shank)
 -When using Alu-Line® components, do not exceed recommended 5xD length-to-diameter ratio
 -When using tool steel components, do not exceed recommended 6xD length-to-diameter ratio
 -When using heavy metal components, do not exceed recommended 8xD length-to-diameter ratio
 -When using a carbide shank, do not exceed recommended 9xD length-to-diameter ratio
 -When using a NOVITECH module, do not exceed recommended 10xD length-to-diameter ratio
 -Refer to examples on pages B10-M: 8-10 for calculating length-to-diameter ratio
 Factory technical assistance is available for your specific applications through our Application Engineering department. *email: engineering.eu@alliedmachine.com*

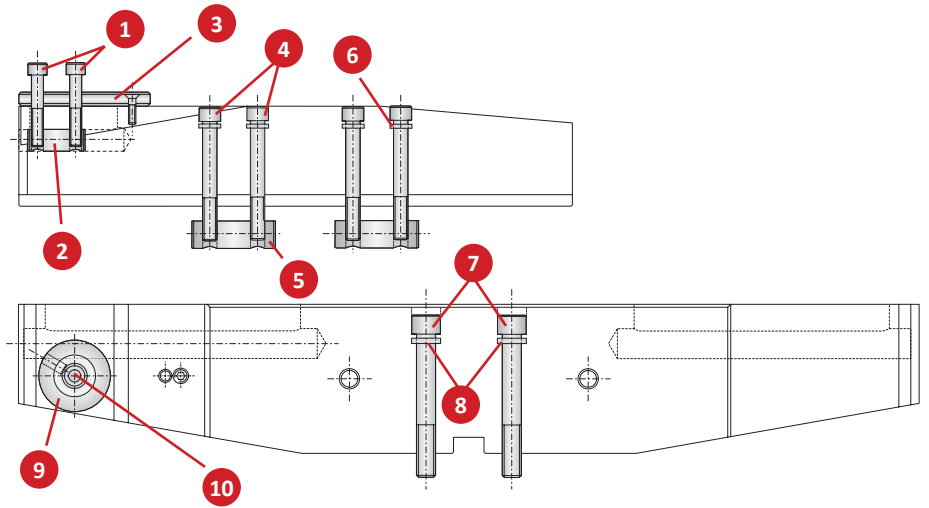
A
B
C
D
E
F
G
H
I
J
K
L
M
INDEX

Serrated Slide Flex D 60 Accessories

Clamping Pieces



Clamping pieces for 537 cassettes and counter weight sold separately. (See page B10-G: 20)

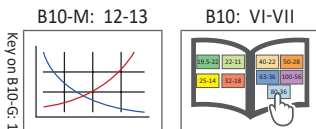


Serrated Slide Clamping Pieces

Serrated Slide	1 Cap Screw		2 Clamping Nut		3 Adapter		4 Cap Screw		5 Clamping Nut		6 Disk
	Part No.	Service Key	Part No.	Service Key	Part No.	Service Key	Part No.	Service Key	Part No.	Part No.	
m	349035	115307	s8 / B	115669	349043	s4 / B	315186	s10 / C	349202	115737	
	349036	115307	s8 / B	115669	349043	s4 / B	077110	s10 / C	415181	115737	
	349037	115307	s8 / B	115669	349043	s4 / B	315403	s10 / C	415181	115737	
	349038	115307	s8 / B	115669	349043	s4 / B	315415	s10 / C	415181	115737	

Base Slide Clamping Pieces

Connection	Base Slide	7 Cap Screw		8 Disk	9 Injector	10 Countersunk Screw		
	Part No.	Part No.	Service Key	Part No.	Part No.	Part No.	Service Key	
m	D 60	349031	115736	s14 / C	068168	349201	415898	s6 / B
	D 60	349032	415913	s14 / C	068168	349201	415898	s6 / B
	D 60	349033	215509	s14 / C	068168	349201	415898	s6 / B
	D 60	349034	415636	s14 / C	068168	349201	415898	s6 / B



m = Metric (mm)

WARNING Exceeding weight capacity for machine tool spindle and tool changer can cause machine damage and/or serious injury. To prevent:
 -Consult machine tool builder for machine's weight limitations.
 -Refer to example on page B10-M: 11 for calculating tool assembly weight
 Factory technical assistance is also available for specific applications through our Application Engineering department. *email: engineering.eu@alliedmachine.com*

WARNING Tool failure can cause serious injury. To prevent:
 -Do not exceed recommended 10xD length-to-diameter ratio or exceed 4 total components (including shank)
 -When using Alu-Line® components, do not exceed recommended 5xD length-to-diameter ratio
 -When using tool steel components, do not exceed recommended 6xD length-to-diameter ratio
 -When using heavy metal components, do not exceed recommended 8xD length-to-diameter ratio
 -When using a carbide shank, do not exceed recommended 9xD length-to-diameter ratio
 -When using a NOVITECH module, do not exceed recommended 10xD length-to-diameter ratio
 -Refer to examples on pages B10-M: 8-10 for calculating length-to-diameter ratio
 Factory technical assistance is available for your specific applications through our Application Engineering department. *email: engineering.eu@alliedmachine.com*