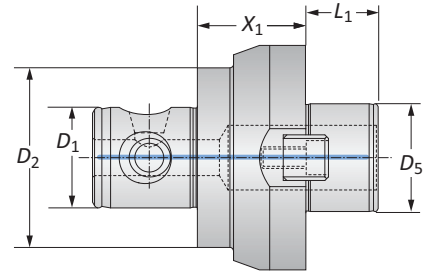
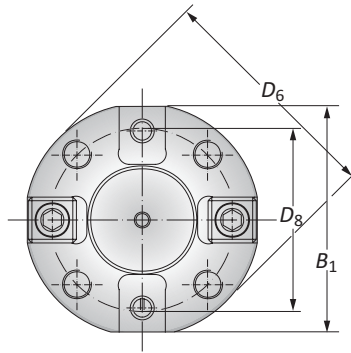




MVS Holding Arbors D 40 / D 60



MVS Connection	Holding Arbor Connection	Holding Arbor						Weight	Part No.
		X_1	L_1	D_5	D_6	D_8	B_1		
$D_2 D_1$									
80 - 36	D 40 Alu-Line	19.00	30.00	40.00	89.00	66.70	80.00	0.50 (kg)	309001 ⁽¹⁾⁽²⁾
80 - 36	D 60	60.00	40.00	60.00	129.10	101.60	125.00	4.10 (kg)	209060 ⁽¹⁾
100 - 56	D 40 Alu-Line	30.00	30.00	40.00	89.00	66.70	80.00	1.00 (kg)	309041 ⁽²⁾
100 - 56	D 60	60.00	40.00	60.00	129.10	101.60	125.00	6.30 (kg)	209043
100 - 56	D 60 Alu-Line	60.00	40.00	60.00	129.10	101.60	125.00	2.20 (kg)	309043 ⁽²⁾

(1) For light machining only

(2) Lightweight aluminium construction only in connection with our serrated slides

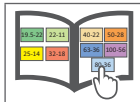
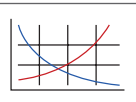
Basic D 40 Serrated Slides: \varnothing 200.00 - 520.00 mm (Page B10-E: 4)

Basic D 60 Serrated Slides: \varnothing 200.00 - 505.00 mm (Page B10-E: 5)

B10-M: 12-13

B10: VI-VII

Key on B10-G: 1



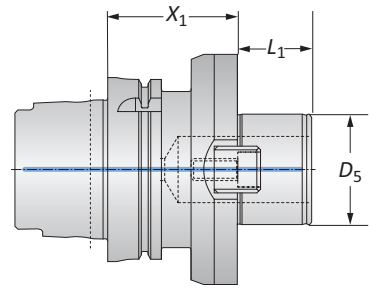
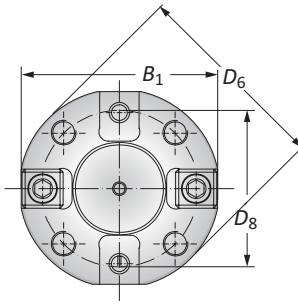
m = Metric (mm)

WARNING Exceeding weight capacity for machine tool spindle and tool changer can cause machine damage and/or serious injury. To prevent:
 -Consult machine tool builder for machine's weight limitations.
 -Refer to example on page B10-M: 11 for calculating tool assembly weight
 Factory technical assistance is also available for specific applications through our Application Engineering department. *email: engineering.eu@alliedmachine.com*

WARNING Tool failure can cause serious injury. To prevent:
 -Do not exceed recommended 10xD length-to-diameter ratio or exceed 4 total components (including shank)
 -When using Alu-Line® components, do not exceed recommended 5xD length-to-diameter ratio
 -When using tool steel components, do not exceed recommended 6xD length-to-diameter ratio
 -When using heavy metal components, do not exceed recommended 8xD length-to-diameter ratio
 -When using a carbide shank, do not exceed recommended 9xD length-to-diameter ratio
 -When using a NOVITECH® module, do not exceed recommended 10xD length-to-diameter ratio
 -Refer to examples on pages B10-M: 8-10 for calculating length-to-diameter ratio
 Factory technical assistance is available for your specific applications through our Application Engineering department. *email: engineering.eu@alliedmachine.com*

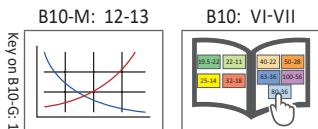
Master Shanks D 40 / D 60

HSK-A (DIN 69 893) Shanks



HSK-A (DIN 69 893) Shanks

Taper Size	Connection	Shank							Weight	Part No.
		X_1	L_1	D_5	D_6	D_8	B_1			
63	D 40	60.00	30.00	40.00	89.00	66.70	80.00	1.90 (kg)	358015	
100	D 40	60.00	30.00	40.00	89.00	66.70	80.00	3.60 (kg)	258021	
100	D 60	70.00	40.00	60.00	129.10	101.60	125.00	5.20 (kg)	258061	
100	D 60	70.00	40.00	60.00	129.10	101.60	110.00	5.00 (kg)	258098	



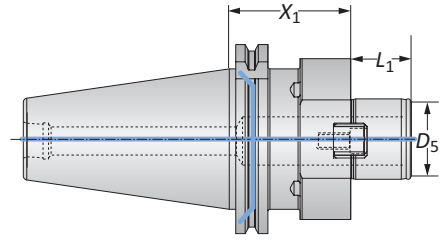
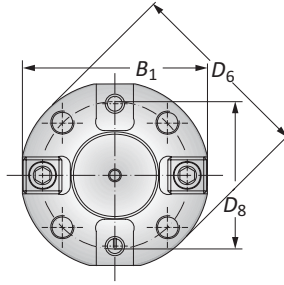
Ⓜ = Metric (mm)

⚠ WARNING Exceeding weight capacity for machine tool spindle and tool changer can cause machine damage and/or serious injury. To prevent:
 -Consult machine tool builder for machine's weight limitations.
 -Refer to example on page B10-M: 11 for calculating tool assembly weight
 Factory technical assistance is also available for specific applications through our Application Engineering department. *email: engineering.eu@alliedmachine.com*


⚠ WARNING Tool failure can cause serious injury. To prevent:
 -Do not exceed recommended 10xD length-to-diameter ratio or exceed 4 total components (including shank)
 -When using Alu-Line® components, do not exceed recommended 5xD length-to-diameter ratio
 -When using tool steel components, do not exceed recommended 6xD length-to-diameter ratio
 -When using heavy metal components, do not exceed recommended 8xD length-to-diameter ratio
 -When using a carbide shank, do not exceed recommended 9xD length-to-diameter ratio
 -When using a NOVI^{TECH} module, do not exceed recommended 10xD length-to-diameter ratio
 -Refer to examples on pages B10-M: 8-10 for calculating length-to-diameter ratio
 Factory technical assistance is available for your specific applications through our Application Engineering department. *email: engineering.eu@alliedmachine.com*

Master Shanks D 40

CAT 50 Shank with Metric Threads



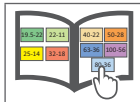
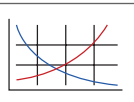
CAT 50 Shanks with Metric Threads

Taper Size	Connection	Shank						Weight	Part No.
		X_1	L_1	D_5	D_6	D_8	B_1		
 50	D 40	60.00	30.00	40.00	89.00	66.70	80.00	4.60 (kg)	326083

B10-M: 12-13

B10: VI-VII

Key on B10-G: I



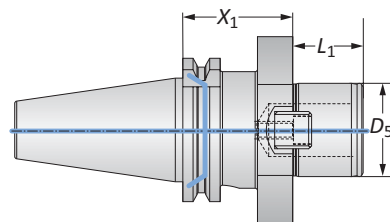
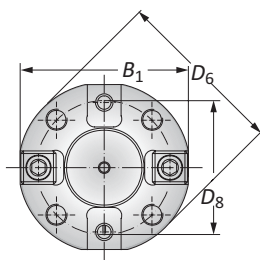
 = Metric (mm)

⚠ WARNING Exceeding weight capacity for machine tool spindle and tool changer can cause machine damage and/or serious injury. To prevent:
 -Consult machine tool builder for machine's weight limitations.
 -Refer to example on page B10-M: 11 for calculating tool assembly weight
 Factory technical assistance is also available for specific applications through our Application Engineering department. *email: engineering.eu@alliedmachine.com*

⚠ WARNING Tool failure can cause serious injury. To prevent:
 -Do not exceed recommended 10xD length-to-diameter ratio or exceed 4 total components (including shank)
 -When using Alu-Line® components, do not exceed recommended 5xD length-to-diameter ratio
 -When using tool steel components, do not exceed recommended 6xD length-to-diameter ratio
 -When using heavy metal components, do not exceed recommended 8xD length-to-diameter ratio
 -When using a carbide shank, do not exceed recommended 9xD length-to-diameter ratio
 -When using a NOVITECH® module, do not exceed recommended 10xD length-to-diameter ratio
 -Refer to examples on pages B10-M: 8-10 for calculating length-to-diameter ratio
 Factory technical assistance is available for your specific applications through our Application Engineering department. *email: engineering.eu@alliedmachine.com*

Master Shanks D 40 / D 60

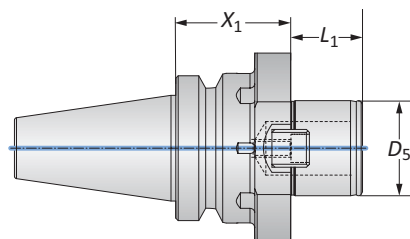
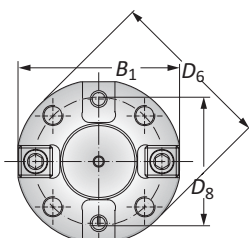
SK (DIN 69 871-AD/B) | BT / JIS B 6339 Shanks



SK (DIN 69 871-AD/B) Shanks

Taper Size	Connection	Shank							Weight	Part No.
		X_1	L_1	D_5	D_6	D_8	B_1			
40	D 40	50.00	30.00	40.00	89.00	66.70	80.00	1.90 (kg)	326080*	
50	D 40	50.00	30.00	40.00	89.00	66.70	80.00	4.10 (kg)	326081	
50	D 60	70.00	40.00	60.00	129.10	101.60	125.00	5.80 (kg)	198054T019539	
50	D 60	70.00	40.00	60.00	129.10	101.60	110.00	5.50 (kg)	198081T019539	

*For light machining only

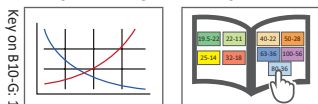


BT / JIS B 6339 Shanks

Taper Size	Connection	Shank							Weight	Part No.
		X_1	L_1	D_5	D_6	D_8	B_1			
40	D 40	50.00	30.00	40.00	89.00	66.70	80.00	1.80 (kg)	326084	
50	D 40	55.00	30.00	40.00	89.00	66.70	80.00	4.50 (kg)	326082	
50	D 60	80.00	40.00	60.00	19.10	101.60	-	8.00 (kg)	326062	

B10-M: 12-13

B10: VI-VII



Ⓜ = Metric (mm)

⚠ WARNING Exceeding weight capacity for machine tool spindle and tool changer can cause machine damage and/or serious injury. To prevent:
 -Consult machine tool builder for machine's weight limitations.
 -Refer to example on page B10-M: 11 for calculating tool assembly weight
 Factory technical assistance is also available for specific applications through our Application Engineering department. *email: engineering.eu@alliedmachine.com*

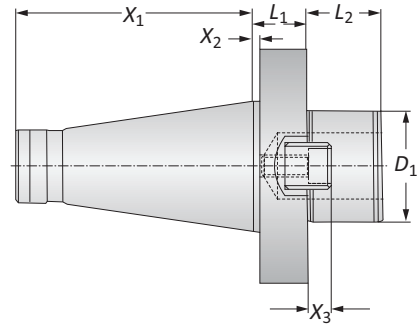
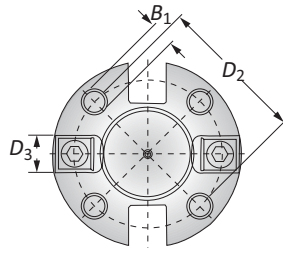
⚠ WARNING Tool failure can cause serious injury. To prevent:
 -Do not exceed recommended 10xD length-to-diameter ratio or exceed 4 total components (including shank)
 -When using Alu-Line® components, do not exceed recommended 5xD length-to-diameter ratio
 -When using tool steel components, do not exceed recommended 6xD length-to-diameter ratio
 -When using heavy metal components, do not exceed recommended 8xD length-to-diameter ratio
 -When using a carbide shank, do not exceed recommended 9xD length-to-diameter ratio
 -When using a NOVI^{TECH} module, do not exceed recommended 10xD length-to-diameter ratio
 -Refer to examples on pages B10-M: 8-10 for calculating length-to-diameter ratio
 Factory technical assistance is available for your specific applications through our Application Engineering department. *email: engineering.eu@alliedmachine.com*

A
B
C
D
E
F
G
H
I
J
K
L
M
INDEX



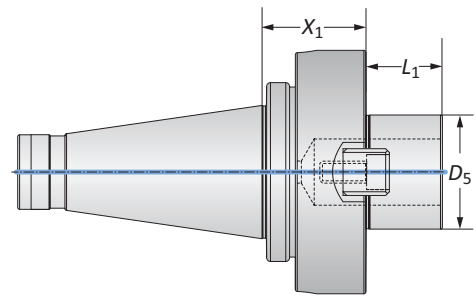
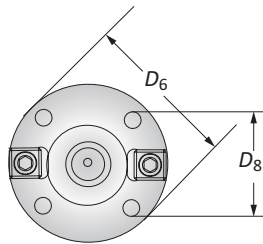
Master Shanks D 60

NMTB Shanks | DIN 2080 Shanks



NMTB Shanks

Taper Size	Connection	Shank									Weight	Part No.
		X_1	X_2	L_1	L_2	D_1	X_3	D_2	D_3	B_1		
mm 50	D 60	126.80	3.20	29.00	40.00	60.00	12.50	101.60	25.40	M16	8.00 (kg)	198051T004480



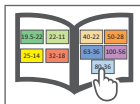
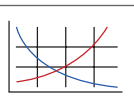
DIN 2080 Shanks

Taper Size	Connection	Shank						Weight	Part No.
		X_1	L_1	D_5	D_6	D_8	B_1		
mm 50	D 60	55.00	40.00	60.00	128.00	101.60	-	6.80 (kg)	326035

B10-M: 12-13

B10: VI-VII

Key on B10-G: 1



mm = Metric (mm)

WARNING Exceeding weight capacity for machine tool spindle and tool changer can cause machine damage and/or serious injury. To prevent:

- Consult machine tool builder for machine's weight limitations.
- Refer to example on page B10-M: 11 for calculating tool assembly weight

Factory technical assistance is also available for specific applications through our Application Engineering department. *email: engineering.eu@alliedmachine.com*

WARNING Tool failure can cause serious injury. To prevent:

- Do not exceed recommended 10xD length-to-diameter ratio or exceed 4 total components (including shank)
- When using Alu-Line® components, do not exceed recommended 5xD length-to-diameter ratio
- When using tool steel components, do not exceed recommended 6xD length-to-diameter ratio
- When using heavy metal components, do not exceed recommended 8xD length-to-diameter ratio
- When using a carbide shank, do not exceed recommended 9xD length-to-diameter ratio
- When using a NOVITECH™ module, do not exceed recommended 10xD length-to-diameter ratio
- Refer to examples on pages B10-M: 8-10 for calculating length-to-diameter ratio

Factory technical assistance is available for your specific applications through our Application Engineering department. *email: engineering.eu@alliedmachine.com*