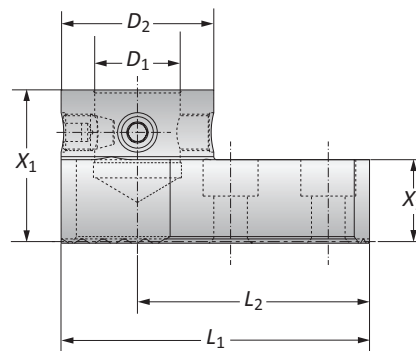


## Serrated Adapter with MVS Connection

### Mounting Adapter

| MVS Connection | Mounting Adapters |       |        |       | Weight    | Part No. |
|----------------|-------------------|-------|--------|-------|-----------|----------|
|                | $D_2$   $D_1$     | $X_1$ | $X_2$  | $L_1$ |           |          |
| 50 - 28        | 50.00             | 27.00 | 101.00 | 76.00 | 1.30 (kg) | 349046   |



### Inside Boring

| Slide              | Boring Heads         | ID Bore Range<br>mm |
|--------------------|----------------------|---------------------|
| 349051             | 310005/464006/564045 | 215.00 - 313.00     |
| 349052             | 310005/464006/564045 | 290.00 - 388.00     |
| 349053             | 310005/464006/564045 | 365.00 - 463.00     |
| 349054             | 310005/464006/564045 | 440.00 - 538.00     |
| 349005 with 349015 | 310005/464006/564045 | 480.00 - 778.00     |

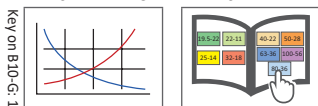
### Outside Boring

| Slide              | Boring Heads         | OD Bore Range<br>mm |
|--------------------|----------------------|---------------------|
| 349051             | 310005/464006/565045 | 67.00 - 165.00      |
| 349052             | 310005/464006/565045 | 142.00 - 240.00     |
| 349053             | 310005/464006/565045 | 217.00 - 315.00     |
| 349054             | 310005/464006/565045 | 292.00 - 390.00     |
| 349005 with 349015 | 310005/464006/565045 | 332.00 - 630.00     |

NOTE: LH only spindle rotation

B10-M: 12-13

B10: VI-VII



= Metric (mm)

**WARNING** Exceeding weight capacity for machine tool spindle and tool changer can cause machine damage and/or serious injury. To prevent:

- Consult machine tool builder for machine's weight limitations.
- Refer to example on page B10-M: 11 for calculating tool assembly weight
- Factory technical assistance is also available for specific applications through our Application Engineering department. *email: engineering.eu@alliedmachine.com*

**WARNING** Tool failure can cause serious injury. To prevent:

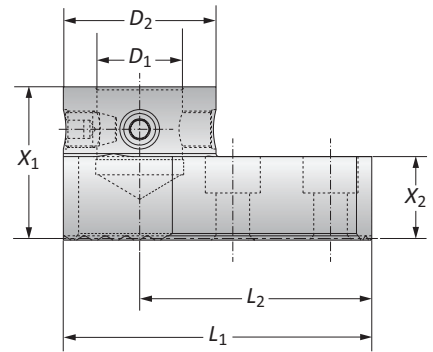
- Do not exceed recommended 10xD length-to-diameter ratio or exceed 4 total components (including shank)
- When using Alu-Line® components, do not exceed recommended 5xD length-to-diameter ratio
- When using tool steel components, do not exceed recommended 6xD length-to-diameter ratio
- When using heavy metal components, do not exceed recommended 8xD length-to-diameter ratio
- When using a carbide shank, do not exceed recommended 9xD length-to-diameter ratio
- When using a NOVITECH module, do not exceed recommended 10xD length-to-diameter ratio
- Refer to examples on pages B10-M: 8-10 for calculating length-to-diameter ratio
- Factory technical assistance is available for your specific applications through our Application Engineering department. *email: engineering.eu@alliedmachine.com*



## Serrated Adapter with MVS Connection

### Mounting Adapter

| MVS Connection | Mounting Adapters               |                |                |                | Weight    | Part No. |
|----------------|---------------------------------|----------------|----------------|----------------|-----------|----------|
|                | D <sub>2</sub>   D <sub>1</sub> | X <sub>1</sub> | X <sub>2</sub> | L <sub>1</sub> |           |          |
| 50 - 28        | 50.00                           | 27.00          | 101.00         | 76.00          | 1.30 (kg) | 349046   |



### Inside Boring

| Slide              | Boring Heads         | ID Bore Range<br>mm |
|--------------------|----------------------|---------------------|
| 349051             | 310005/464006/564045 | 65.00 - 128.00      |
| 349052             | 310005/464006/564045 | 105.00 - 203.00     |
| 349053             | 310005/464006/564045 | 180.00 - 278.00     |
| 349054             | 310005/464006/564045 | 255.00 - 353.00     |
| 349005 with 349015 | 310005/464006/564045 | 295.00 - 593.00     |

### Outside Boring

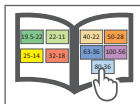
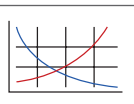
| Slide              | Boring Heads         | OD Bore Range<br>mm |
|--------------------|----------------------|---------------------|
| 349051             | 310005/464006/564045 | -                   |
| 349052             | 310005/464006/564045 | 0.00 - 55.00        |
| 349053             | 310005/464006/564045 | 32.00 - 130.00      |
| 349054             | 310005/464006/564045 | 107.00 - 205.00     |
| 349005 with 349015 | 310005/464006/564045 | 147.00 - 445.00     |

NOTE: LH only spindle rotation

B10-M: 12-13

B10: VI-VII

Key on B10-G: 1



= Metric (mm)

**WARNING** Exceeding weight capacity for machine tool spindle and tool changer can cause machine damage and/or serious injury. To prevent:

-Consult machine tool builder for machine's weight limitations.

-Refer to example on page B10-M: 11 for calculating tool assembly weight

Factory technical assistance is also available for specific applications through our Application Engineering department. *email: engineering.eu@alliedmachine.com*

**WARNING** Tool failure can cause serious injury. To prevent:

-Do not exceed recommended 10xD length-to-diameter ratio or exceed 4 total components (including shank)

-When using Alu-Line® components, do not exceed recommended 5xD length-to-diameter ratio

-When using tool steel components, do not exceed recommended 6xD length-to-diameter ratio

-When using heavy metal components, do not exceed recommended 8xD length-to-diameter ratio

-When using a carbide shank, do not exceed recommended 9xD length-to-diameter ratio

-When using a NOVITECH module, do not exceed recommended 10xD length-to-diameter ratio

-Refer to examples on pages B10-M: 8-10 for calculating length-to-diameter ratio

Factory technical assistance is available for your specific applications through our Application Engineering department. *email: engineering.eu@alliedmachine.com*